

Fun with stamps #129

Name _____

Time _____

Hocus-Pocus
Part XII

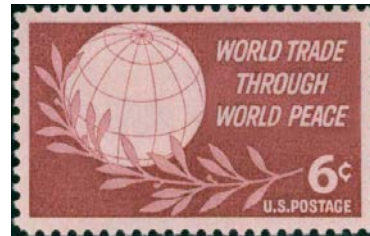
A



B



C



D



Name 8 things wrong with these stamps. (16 points total)

Which stamp is it?

Answers

+++++

- (1) One of the Panama Canal Locks is pictured on “A” True False (1 pt)
- (2) There were a total of 8 values in the Pan-American Series. True False (1 pt)
- (3) Betsy Ross was a totally fictional character. True False (1 pt)
- (4) The longest period of stable first class letter rates was the 3^c era from July 6, 1932 to July 30, 1958. True False (1 pt)
- (5) The 38^c first class letter rate was one of the shortest rate periods ever – lasting only 3 days. True False (1 pt)