

# Postal Card Quiz

Name: \_\_\_\_\_

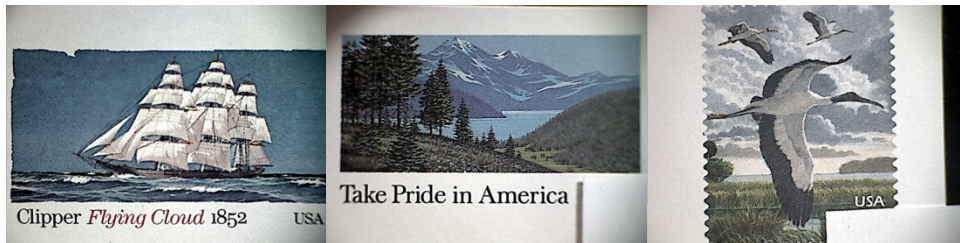
Time: \_\_\_\_\_



A

B

C



D

E

F

Assign the correct face denomination to the correct postal card (2 points each)

4	
6	
14	
39	
40	

1 point for each correct answer (questions pertain to postal cards issued by the United States Postal Department – not private issued or foreign countries) – circle T for true or F for false:

- In 1873 the **first postal** card was issued. T F
- In 1893 the **first paid reply card** was issued. T F
- In 1929 the **first airmail postal card** was issued. T F
- In 1958 a special card was issued for the use of the Westinghouse Corporation who then printed advertisements on the back and sent them to customers. T F
- Catalogue number (Scott) UXC28 was assigned to the **last airmail postal** card. T F
- The next catalogue number (Scott) to be assigned to a postal card will be over 600. T F
- According to 2014 Scott Catalogue, except for one issue, a used copy of an **airmail postal card** is worth more than a mint card. T F
- The first **booklet type set of postal cards** was the Legends of the West. T F
- The first set of **postal cards sold in sheets of 4** were the Love (swans) sheet. T F
- The **Postal Buddy Computer Vended** postal cards were sold in sheets of 4. T F
- The **official postal cards** issued from 1983 to 1995 (UZ2 thru UZ6) have used catalogue values **over 100 times** the mint value according to the 2014 Scott Specialized. T F
- Since 2002 **all** postal cards are sold for more than their face value. T F