

Remembering The Winter Park Stamp Shop

Jason Wells

I've collected stamps since childhood and I was in and out of the Winter Park Stamp Shop from around 1980 to the early 2000s. I ran into it by accident. While riding with my parents and grandmother, I looked to my right at the stoplight at either Webster & Park or Canton & Park and there it was. I thought stamps and stamp supplies were available only at kiosks in department stores and approvals from big stamp companies.

The following Saturday, my parents and I struck a bargain. Do cleanup work at my grandmother's house for a few hours in the morning and in the afternoon, instead of shopping with the family, they would drop me off at WSS while they went to the old Winter Park Mall. For an adolescent boy, it was a slice of independence and I spent 5+ hours sorting through the nickel-stamp basket. Time passed so quickly that day that I tried to go back as often as possible. It was one of my fondest memories. Unfortunately, when I became a young adult I drifted from stamp collecting.

Around 1997, I got back to stamp collecting because it was a solitary pursuit that provided an escape from a high stress job. I found that the shop moved to Welbourne St. off of Park Avenue, but nothing else changed. It was at this point that I discovered the joy of buying old collections. For \$10-\$300+ I bought old albums featuring who knows what. When the shop moved to Orlando Avenue, I only came intermittently for a long while because of work and life issues. Also -- because I poured all my resources into printing albums for all the countries in the world.



Once I was back to purchasing stamps, the shop was closed. The shop in Kissimmee (A & R Stamp & Coin) closed soon after. From that point on, stamp purchases were done either at local shows or through eBay. I'm told that the only brick and mortar stamp shop in Florida is in Ormond Beach. It's not quite the "Last of the Blockbusters", but the landscape for purchasing stamps has certainly changed. Regardless, I miss the WSS.

[Editor's note. The Winter Park Stamp Shop was owned by longtime CFSC member Michael Rogers and in the early fall of 2007 the store front closed. The auction side of the business (pictured above) was open until the fall of 2014 when it was sold to Daniel F. Kelleher Auctions, LLC of Danbury, CT. Michael's visibility in the community afforded him a unique position of being able to support the CFSC both directly and indirectly. Many of his employees both at the auction house and at the store front have been members of the club. There are simply too many names to list. Michael and his staff routinely referred their clients to the CFSC for either membership or the selling of small collections. The impact on the CFSC was tremendous with the almost constant flow of material and new members. The CFSC will be forever indebted to Michael and his staff. The closing of the auction house in the early fall of 2014 was the end of an era in the Central Florida area.]

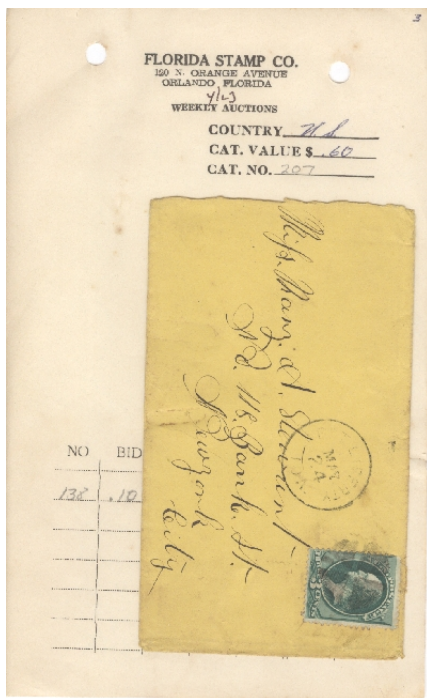
Remembering A & R Stamp & Coin



The store front in Kissimmee was originally opened with the partnership of Bill Anderson and Earl T. Reeder in 1982. In 1984 Bill Anderson left the partnership and Ann was hired to run the store as Earl was still working full time. In 1985 Ann Fettig became a partner in the business and it remained that way until early 2001 when Ann became the sole owner operator of the store front. The store did a very respectable business until the closing in July of 2008, when Ann retired from the daily grind. The picture shown was taken inside the store when the USPS gave her a Certificate of Appreciation, a T-Shirt and \$2,500 for helping capture one of the Postal Inspector's top 10 Most Wanted. While Kissimmee is a fair distance from the Orlando area, A & R supported the CFSC with

referrals and donations countless times over the years. More over Phil and Ann Fettig have been long-time members of the CFSC. Ann and Phil also have been long-time booth holders at local shows, medium or large.

Remembering Other Store Fronts



I have only the vaguest of memory of this store front. The Florida Stamp Co. was located in what was the Orange Quarter complex, sometime in the late 1970s. Information seems to indicate that FSC existed from the mid-1950s to 1982.

Another store front that existed for a short time was American Stamps run by the late Jim White (2003) who had been an employee of Michael Rogers. There was an unnamed financial backer involved. The store front was located in the Collage Park area on Edgewater Drive north of Par Avenue and south of Lee Road in a strip mall on the west side; it failed to thrive and closed within a couple of years.

Other stores that folks have memory of include:

- (1) Morton & Moffitt, late 1960 in the Casselberry area.
- (2) John McDaniel, early 1970s to mid 1980s, in downtown Orlando and Park Ave in Winter Park.
- (3) A store located in the Rodeo Mall on west Colonial Drive.
- (4) A store located on east Colonial about 3-4 miles east of 436 (mid 1970s to early 1980s)
- (5) Joseph Treadway Kiosk in the Altamonte Mall, late 1970s.
- (6) Colonial Photo & Hobby, stamp packets, late 1970 to early 1980s. The store is still there and operational.
- (7) Charlie Slade Collectables Store (Winter Park Mall), early 1980s.
- (8) A&R Stamp & Coin, Kissimmee, 1982 to 2008.
- (9) Karl Franz Stamp Store, Mills (north of Colonial), early 1980s.

If anyone has any further information on these store fronts, please contact the Editor as we would like to establish a section of the Club's website dedicated to store fronts that have been in the Orlando and environs.