



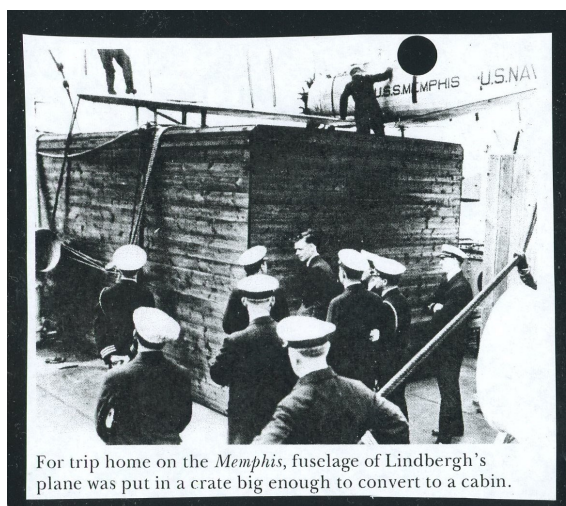
#699  
August 1968



## The Cover Story

So, How Did Lindbergh Get Home from Paris in 1927?

Figure A3



For trip home on the *Memphis*, fuselage of Lindbergh's plane was put in a crate big enough to convert to a cabin.

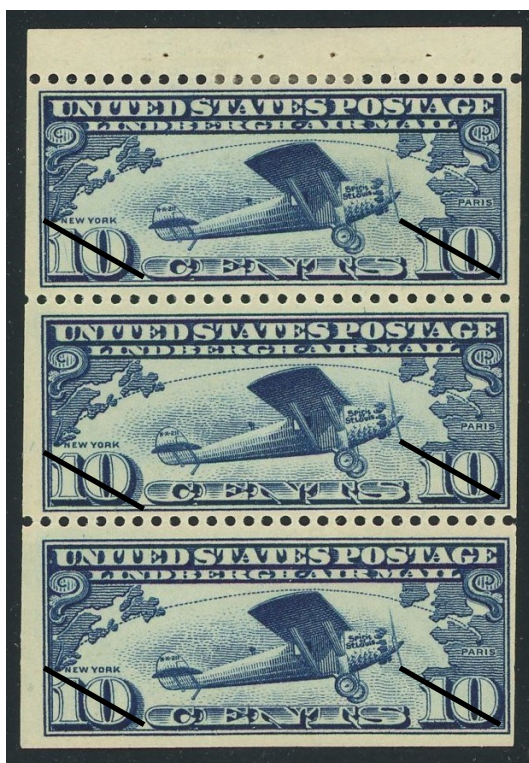


Figure A1

Figure A2



## Program Schedule (Jul/Aug/Sept)

All philatelic activity of the CFSC has been suspended in response to the COVID-19 pandemic. A review of circumstances will be made at the end of July. There will be Zoom meetings for the foreseeable future. E-mail notices will go out a couple of days before the meeting date. Come see your fellow club members!

**BoD meeting for 2020; 07.30 & 10.29.**

## June Meeting Recaps

No meeting occurred.

## Dinner Plans

No meetings for July and no dinner gatherings.

## \*\*\* Writers Needed \*\*\*

In an effort to keep the newsletter “plumb” during this time of no in-person meetings, we continue to need material. Please consider sending a general interest article for use.

## Event Calendar 2020

CFSC Summer One Day July 11 (cancelled)

FSDA Fall One Day Show September 12

FLOREX 2020 December 4-5-6

For more info: [www.FloridaStampShows.com](http://www.FloridaStampShows.com)

## New Member X 2

Jim Moore & his daughter Allison Moore from Winter Springs have joined us. Jim collects World Wide, Latin America, South America and Malaya & states, while Allison collects World Wide and French Colonies. Welcome to the CFSC, The current roster stands at 106.

## After Glow — July

No sessions scheduled.

## Quoted

*“It matters not who you love, where you love, why you love, when you love or how you love, it matter only that you love.”*

John Lennon

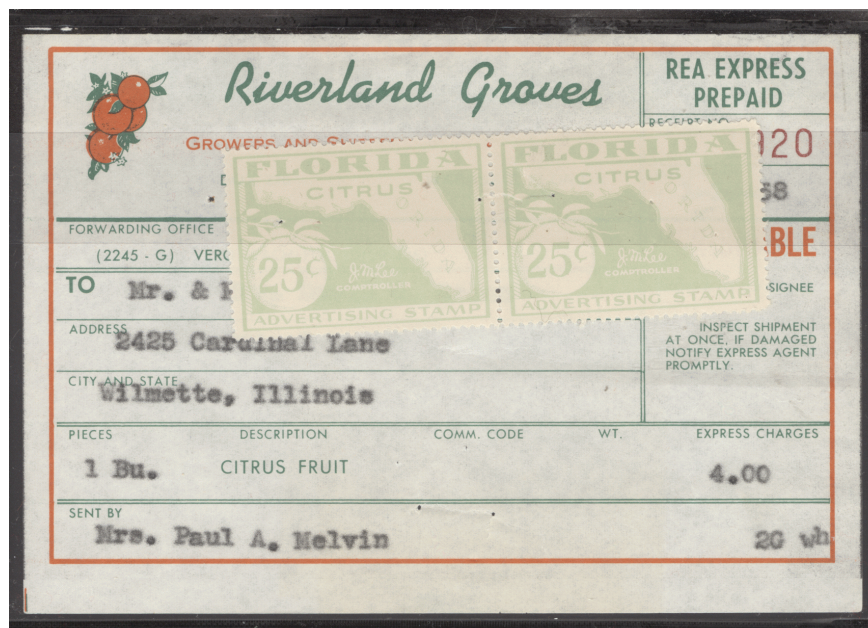
[1940 — 1980]

Member of the Beatles  
& Youth Stamp Collector



## Citrus Revenue — Twenty-Five Years Late

This little gem showed up on eBay recently for a reasonable sum of close to four sawbucks. You may ask —what makes it special? This sales ticket measures 3.75 by 5.5 inches and shows evidence of rouletting on the top edge — so it came out of a pad of some nature. The date on the slip (partially covered by the right most stamp is January 19, 1968. This piece of ephemera is most unusual when you realize that there is no good reason for the use of the two twenty-five cent citrus advertising stamps. The use is at least 25 years out of date for common usage. Why are they even on this sales slip going to Illinois? That is simply a question that there is no good answer for. A best guess is the two stamps were applied to “dress up” the sales slip and make it look more official.



The population of citrus related revenue stamps available to the collecting community in the year 2020 is tiny. When you add into the mix finding uses on revenue paper, such as this sales slip — the number becomes infinitesimally small.

An attempt to locate more information on Riverland Groves in Wabasso, FL turned up nothing of note. Wabasso is located about 4 miles north of Vero Beach.

Remember that these types of usage tended to be around a very short time, as they served the purpose as intended and then found their way to the waste bin.

[Item provided by S. L. Strobel]



## President's Message by A. Stephen Patrick

Another month of Covid – 19 has passed and June, 2020, is history. What did it mean for the Central Florida Stamp Club? First, we had two excellent Zoom meetings on line that drew about 24 of our members to each presentation. With over 100 members, where were the rest of you?

Second, Mel Borofsky has kept our weekly bourse open and members are active in buying and selling. Jim Archbold, Phil Fettig, John Latter, among others have made special offers. Make sure you check each week and maybe add your items for sale.

Third, Francis Ferguson continues to produce an excellent newsletter. Of course this wouldn't happen without you club members providing articles. Remember you can go to our website and read all our past entries and in color.

Fourth, our treasury is stable since we have fewer expenses and no rent to pay at the Marks Center. On that note, I don't expect to have a regular in person meeting in the month of July. Orange County has still not "flattened the curve," and too many of our members are at risk and can not attend.

On the other hand, the West Volusia Stamp Club had a regular meeting Tuesday, June 16. They have a large space in a municipal building in Deland and only 10 members attended making it easier for social distancing. Fergie says that our one day show in September is still on the calendar. That may be our first test.

I was planning to attend the ANA's World's Fair of Money in Pittsburg on August 4 to 7, but as of June 15, it has been postponed. Pennsylvania's COVID-19 rules made the large show an impossibility. They are now talking about a later date in another state. Last Saturday there was a 20 dealer coin show in Atlanta, so some are trying to come back.

Fifth, our club still gets inquiries through our web site. We thank Sebastian Lavar of Key Biscayne for a fat package of stamps in the mail. He donated his childhood collection and wanted it to have a good home. We will see that it does.

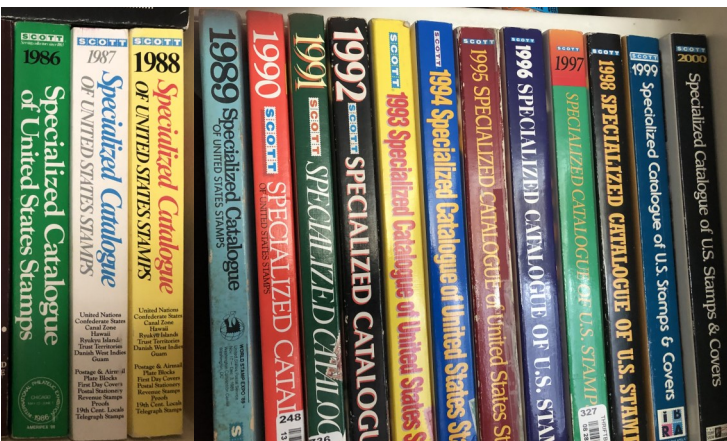
Sixth, and last, is the good news of two new members. We welcome Jim and Allison Moore, numbers #739 and #740 who are relocating from the north to Winter Springs and will join us in the early Fall.

Keep networking, but wear your masks, wash your hands, and do social distancing. Our stamp collecting hobby is still one of the best activities for times like these, but it helps to have friends to share them with like you, my fellow club members.



## The Editor's Box — 1986 to 2000 = 15.75 Inches

As the social distancing of our era continues to impact my life — and everyone else, I am pecking away at slowly organizing my reference library. Recently I realized that I had no way to research stamp prices as they went through the ups/downs of what happened in the late 1980s and early 1990s. So off to eBay I went to find the Scott's Specialized Catalogs from 1986 to 2000. It did not take long to find all of the volumes needed, of course the condition varied considerably, however I did make an effort to buy the least abused volumes possible. Most were purchased for \$4 to \$12; needless to say I avoided the volumes that for some reason the seller was selling for \$40 and more. There was no rational reason for that price in my mind.



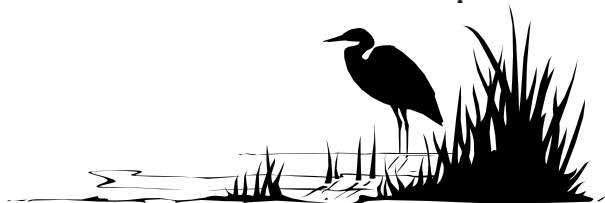
Now I have a complete set of Scott's Specialized Catalogs from 1923 to 2000. This is a wealth of information at my finger tips when needed.

I may live to regret this in 4 years when we have to pack up this house, as we downsize. The combined weight of all these volumes is considerable! Until then I will enjoy the access to information on my reference shelf.

**The Central Florida Stamp Club** is a 75+ year old organization governed by a Board of Directors elected by the general membership every two years and dedicated to the enjoyment of the hobby of stamp collecting.

- Membership is a reasonable \$25 per year, \$6 for youth.
- Meetings are twice a month on the first and third Thursdays.
- The Membership of the CFSC includes many diverse interests that cover the range from A-Z.
- The meeting is centrally located to downtown Orlando and can be easily accessed from SR 50 (Colonial Drive) and I/4.
- The Marks Street Senior Center has been our host for going on 25 years and provides a pleasant meeting room with easy access and plenty of free parking.
- The informal part of the meeting runs from 6:00-6:45. The business side of things from 6:45-7:00. Cried auction and/or presentation to start at 7:05 until 8:10 Followed by auction wrap up and informal discussions. We must be out of the building by 9:00 without exception.
- The Membership of the CFSC participates as the host and sponsor of the one day shows in January/February, April & June. In addition, we are the resident hosting club for FLOREX which is held in the Kissimmee area.
- The CFSC maintains a website: [CentralFloridaStampClub.org](http://CentralFloridaStampClub.org)
- Benefits of membership include; monthly newsletter, a monthly bourse buy/sell newsletter, access to loaner equipment & catalogs, participation in door prize drawings, the right to bid in cried/silent auctions — and much more.

## Central Florida Stamp Club



**NOTE:** Opinions expressed in this newsletter are solely those of the authors placing articles, and are not reflective of the CFSC or any members.

**The Editor of this newsletter, Francis Ferguson**  
can be reached at 407.493.0956 (Cell) or E-mail address  
[Editor@CentralFloridaStampClub.org](mailto:Editor@CentralFloridaStampClub.org)

### CFSC Officers (2020/2022)

President	A. Stephen Patrick
VP-Operations	Robert Fisher
VP-Programs	James Cooney
Treasurer	James Archbold
Secretary	Mel Borofsky
Director-at-Large	Rick Cohen
Director-at-Large	Carlos Guffain
Director-at-Large	Gene Perry
Director-at-Large	Mike Schumacher