



#699  
August 1968



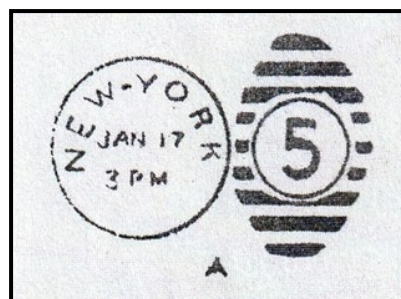
## The Cover Story

### New York Circular Date Stamp Cancels & Barred Ellipse Oval Killers (AKA - New York Duplex Cancels)

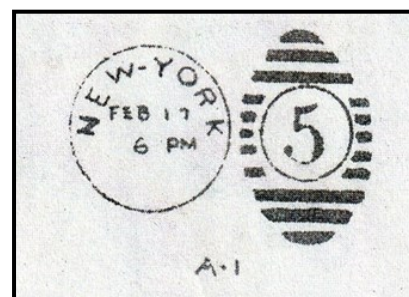


- <<< Cancel ID variety AA
- Hyphen in New York
  - station letter at foot of CDS
  - no year date
  - 9-bar horizontal killer

- Cancel ID variety A >>>
- Hyphen in New York
  - no station letter at foot of CDS
  - no year date
  - 9-bar horizontal killer



- Cancel ID variety A-1 >>>
- Hyphen in New York
  - no station letter at foot of CDS
  - no year date
  - 11-bar horizontal killer



## Program Schedule

**Mar. 1st meeting**—Member discussion “What will Become of Your Collection at the End of the Day?”

**2nd meeting**— Mike Schumacher presenting on “Philatelic Look at the 1972 World Chess Championship”

**Apr. 1st meeting**— called auction

**2nd meeting**— Mike Smith presenting on “FLOREX exhibit Scott 11a Yellow Colored Cancel from Placerville, CA”

**Board meeting for March 30, 2022;**  
**Mike Schumacher will notify board members.**

## February Meetings Recap

The first meeting had 28 folks attending, with 9 for dinner. Gerald Fresinger won the \$10 door prize & Henry Jehan won a gift certificate for the Maitland Stamp Show. A called auction was conducted. The second meeting had 32 folks in attendance, with 8 who met for dinner, Gene Perry won the \$10 door prize — James Auffant did a wonderful presentation on the George Boutwell Revenue Stamps. A total of 19 items sold in the silent auction for a total of \$180.50.

**Thank you CFSC members who volunteered and worked the February Maitland Stamp show!**

## Stamp Show Schedule 2022

CFSC Spring One Day	April 2	Maitland
CFSC Summer One Day	June 4	Maitland
FSDA Autumn One Day	Sept. 10	Maitland
FLOREX 2022	December 2 - 3	Kissimmee

For more info: [www.FloridaStampShows.com](http://www.FloridaStampShows.com)

## New Members

CFSC Membership continues to grow! Welcome!

#748 Alan Bennett	#749 Brian Thomas
#750 John Busowski	#751 Ed Sherman
#752 Glenn Whiting	#753 Scott Marz
#754 Ann Wood	#755 Fred Bohl
#756 David Olson	

We are glad you have joined CFSC and looking forward to learning more about you and your collecting interests and having you participate in the club!

## After Glow — Information

After Glow sessions are on hiatus for the immediate future.

## Dinner Plans

There are plans to meet at 4:30pm at the Chuan Lu garden at 1101 E. Colonial Drive. Located on the North side of Colonial Drive one block west of Mills Ave. There is plenty of parking in the lot behind the restaurant. Lots of dinner specials on the menu and lots of informal stamp discussion amongst members.

## Quoted

*“Life’s most persistent and urgent question is, “What are you doing for others?”*

*Martin Luther King Jr.*



Volunteer - A little help goes a long way!

## The Editor’s Box

**Opportunities a Plenty @ CFSC! It’s not too late!**

Opportunities available for members to participate in club activities. Currently there is a need for:

- |                                                                                             |                                          |
|---------------------------------------------------------------------------------------------|------------------------------------------|
| 1. <b>Members to write newsletter articles</b>                                              | 2. be the <b>Newsletter Editor</b>       |
| 3. Members to do a meeting presentation                                                     | 4. Staff the reception table at meetings |
| 5. Staff the reception table at stamp shows                                                 | 5. be the <b>FLOREX Exhibit Chair</b>    |
| 6. Fill other FLOREX positions: <b>Reception Chair; Event Coordinator; Youth Table etc.</b> |                                          |

To get involved contact Mike Schumacher at [schumacher5154@comcast.net](mailto:schumacher5154@comcast.net)

## President's Message by Mike Schumacher

As I sit here in cold snowy Minnesota, it is good to see that slowly but surely things are beginning to return to a more “new normal” active lifestyle. Hopefully the covid pandemic will soon be a thing of the past. Attendance at club meetings and stamp shows is increasing and Mike Smith has been busy filling up the CFSC meeting program schedule.

**Thanks** to all of the CFSC members who attended and volunteered at the February Maitland Stamp Show! It seemed like a good time was being had by all those in attendance. I know I got to spend a bit more time talking with CFSC members and dealers getting to know them and their collecting areas of interest. Hopefully you were also able to get to know other CFSC members and dealers better as well, as you searched for those philatelic items to add to your collection. **The next Maitland Stamp show will be on April 2nd!** Hope to see you all there again!



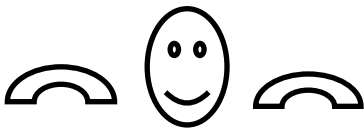
The CFSC Spring Picnic - April 3rd at the Maitland Community Park, Pavilion # 2 from 2pm—6pm. Thanks to Gene Perry, Roy Anderson & Stephen Patrick for organizing the event. Looking forward to seeing everyone at the picnic. Food, friends and fun!

Burgers & Hot Dogs will be provided. Bring a dish to share.

May you all have a wonderful, healthy and safe 2022 as you pursue your philatelic interests!

**Mike S.**

**CFSC President**



**Looking to clear out some of the accumulation or pick up some stamp bargains!**

**Reminder of upcoming event:**

**West Volusia Stamp Club - Stamp Collectors Garage Sale**

**Tuesday April 5, 2022 1:30 to 3:30pm**

**Sanborn Activity and Event Center**

**Earl Brown Park 815 S. Alabama Ave. Deland, FL**

**Opportunity for members of area clubs to sell their duplicate stamps, covers, etc.**

**Admission is free**

**Table fee is \$5.00**

**For more information contact**

**Mike Daley**

**407.417.7818**

**miked129e@gmail.com or [www.floridacsp.com/wvstamp/](http://www.floridacsp.com/wvstamp/)**

## Cover Story cont. New York Duplex Cancels

Josh Furman

Early cancels were one means of stopping further use of a postage stamp. After all, when one paid for a postage stamp one paid for its use to send mail. It was illegal to use the same stamp more than one time. A cancel is any marking that shows a stamp has been used.

As the Postal Service grew, it wanted to know more details about how the mail was handled, so a CDS (Circular Date Stamp) was added to the cancel mechanism. With a CDS in use, one could tell when the mail was posted, so the recipient could tell how long mail service was taking.

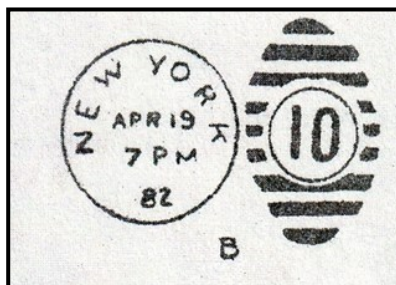
That wasn't sufficient. As I understand it, the Postmaster also wanted to know who did the canceling, so he could better oversee the work performed at his post office. So a number was added to the killer. The two parts had one handle. The entire cancel now had a CDS and a killer made up of a barred oval with a center circle in which a number could be displayed. Hence a Duplex Cancel. A duplex cancel is one that consists of two components, placed side by side. Usually on the left, there will be a circular date stamp (CDS), and then there will be a barred oval killer on the right. Duplex cancels have been around since the 1850's and postal regulations, at the time they were introduced, generally required the postmaster to apply the handstamp in such a way that the killer would fall on the stamp, and then the circular date stamp would fall onto the letter, where it could be read easily by the postal clerks.

As a born New Yorker, I decided to specialize in the Duplex Cancels from my city, starting with those with numbers. I was able to find cancels with numbers from 1 to 52 in the circle inside the barred oval.

As the postal service in New York expanded, letters represented the Post Office Stations that were created and the numbers were discontinued. Letters A through Z were utilized to signify the station where the mail was posted or brought in from mail deliverers or post boxes around town.

As you can imagine, manufacturers jumped on the opportunity to supply the Postal Service with these Duplex Cancels. You can also understand that varieties were created in the amount of information contained in these cancels and in the placement of this information.

Some years ago, Arthur Bond, a philatelist from Casselberry, Florida, wrote a four-section document attempting to describe the various New York cancels that he found. As my accumulation of these cancels grew, I was able to add to his list and modify it to include all the duplex cancels I could find in my postal card collection. For starters, here are 16 different varieties of this cancel. (The first three are on the cover page.) There are more, depending on the size, font and positioning of the city name. Some of these, including the scarce Leavitt cancels will be discussed in a future article.

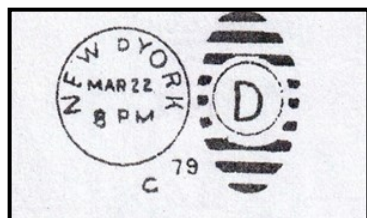


<<< Cancel ID variety **B**

- No Hyphen in New York
- year date at foot of CDS
- 11-bar horizontal killer

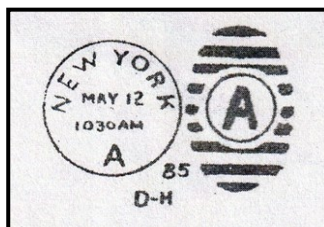


## New York Duplex Cancels cont.



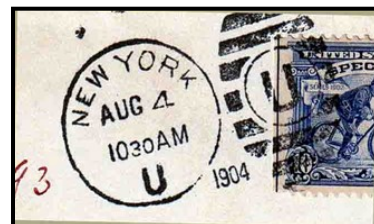
Cancel ID variety **C**

- Station letter between New & York
- year date between CDS & killer
- 9-bar horizontal killer



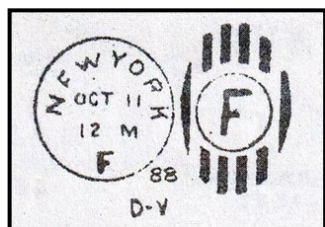
Cancel ID variety **D-H**

- No Hyphen in New York
- station letter at foot of CDS
- year date at foot of CDS
- 9-bar horizontal killer



Cancel ID variety **D-H-Y**

- same as D-H but with 4-digit year date



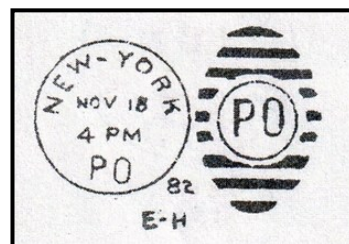
Cancel ID variety **D-Y**

- No Hyphen in New York
- station letter at foot of CDS
- year date between CDS & killer
- 6-bar vertical killer



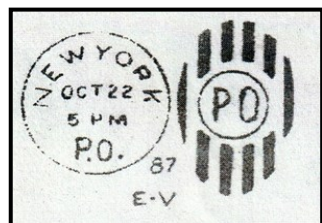
Cancel ID variety **D-V-Y**

- same as D-V but with 4-digit year date



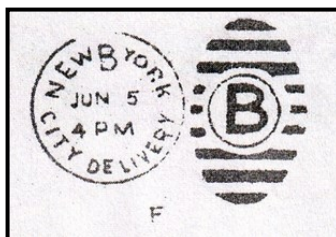
Cancel ID variety **E-H**

- Hyphen between New & York
- station letter at foot of CDS
- year date between CDS & killer
- 9-bar horizontal killer



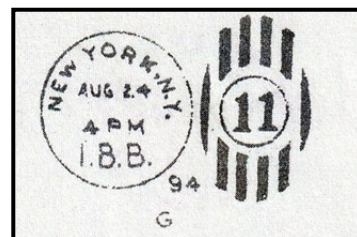
Cancel ID variety **E-V**

- No Hyphen in New & York
- station letter at foot of CDS
- year date between CDS & killer
- 6-bar vertical killer



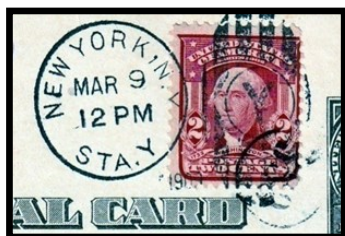
Cancel ID variety **F**

- Station letter between New & York
- "CITY DELIVERY" at foot of CDS
- no year date
- 9-bar horizontal killer



Cancel ID variety **G-V**

- Comma N.Y. after New York in CDS
- station letter at foot of CDS
- year date between CDS & killer
- 6-bar vertical killer



Cancel ID variety **G-I**

- Comma N.Y. after New York in CDS
- STA before Station letter @ foot of CDS
- 4 digit year date between CDS & killer
- 6-bar vertical killer



Cancel ID variety **G-H**

- Comma N.Y. after New York in CDS
- station letter at foot of CDS
- year date between CDS & killer
- 9-bar horizontal killer



Cancel ID variety **S**

- Star between New & York in CDS
- Station letter at foot of CDS
- year date (if any) & killer not visible in this example

## "The Match of the Century - A Philatelic Look"

By Mike Schumacher

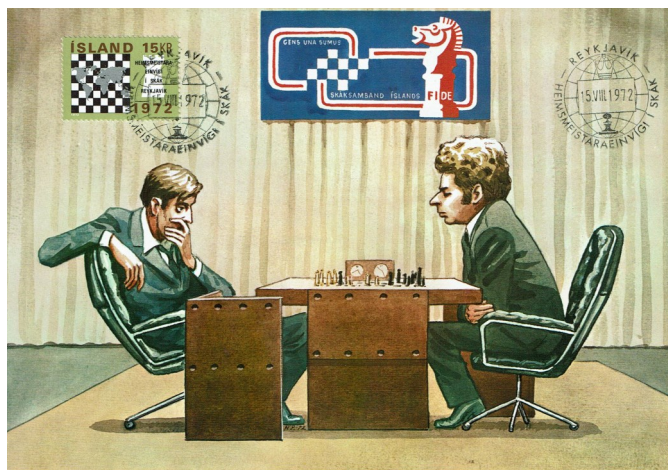
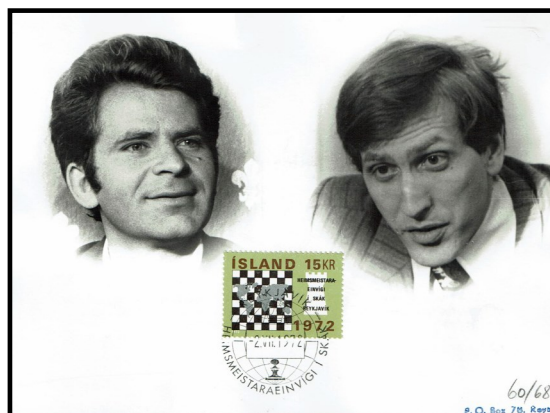
(A preview to the March 17th presentation)

In 1972 the World Chess Championship received the largest worldwide attention that it had ever experienced when the reigning champion Boris Spassky from Russia was set to take on the challenger Robert (Bobby) Fischer from the United States. The Russians had dominated the World Chess Championship Title for nearly 50 years. The event was held in Iceland when other countries withdrew from consideration. The event was organized by the Icelandic Chess Federation and held at Laugardalshöll stadium. The Icelandic Postal Administration created a stamp and special cancel for the match and a special Post Office was opened at the stadium on the days the games were in session.

The prize money was an unprecedented \$135,000. Fischer demanded more and felt that Chess players were athletes and should get paid like athletes in other sports, so he didn't show up for the opening ceremony. He only agreed to show up after James Slater an English businessman agreed to double the amount of the prize money.

Spassky

Fischer



To help pay the costs of hosting the World Chess Championship the Icelandic Chess Federation had 9 different cachet covers; 2 greeting cards; several postcards and a variety of medals and other souvenirs created to help raise funds. Other artists and stamp dealers also seized upon the opportunity to create cachet covers and postcards to have the Iceland 15kr chess stamp and special cancel placed upon them to sell. In total over 100 different cachets and 50 postcards were created for the match. Many of the cachets were printed in quantities of 10,000 each. Some were one-of-a-kind hand drawn cachets. (To learn more - see you at the March 17th meeting.)



### Great American Stamp Show Aug. 25-28, 2022

SAFE Credit Union Convention Center - Hall C-D

1400 J St, Sacramento, CA 95814

**We invite you to the 2022 Great American Stamp Show (GASS) in Sacramento, California!** The show is the nation's largest philatelic event featuring 75+ dealers selling stamps & covers, first day ceremonies, 900+ frames of philatelic exhibits and rarities, participation of at least 40 national specialty societies, a youth area, auction, and meetings and seminars. **Admission is FREE.**

**Where to Stay** - A hotel block has been arranged at:

**Sheraton Grand Sacramento Hotel**

1230 J Street, Sacramento, CA 95814

**Room Rates:** Single/Double occupancy \$150/night + local tax

**Reservation:** Call (916)447-1700 or (888)236-2427 Group Code: **GASS**



Upcoming CFSC 2022 Meeting Program Schedule  
(subject to change if necessary)

Mar 3 Member Discussion—"What Will Become of Your Collection at the End of the Day?" & Silent Auction

Mar. 17 Presentation: Philatelic Look at the 1972 World Chess Championship by Mike Schumacher & Silent Auction

Mar 31 Officer's Board Meeting

Apr. 2 CFSC Spring One Day Stamp Show—Maitland Civiv Center

Apr. 3 CFSC Spring Picnic—Maitland Community Park Pavilion # 2 (2-6pm)

Apr. 7 Called Auction

Apr 21 Presentation: Scott 11A Yellow Colored Cancel from Placerville, CA by Mike Smith & Silent Auction

May 5 Presentation: CFSC Website Tutorial by Fergie & David Allen; "Members Show & Tell" & Silent Auction

May 19 Presentation: First Day Canceled Souvenir Cards by Steve Patrick & Silent Auction

June 2 Called Auction

June 16 Presentation: Transportation Covers by John Catiller & Silent Auction

June 30 Officer's Board Meeting

July 7 Members Discussion—"How Did You Get Started Collecting Stamps?" & Silent Auction

July 21 Presentation: Finding Hidden Images with the USPS Stamp Decoder by Henry Jehan & Silent Auction

Aug. 4 Called Auction

Aug. 18 Presentation: Looking at World Events Through Navl Covers by Phil Fettig & Silent Auction

Sept. 1 Presentation TBA & Silent Auction

Sept. 10 FSDA Autumn One Day Stamp Show—Maitland Civic Center

Sept. 15 Presentation: Halloween Covers & Stamps" by Tom Lera \* Silent Auction

Sept. 29 Officer's Board Meeting

Full year schedule available on CFSC Website at <http://www.centralfloridastampclub.org>

**The Central Florida Stamp Club** is a 75+ year old organization governed by a Board of Directors elected by the general membership every two years and dedicated to the enjoyment of the hobby of stamp collecting.

- Membership is a reasonable \$25 per year, \$6 for youth.
- Meetings are twice a month on the first and third Thursdays.
- The Membership of the CFSC includes many diverse interests that cover the range from A-Z.
- The meeting is centrally located to downtown Orlando and can be easily accessed from SR 50 (Colonial Drive) and I/4.
- The Marks Street Senior Center has been our host for more than 25 years and provides a pleasant meeting room with easy access and plenty of free parking.
- The informal part of the meeting is prior to 6:00pm. The business side of things will be brief. Cried auction and/or presentation to start at 6:10 until 7:10 Followed by auction wrap up and informal discussions. We must be out of the building by 8:00 without exception. We may be able to return to pre-pandemic hours early in 2022.
- The Membership of the CFSC participates as the host and sponsor of the one day shows in January/February, April & June. In addition, we are the resident hosting club for FLOREX which is held in the Kissimmee area.
- The CFSC maintains a website: [CentralFloridaStampClub.org](http://CentralFloridaStampClub.org)
- Benefits of membership include; newsletter, access to loaner equipment & catalogs, participation in door prize drawings, the right to bid in cried/silent auctions — and much more.
- As of 02.2022

## Central Florida Stamp Club



**NOTE:** Opinions expressed in this newsletter are solely those of the authors placing articles, and are not reflective of the CFSC or any members.

**The Editor of this newsletter, Mike Schumacher can be reached at E-mail address [Editor@CentralFloridaStampClub.org](mailto:Editor@CentralFloridaStampClub.org)**

### CFSC Officers (2022/2024)

President	Mike Schumacher
VP-Operations	Carlos Guffain
VP-Programs	Mike Smith
Treasurer	Rick Cohen
Secretary	Mel Borofsky
Director-at-Large	Jim Cooney
Director-at-Large	Jerry Eller
Director-at-Large	Newt Kulp
Director-at-Large	A. Stephen Patrick