



#699  
August 1968



## The Cover Story

### U.S. Bureau Precancels

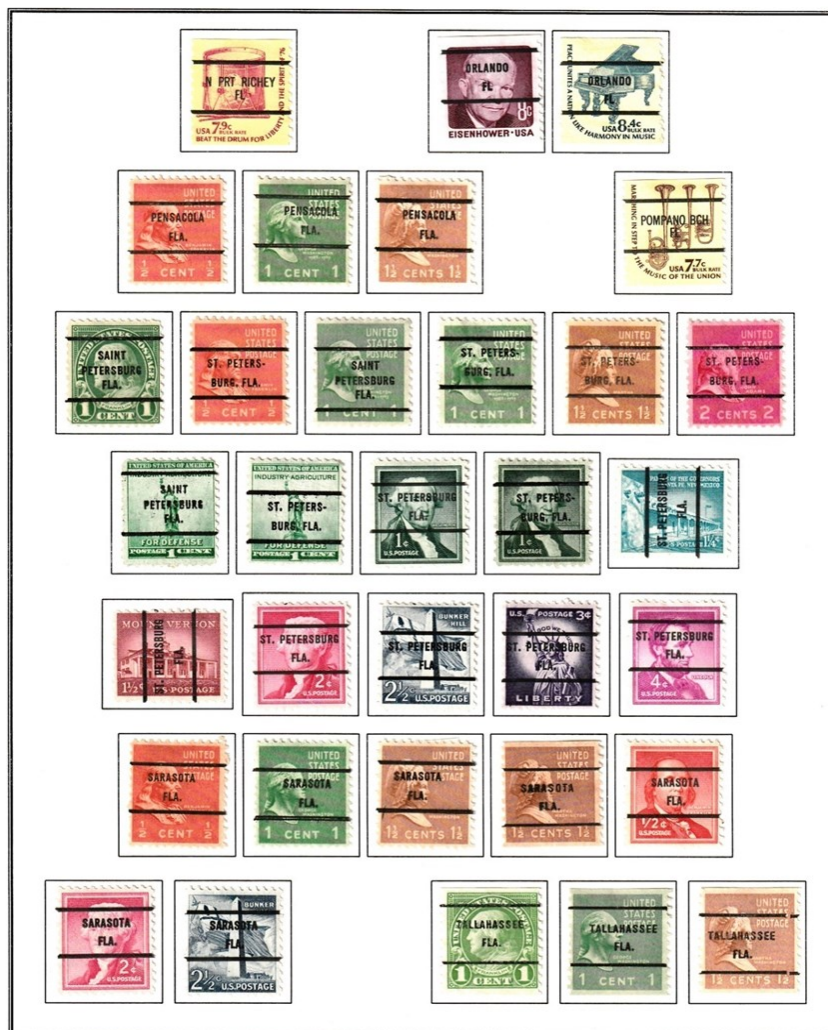


Figure 3  
Florida  
Precancels



## Program Schedule October and November

**\*\* New pre-meeting session: Before the first October club meeting. Our usual room is available for use from 2:00pm to 4:00pm for members to get together to do philatelic things! See page 6 for details.**

**October** (1<sup>st</sup> meeting) A Called auction will be conducted. **October** (2<sup>nd</sup> meeting) Tom Lera will do a presentation on "Halloween Covers and Stamps" followed by a silent auction.

**November** (1<sup>st</sup> meeting) A Called auction will be conducted.

## September Meetings Recap

First September meeting had 25 folks attending and 6 folks gathered for dinner. The door prize was won by James Auffant. Mike Smith did a presentation on "U.S. Classics Colored Cancel Extravaganza!" and a silent auction was conducted. Auction results: 10 lots sold; total sales \$245.00

Second September meeting had 20 folks in attendance and 2 who met for dinner. The door prize was won by David Allen. and a silent auction was conducted. Auction results: 13 lots sold for a total sales of \$373.50.

## Event Calendar 2022

**Club meeting Holiday Party December 15**

FLOREX 2022 December 2-3  
Volusia County Fairgrounds—Deland  
For more info: [www.FloridaStampShows.com](http://www.FloridaStampShows.com)

## Newest Members

**CFSC member # 757 is Jeff Small.**

Jeff is from the Orlando area and likes to collect US and Costa Rica stamps. Welcome Jeff!

**CFSC Member # 758 is Stan Martin** who likes to collect US pre 1930. Welcome Stan!

**CFSC Member # 759 is Jose Raul Martinez.** Welcome Raul!

## Dinner Plans

There are plans to meet at 4:30pm at the Chuan Lu Garden at 1101 E. Colonial Drive. Located on the north side of Colonial Drive one block west of Mills Ave. There is plenty of parking behind the restaurant. Bring your appetite – and topics for discussion.

## Quoted

*"I can't change the direction of the wind, but I can adjust my sails to always reach my destination."*

*Jimmy Dean*

(1928—2010) An American country singer, actor, television host and businessman. Famous hit in 1961 "Big Bad John". Hosted a variety of TV shows between 1957 and 1975 with a focus on country music. Founded the Jimmy Dean Sausage brand in 1969.

*Philately lets us all adjust our collecting interests as we strive to reach our collecting destination.*



## The Editor's Box



**"Opportunity is missed by most people because it is dressed in overalls and looks like work." Thomas Edison**

Get in on the opportunity and submit your articles. Let the CFSC newsletter reflect your philatelic knowledge and interests.

Submit articles to: [Editor@CentralFloridaStampClub.org](mailto:Editor@CentralFloridaStampClub.org)



**FLOREX 2022 is coming! December 2<sup>nd</sup> & 3<sup>rd</sup>.**

Volusia County Fair Grounds, Tommy Lawrence Arena, 3150 E. New York Ave. Deland, FL



Sponsored by the Florida Stamp Dealers Association and staffed by the Central Florida Stamp Club. Talk to Mike Smith or Mike Schumacher about how you can get involved and help out. Plenty of opportunities!

[www.FLOREXStampShow.com](http://www.FLOREXStampShow.com)



## President's Message by Mike Schumacher

First off, hopefully everyone made it through Hurricane Ian safely and with minimal if any impact!

A special delivery "Thank you" to all of the CFSC members who helped make the September 10th Maitland show a success! Aside from the usual suspects who assisted with set up/take down and staffing the registration table there was a new face learning the ropes—Jeff Small (one of our newest club members). Thanks, Jeff! There also appeared to be plenty of CFSC members in attendance shopping and checking out the dealers stock for new additions to their collections. Throughout the course of the day there were at least three youngsters in attendance who made good use of the Youth Table. Thanks to Mike Smith; Newt Kulp and Francis Ferguson for spending some time chatting with and helping these budding stamp collectors. These youngsters all went home with new knowledge and items to spark their collecting interests. Hopefully, we will see them around in the future!



No doubt you all saw the sad news in September regarding the passing of one of the world's most famous stamp collectors Queen Elizabeth II. May she rest in peace.



The Royal Philatelic Collection will once again have to be passed on to another family member. The collection was begun by Prince Alfred around 1864. He sold the collection to his brother Edward VII, who in turn passed it along to his son George V, the Duke of York. George V was elected honorary Vice-President of what became the Royal Philatelic Society of London. The Royal Philatelic Collection resides at Buckingham Palace. The value of the collection is estimated at 100 million euro. Now that is some serious stamp collecting and certainly reenforces the notation that it is important to make a plan for what happens to your collection when you die!



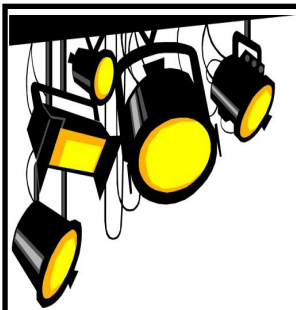
Spreading the news! Starting **October 6<sup>th</sup> from 2:00pm to 4:00pm** by popular request, CFSC will try out a "Pre-meeting" session for members to get together and spend some time socializing; using the club catalogs or other equipment; sorting stamps; preparing your auction items for the club meeting auctions, etc. The pre-meeting session will allow those who don't want to drive after dark to have time with club members, pursue their philatelic interests and still get home before dark. Members attending the session will determine what activities they will choose to do. See page 6 for further details.

Happy Halloween!!!

Trick or treat?



Yes, the chocolate bar is a sheet of stamps from Switzerland and it smells like chocolate!



## Member Spotlight - Daniel Wagenknecht

Daniel joined CFSC in July of 2021. His collecting interests include 19th Century U.S.; trains; clowns; Christian history and Fire/Rescue. Daniel has quickly involved himself in club activities and is learning the ropes on handling the computer process for our club auctions from David and David. Daniel, Thank you, for learning how to manage the auction computer program and stepping up to be a backup for David and David.

# Cover Story: U.S. Bureau Precancels

## Precancel Progress

by Josh Furman

I guess the first question is, “What is a precancel?”

The answer: It’s changed over the years. Read on.

When mail was canceled before it even got to the Post Office, the stamps on that mail were precanceled. The Postmaster, who was probably also the grocer, butcher, printer and purveyor of many other community services, would have been happy not to have had to cancel each of the same item in a mailing to the local population. So he sold the mailer stamps that he could identify as canceled, so as to not have to do the work himself. The identification might have been a sign or symbol, but mostly it was the name of the city (or town or village) and state of mailing set between two lines. It might have looked like Figure 1.

As you can imagine, printers in different towns might have used different styles of typesetting, different sizes of type, or different lengths or thickness of bars or lines. So there wasn’t much consistency from town to town in these local precancels. These are referred to as “Towns and Types” or “locals”. As you can imagine, there are lots of these. There are around 43,000 towns and types listed in the *Town and Type* catalog. Each type can be found on multiple Scott numbers. There are estimates that there are well over 4 million individual precancels known to exist.

The first attempt to supply precanceled stamps from the Bureau of Printing and Engraving occurred in 1916. The Bureau supplied precancels to three cities (Augusta, ME; New Orleans, LA, and Springfield, MA.) and these are considered to be the forerunners of all bureau precancels. See Figure 2 The demand for these stamps increased as companies used the postal service more and more to deliver their mail, catalogs and packages. In May, 1923, precanceling was adapted to the web-fed Stickney Rotary Intaglio press that was then used for the production of all U. S. postage stamps. Bureau precancels were produced on it and various other presses until 1978. Postmasters needed to order 500,000 stamps in sheets, or 250,000 stamps in coils.

The Precancel Stamp Society has just issued the Sixth Edition, April 2020, of the *Catalog of United States Bureau Precancels*. In it are listings for 9,414 different Bureau precanceled stamps. That’s all the Bureau precancels there are; it’s a fixed number, and there won’t be any more. So as a collector one has an easily-viewed goal of a complete collection. Accomplishing the goal will be a challenge, especially if one doesn’t win the lottery. But having a nice collection is not too difficult. Most precancels are valued at twenty or twenty-five cents, not a strain on one’s wallet. And album pages are easily available. You can even create your own, as I did. See figure 3 (shown on the front page) for an album page from my collection of Bureau precancels, showing some of the precancels from the state of Florida, including the two from Orlando.

So what happened in 1978?

The Bureau introduced a new concept in Bureau precancels, the National, “lines only” type of overprint. This style of precancel would be valid at any post office, so didn’t need the city and state designation. Figure 4 is an example of that style of precancel.

Two years later the Bureau printed the first of a class of special service precancels designed to be used on a particular class of mail. This type of precancel, the “service-inscribed” precancel, is also valid at all post offices. See Figure 5.

Since these types didn’t conform to the previous standard precancel format they are not included in the new edition of the Bureau catalog mentioned above. But there is a supplement to the sixth edition of *The Precancel Stamp Society Catalog of United States Bureau Precancels*. The new catalog in progress is the *Catalog of National and Service Inscribed Precancels*, First Edition, 2020. The word “bureau” is not mentioned in the title of the new catalog. Although some of the stamps in this catalog



Figure 1

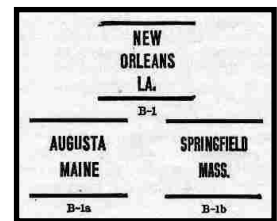


Figure 2



Figure 4



Figure 5



## Cover Story: Precancels Progress cont.

were printed by the Bureau of Printing and Engraving, many of them were printed in the private sector. So far, there are about 300 of these “lines only” or “service-inscribed” types.

Many of these types are coil stamps, so I have decided to collect them in pairs, just the way I collect coils of other U. S. issues. Before the Postal Service settled on having the service requirement printed on the stamps there was a variety of styles. Figure 6 is a page from my National Types album showing stamps that are lines only, stamps with lines and service designation printed between the lines, stamps with service designation printed on the stamps, and stamps with service designation printed on the stamps with lines added. I have ignored the plate numbers and the possibility of line pairs. You’ll notice there are some spaces without stamps. These are for imperf pairs, known to exist, but, unfortunately, not in my collection yet.

If you look carefully you’ll see the catalog numbers with some additional digits. These digits represent the exact style and format of the precancel as described the new *Catalog of National and Service Inscribed Precancels*. Once the catalog is published, I’ll have to re-do my pages to be sure my stamps’ identifications agree with what’s in the new catalog.

So here’s a brand new collectible for all of you whose current collections have become so good that you can’t afford to add to them. Start afresh! And the prices are reasonable: most of the stamps are priced under \$1.00, although there are some pricier, and some—just a few, as in all collections—that need serious consideration.

To bring this posting up to date, there are some new NSI (National and Service Inscribed issues. Earlier this year, the Butterfly Garden Flowers stamps were issued. There are two of these, one having three flowers and one having just two. The Scott catalog numbers are 5664 and 5665 and the stamps are designated for Non Profit mail only. And just this spring the Flags on Barns stamps were issued. These are coil stamps approved for use on Presorted Mail and the catalog numbers are 5684, 5685, 5686, and 5687.

How’s that for Precancel Progress!

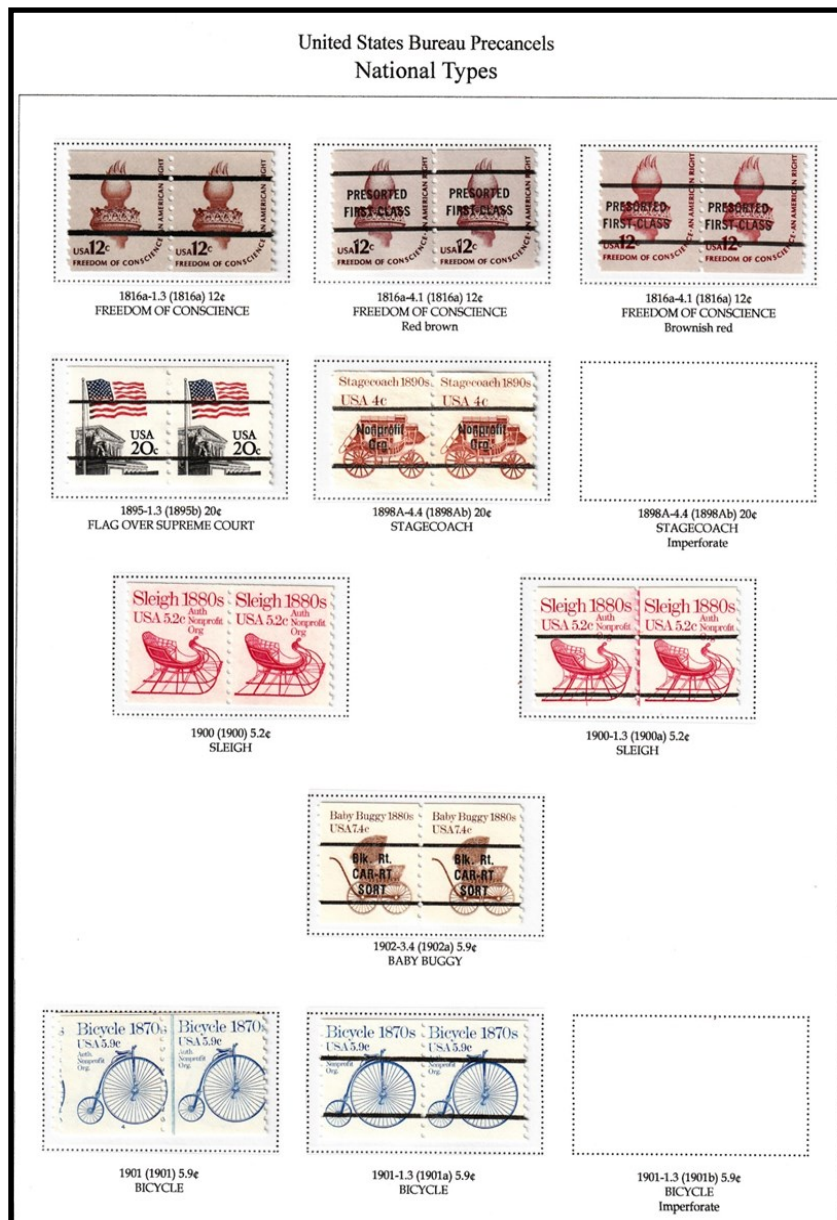


Figure 6



5664

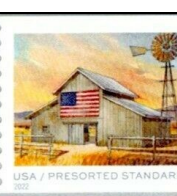
5665



5684



5685



5686



5687



## CFSC to Increase Hours

By Stephen Patrick

Everything scheduled for the October 6 CFSC meeting will be the same, called auction, etc.

**However, there will be a club NEW FEATURE.** The doors to the Oak Room will also be open from 2:00 to 4:00 p.m. for a work/study session. The extra two hours will be unstructured but allow those who don't drive at night and others to access club materials. Here are some of the activities that will be available: catalogues, library books and journals, our electronic watermark detector, mound of stamps, and electric perf gauge.

The club invests about \$900 to provide up-to-date Scott catalogues, yet they are underused. The two hour session will allow time to update values for a country collection, identify catalogue numbers and prices for troubling stamps, correctly prepare items for auction, and research newer issues.

The plan is to have a selection of useful items from our club library for reading or checkout. We hope to have recent Linn's and other specialty magazines for reading pleasure. There will be a mound of stamps from our inventory to pick through for very modest prices. The club owns an electronic microscope that can be programed into your laptop computer for great enlargements.

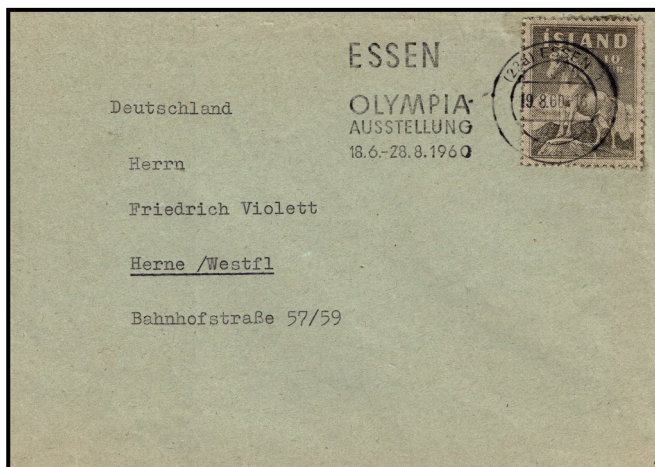
There will be time for fellowship; general philatelic discussion and experienced collectors may be able to offer advice and help for collecting and exhibiting. We will break for supper from 4:00 to 5:30 and then have our regular meeting. This is an experiment and an attempt to try something new for the benefit of club members. We had to wait till October to begin the new sessions to obtain the room and time slot in our new contract with the County. Let's see if we can make it work. We will be looking for volunteers to help.

## An odd cover indeed from the 1960 Essen Olympia!

By Mike Schumacher



In 1960, Iceland issued two stamps depicting it's iconic horse which is a pure-bred breed since 986 when parliament banned the importation of other horses. The Icelandic horse is however, a very popular breed around the world. The largest population of Icelandic Horses living outside of Iceland are in Germany. Thus it would not be uncommon for the subject of an article in a German newspaper to be about the Icelandic Horse (such as the article shown below). The interesting aspect of the article is the cut out of the picture that was in the article. It appears that the creator of the cover that this article is about used the picture from the article in the German newspaper to affix to the Essen Olympia cover, before having it postmarked with the special event cancel from the 1960 Essen Olympia. So in essence, a photo of the 10aur Icelandic horse stamp was used to make this philatelic oddity. Hey, you do what you have to do, when the stamp isn't available at the local post office.



I wonder—what would the judges think of this cover in my Icelandic Horse exhibit?



Below is a copy of the handout provided by Henry Jehan at his presentation in August as requested by club members who were not able to attend his enlightening presentation. Thanks Henry!

## STAMPS WITH HIDDEN IMAGES MADE VISIBLE BY USING THE USPS STAMP DECODER

Scott No.	Year	Face Value	Stamp Description	Hidden Image(s)
3036	1998	\$1.00	Red Fox	Fox
3036 a	2002	\$1.00	Red Fox	Fox
3167	1997	32¢	Air Force Thunderbirds	"USAF", Star in circle, View at 15 degrees
3168	1997	32¢	Lon Chaney as the Phantom	2 Opera masks
3169	1997	32¢	Bella Lugosi as Dracula	3 Bats
3170	1997	32¢	Boris Karloff as Frankenstein	3 Lightning bolts
3171	1997	32¢	Boris Karloff as the Mummy	2 Egyptian deities
3172	1997	32¢	Lon Chaney, Jr. as the Wolf Man	2 Howling wolves
3178	1997	\$3.00	Mars Pathfinder	"• MARS PATHFINDER • JULY 4, 1997 • USPS" (repeating)
3206	1998	32¢	Wisconsin	Badger
3230	1998	32¢	Bright Eyes Dog	Dog bone and dog house
3231	1998	32¢	Bright Eyes Fish	8 Bubbles
3232	1998	32¢	Bright Eyes Cat	Paw print and mouse
3233	1998	32¢	Bright Eyes Parakeet	Bird cage
3234	1998	32¢	Bright Eyes Hamster	Exercise wheel
3238	1998	32¢	Space City	Large & small spacecraft, figure
3239	1998	32¢	Spaceship landing	Small spacecraft
3240	1998	32¢	Person in space suit	Small spacecraft
3241	1998	32¢	Space ship taking off	Small spacecraft
3242	1998	32¢	Large domed structure	Large & small spacecraft
3261	1998	\$3.20	Shuttle Landing	"ENTERPRISE/COLUMBIA/CHALLENGER/ATLANTIS/ENDEAVOR/DISCOVERY"
3262	1998	\$11.75	Shuttle Piggyback	"ENTERPRISE/COLUMBIA/CHALLENGER/ATLANTIS/ENDEAVOR/DISCOVERY"
3321	1999	33¢	Skateboarding	"GNARLY"
3322	1999	33¢	BMX biking	"RAD"
3323	1999	33¢	Snowboarding	"SWEET"
3324	1999	33¢	Inline Skating	"PHAT"
3472	2001	\$3.50	US Capitol	"PRIORITY MAIL"
3473	2001	\$12.25	Washington Monument	"EXPRESS MAIL"
3647	2002	\$3.85	Jefferson Memorial	Jefferson's Signature
3648	2002	\$13.65	U.S. Capitol Dome	U.S. Flag
3651	2002	37¢	Harry Houdini	4 Chains around Houdini's body
3771	2003	80¢	Special Olympics	Special Olympics logo, View at 90 degrees
3787	2003	37¢	Old Cape Henry, VA	Date: "1792"
3788	2003	37¢	Cape Lookout, NC	Date: "1859"
3789	2003	37¢	Morris Island, SC	Date: "1876"
3790	2003	37¢	Tybee Island, GA	Date: "1867"
3791	2003	37¢	Hillsboro Inlet, FL	Date: "1907"
3808	2003	37¢	Bronko Nagurski	Football Player
3809	2003	37¢	Ernie Nevers	Football Player
3810	2003	37¢	Walter Camp	Football Player
3811	2003	37¢	Harold "Red" Grange	Football Player
3838	2004	37¢	U.S. Air Force Academy	Peregrine falcon, View at 90 degrees
3862	2004	37¢	National WWII Memorial	U.S. Flag

**The Central Florida Stamp Club** is a 75+ year old organization governed by a Board of Directors elected by the general membership every two years and dedicated to the enjoyment of the hobby of stamp collecting.

- Membership is a reasonable \$25 per year, \$6 for youth.
- Meetings are twice a month on the first and third Thursdays.
- The Membership of the CFSC includes many diverse interests that cover the range from A-Z.
- The meeting is centrally located to downtown Orlando and can be easily accessed from SR 50 (Colonial Drive) and I/4.
- The Marks Street Senior Center has been our host for more than 25 years and provides a pleasant meeting room with easy access and plenty of free parking.
- The informal part of the meeting is prior to 6:00pm. The business side of things will be brief. Cried auction and/or presentation to start at 6:10 until 7:10 Followed by auction wrap up and informal discussions. We must be out of the building by 8:00 without exception.
- The Membership of the CFSC participates as the host and sponsor of the one day shows in January/February, April & June. In addition, we are the resident hosting club for FLOREX which is held in the Central Florida area.
- The CFSC maintains a website: [CentralFloridaStampClub.org](http://CentralFloridaStampClub.org)
- Benefits of membership include; bi-monthly newsletter, access to loaner equipment & catalogs, participation in door prize drawings, the right to bid in cried/silent auctions — and much more.
- As of 06.2022

## Central Florida Stamp Club



**NOTE:** Opinions expressed in this newsletter are solely those of the authors placing articles, and are not reflective of the CFSC or any members.

**The Editor of this newsletter, Mike Schumacher**  
can be reached at E-mail address  
[Editor@CentralFloridaStampClub.org](mailto:Editor@CentralFloridaStampClub.org)

### CFSC Officers (2022/2024)

President	Mike Schumacher
VP-Operations	Mike Smith
VP-Programs	Carlos Guffain
Treasurer	Rick Cohen
Secretary	Mel Borofsky
Director-at-Large	Jerry Eller
Director-at-Large	Newt Kulp
Director-at-Large	James Cooney
Director-at-Large	A. Stephen Patrick