



#699
August 1968



THE COVER STORY

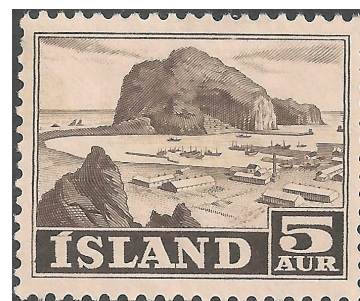
Vestmannaeyjar



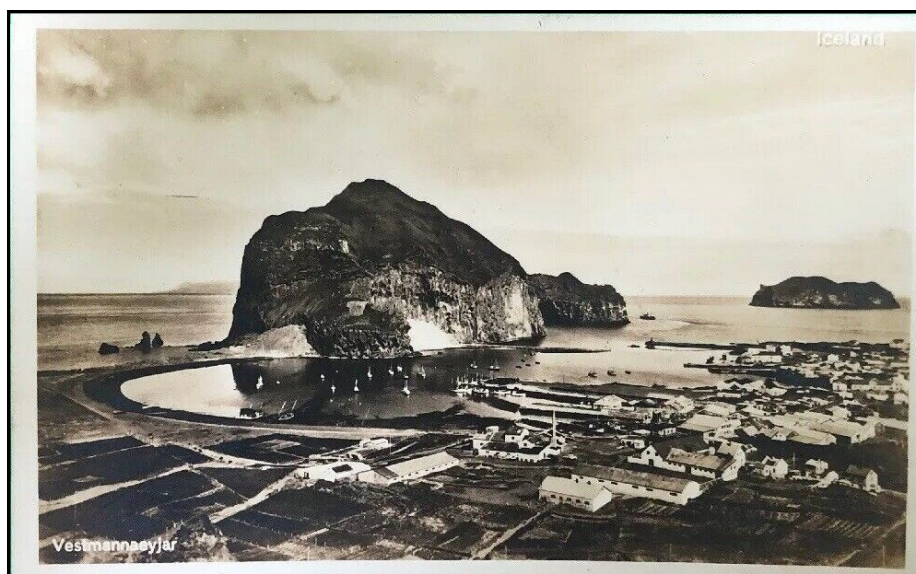
Issued: 12.10.1950



Issued: 12.10.1950



Issued: 3.12.1954



Vestmannaeyjar harbor postcard by Baldvin Palsson, Reykjavik, Iceland 1910

www.CentralFloridaStampClub.org

Upcoming Schedule—October

** Pre-meeting sessions

October 5th – NO PRE-MEETING - For the coming year pre-meetings will only occur on the second club meeting of the month.

October 19th meeting starting at 2:00 pm CFSC hosting the German Philatelic Society meeting—all are welcome to attend. CFSC members can come during that time and work on their own philatelic interests in another part of the room.

October (1st meeting) A Called Auction. Members can bring three items with a minimal value of \$5.00. Door prize available.

October (2nd meeting) Presentation by Mel Borofsky on the **Machins and Charlies**. Also a silent auction and door prize.

September Meetings Recap

(1st meeting) Robert Fischer did a presentation on “**Azad Hind stamps of WWII**” followed by a silent auction. 17 lots sold with total sales of \$145.00. Eight people met for dinner; four people attended the pre-meeting and 35 Members attended the meeting. Bill Johnston won the \$10 door prize. And Mark Haas won the Maitland show certificate. Mimi brought snacks—thanks Mimi!

(2nd meeting) The German Philatelic Society met and had 6 members in attendance prior to the CFSC meeting. 9 members met for dinner and 34 members and one guest attended the meeting. Presentation by Steve Patrick on “**The 1876 Philadelphia Exhibition— the 1st US World Fair**” and a silent auction was conducted — 21 lots sold with total sales of \$288.50. Allen Lane won the \$10 door prize. Third Quarter Birthdays were celebrated and Phil Fettig won a \$10.00 certificate. Thanks again Mimi for the snacks!



Event Calendar 2023

FLOREX 2023 December 1-2, 2023

Tommy Lawrence Arena

Volusia County Fairgrounds—Deland

For more info: www.FloridaStampShows.com

Newest Members

Welcome to our newest member(s):

Ron Aguilera—member # 767—is interested in learning about philately. Welcome Ron!

Ted Bahry - member # 768 interests include: US Postal History & Wake and Midway Island. Welcome Ted!

Who will be new member number 769?

Dinner Plans

There are plans to meet at 4:30pm at the Chuan Lu Garden at 1101 E. Colonial Drive. Located on the north side of Colonial Drive one block west of Mills Ave. There is plenty of parking behind the restaurant. Bring your appetite – and topics for discussion.

Boston International Stamp Show

May 23-31, 2026

Boston, Massachusetts



More info at:
<https://boston2026.org>

Quoted

“Believe you can and you’re half way there.”

Theodore Roosevelt

Five cent Theodore Roosevelt stamp Scott # 557
issued October 27, 1922

First day cities included: New York, NY, Oyster Bay, NY and Washington D.C.



The Editor's Box



Newsletter articles needed! Articles can be submitted in a word document with scans and attached to an email. Submit articles to:

Editor@CentralFloridaStampClub.org



A call to duty from Uncle Sam— write and submit some articles for the CFSC Philatelic Missive.

It could be a cover story or a shorter half page or full page article.

Write about something philatelic—interesting to you.

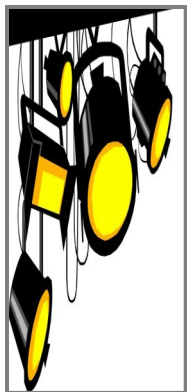


President's Message by Mike Schumacher

Greetings CFSC Members: Hopefully, everyone is keeping cool and having a wonderful year!

- ⇒ Summer has come and gone and now it is fall. How quickly the year is passing by—soon we will be heading into the Holiday Seasons- Halloween; Thanksgiving, Christmas, Hanukah, Kwanza, New Years, etc. .Please don't forget to put together that article that you were thinking about writing for the Philatelic Missive. The newsletter file has been collecting more dust than articles the past couple of months. Still a couple of chances to write that article and have it published before the end of the year (and get in on the voting in January for best article of 2023).
- ⇒ **FLOREX**—set up day –Thursday November 30th followed by two days of the show – Friday December 1st 10:00am to 6:00pm and Saturday December 2nd 10:00am to 4: plans continue to progress—show cachets are ready; 23 dealers currently signed up and 29 competitive exhibit applications have been received-filling 108 frames. Plus 2 non-competitive exhibits. **Opportunities to volunteer are still available** **An exhibit chairperson is still needed!** If interested, please let me know. Team work is important to the success of the show.
- ⇒ Once again, THANK YOU to CFSC members who helped staff the registration table and assist in other ways to set up and close the Maitland show on September 9th. A strong showing of CFSC members also in attending the show.
- ⇒ **Opportunities for CFSC members** to get involved and help the club moving forward into the future are always available. Your skills and talents can be put to good use for the club. If you have computer skills the club could use your help on a variety of projects (i.e. assisting with club meeting auction results recording; etc. etc.) Other skills also needed. Another opportunity always awaits and that is submitting an article for the monthly newsletter. Article submissions have been mighty sparse lately. Submit an article!! Thanks!
- ⇒ **Election time approaches for CFSC**— current two year terms for the Board members ends in January. So if you are interested in serving on the Board, nominations will be accepted later this year. Board members assist with conducting CFSC business to keep things functioning well and in the best interest of the club and it's membership. It's an opportunity to get involved and help lead the club into the future. More information to follow at upcoming meetings and in the newsletters. If you have an interest in serving on the board and want to know more about what is involved, just ask current board members—Mike Smith, Carlos Guffain, Richard Cohen, Mel Borofsky, Newt Kulp, Stephen Patrick, James Cooney, Jerry Eller or myself. Nominations and candidates' bio's for potential Board members should be submitted to the Election Manager by December 1st.
- ⇒ **THANKS:** Jeff Small for stepping up and agreeing to be this year's Election Manager! Turn in your nomination forms and bios to Jeff. Please include a photo of yourself with the bio to be used in the January Philatelic Missive.
- ⇒ **Another upcoming CFSC opportunity** to help the club and it's members to have a good time, is to help with the Holiday Potluck Party at the second meeting in December. (Only 82 days away!) A Planning organizer needed to help coordinate and oversee setup for the meeting.
- ⇒ May CFSC members and their families have a wonderful holiday season!!!

Member Spotlight - Herta (Mimi) Tompkins



Mimi (member # 621) has been a CFSC member since April of 2012. She has a wide variety of philatelic interest which include such topics as: Christmas, Love, Planes, trains and automobiles, flowers, birds, butterflies, cats, flags and soccer to name just a few. Other areas of interest include: German States, Dominica, Cayman Islands and Granada. Mimi also helps to staff the registration table at the Maitland and FLOREX stamp shows. Thank you Mimi!

Mimi is also a frequent contributor to club meetings by bringing bakery treats and fruit from her backyard. Her baked goods treats also made an appearance at the recent Maitland show to the delight of CFSC members and the dealers in attendance. Thank you Mimi, and best of success with your philatelic interests!

Cover Story: Vestmannaeyjar

By: Mike Schumacher

A person never knows when a new philatelic adventure and opportunity will arise when traveling to a stamp exhibition, such as the recent trip to Nordia 2023 in Iceland in July. I allowed a few extra days after the show to do a bit of traveling around Iceland in areas that I had not been to on previous trips. I especially wanted to visit Vestmannaeyjar, so made plans to do so after Nordia 2023.

Vestmannaeyjar is a group of 15 islands and about 30 rock stacks off the south coast of Iceland. All of the islands have been built up over the years as the result of volcanic eruptions. Surtsey is the newest island formed between 1963-1967 from an underwater volcanic eruption. Heimaey is the only island which is populated (population about 4400).

I was joined in this side trip by David Loe from New Zealand and Armagan Ozdinc from the U.S. At Nordia we learned about a collection of Vestmannaeyjar postal history that was donated to the Library archives. When we arrived in Vestmannaeyjar we inquired about viewing the collection and was provided the opportunity to do so. We all enjoyed the time spent looking through the collection and observed many interesting covers and a wealth of postal history information about Vestmannaeyjar. The following items are just a sampling of the material contained in the collection.



(David and Armagan)

Pictures of Vestmannaeyjar Post Office locations over the years:

These pictures show the post office locations from 1873 to 1875; 1875 to 1883; and 1883 to 1891 respectively. (figure 1)

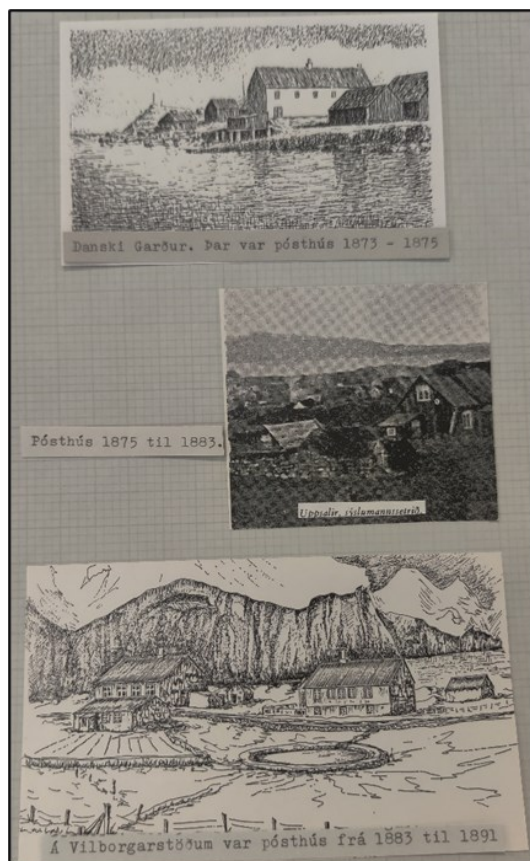


Figure 1

The pictures below show the post office locations from 1891 to 1896 and 1896 to 1904.

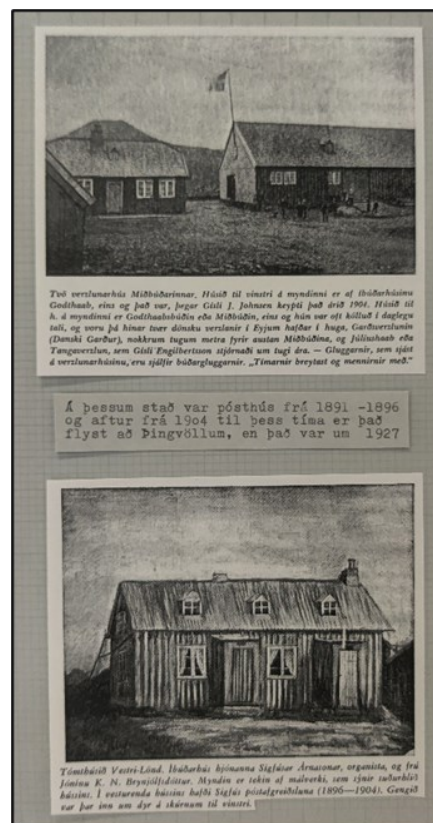


Figure 2

There were more pictures of subsequent post office locations from later years.

Some of the other interesting finds in the collection was information about the various Vestmannaeyjar postmarks, and stamps and covers showing usage of the Vestmannaeyjar cancels.

Cover Story: Vestmannaeyjar cont.

Vestmannaeyjar postmarks and periods of usage are shown in the pictures below. (figures 3 & 4)

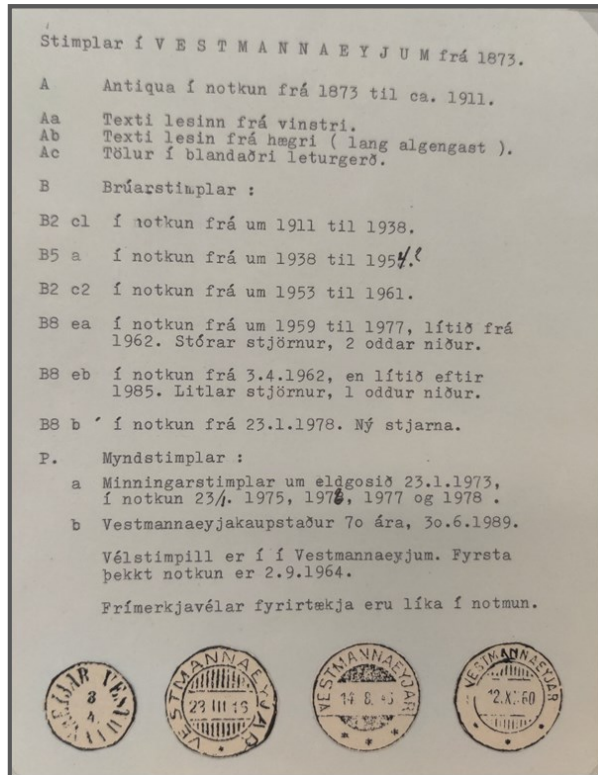


Figure 3

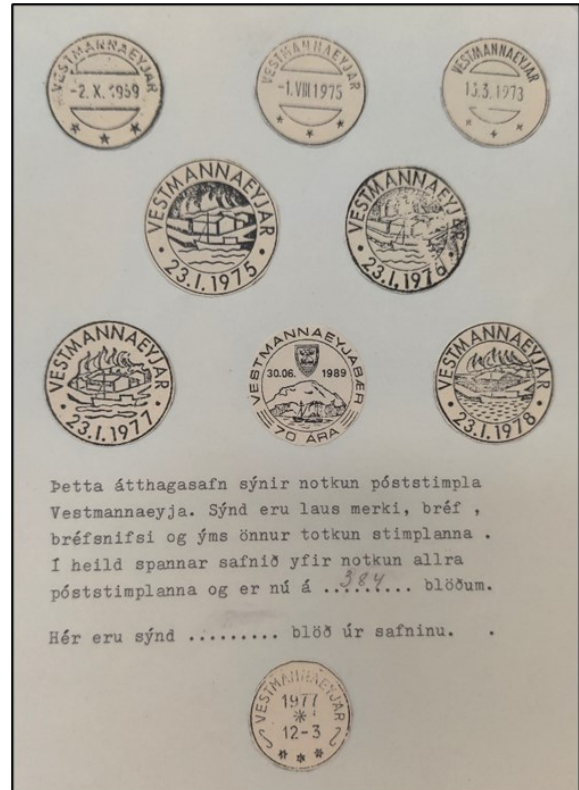


Figure 4

Examples of Vestmannaeyjar postmarks on stamps, (figure 5) and postal stationary. (figure 6)

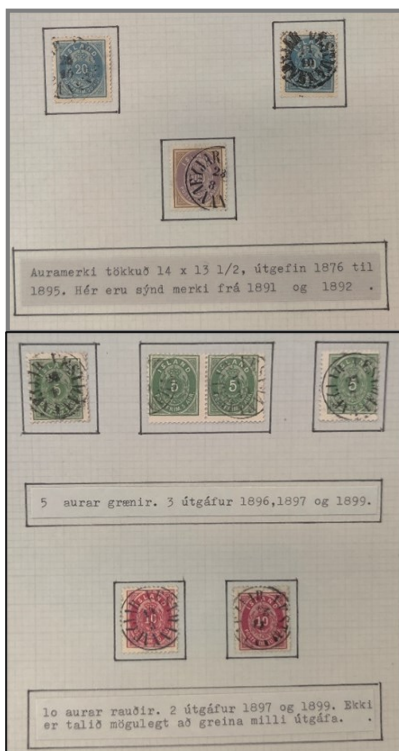


Figure 5

A 1904 postal stationary card from Vestmannaeyjar to Isafjordur, Iceland via Reykjavik. Thus the transit Reykjavik cancel and Isafjordur receiving cancel.



Figure 6

Isafjordur is a small town in the West Fjords (northwestern Iceland).

(Cont. on page 7)

Howard Koslow—Artist & Stamp Designer:

By Mike Schumacher



If you collect U.S. stamps, then you undoubtedly have a number of stamps in your collection designed by Howard Koslow.

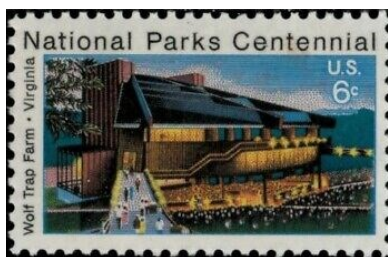
Howard Koslow was born Sept. 21, 1924 in Brooklyn N.Y. (died January 25, 2016)

He was a commercial artist, painter and illustrator. He studied art at Pratt Institute in New York and graduated in 1944. He then apprenticed under French artist Jean Carlu. Koslow later studied painting at the Cranbrook Academy of Art in Bloomfield Hills, Michigan and graphics at the School of Visual Arts in New York.

Before getting into designing U.S. stamps in 1971, he was a commercial artist doing book covers, corporate reports and advertising illustrations. In 1970 a friend suggested he should try his hand at designing postage stamps. Koslow secured his first commission to design the eight-cent stamp commemorating the 10th anniversary of the Antarctic Treaty (an agreement among 12 nations to ensure that their research in the Antarctic should be freely shared and nonmilitary). His early stamp designs were produced by engraving in a linear style using a limited color palate. As his career progressed, he used offset lithography utilizing a larger color range, often working from photographs.



In 1972 he designed his second U.S. stamp—the six-cent National Parks Centennial—Wolf Trap Farm, Virginia.



Koslow designed more than 50 U.S. stamps during his 40+ year career. Stamp subjects included: the lighthouse series (which started out as a one time set, but was so popular it resulted in the creation of five more sets of light-

In 1991, Koslow also designed the 30th anniversary Antarctic Treaty fifty-cent stamp.



houses from around the country); the signing of the Constitution, Carnegie Hall, the Brooklyn Bridge, Ellis Island and from the Legends of American Music series he designed blues and jazz masters—Robert Johnson, Bessie Smith, Muddy Waters, Ma Rainey, Jimmy Rushing, Howlin' Wolf, Billie Holiday and Mildred Bailey.



Howard Koslow is also known for his paintings of Apollo 15, the first launch of the space shuttle Endeavour and many others. His paintings can be seen at the Air Force Academy in Denver, CO; the National Air and Space Museum in Washington D.C. and the NASA Art Gallery at the Space Center in Cape Canaveral, Florida.



cont. from Page 5

Vestmannaeyjar postmarks

1938 P. Petersen cover with block of King Christian X Silver jubilee issue. (figure 7)



Figure 7

1956 First Day cover to Oslo, Norway. (figure 8)

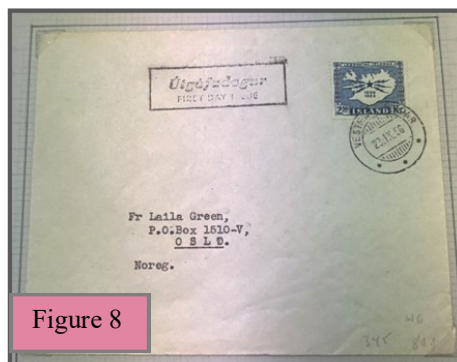


Figure 8

Other various postal markings used by Vestmannaeyjar post offices. (figure 9)

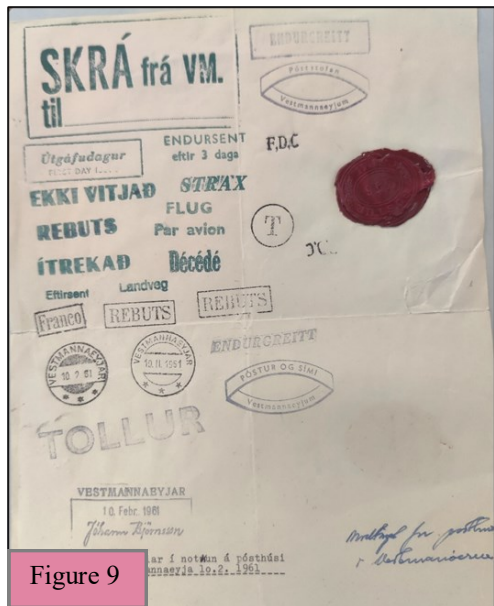


Figure 9

The collection of course contained material related to the 1973 eruption of Eldfell where most of the population of 5200 residents had to be evacuated in the middle of the night. The lava and ash covered nearly one-fifth of the town and closed off part of the harbor entrance before it stopped. (figure 10)

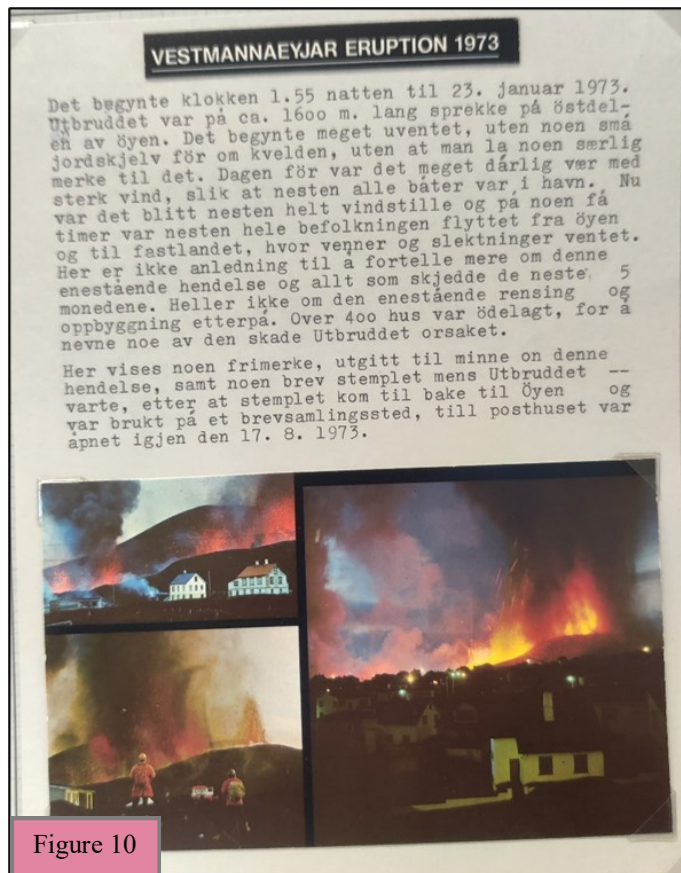


Figure 10

In 1975, Iceland issued two stamps and a special postmark to commemorate the 1973 Eldfell volcanic eruption. (figure 11)



Figure 11

The items shown in this articles only provides a small sample of the material contained in the collection in the archives at the library. What a wonderful opportunity this visit to Vestmannaeyjar turned out to be!

Questionable eBay, # 12

Ridiculous - By Francis Ferguson



Listing: US 5c Gray Brown, Special Printing (205C). light cancel. *5c Gray Brown, Special Printing (205C). almost perfectly centered deep rich color and prooflike impression I DONT HAVE A CERT BUT I AM PRETTY SURE IT IS A 205C. Starting bid of \$5,000. Shipping charge of \$100 & return policy of 30 days. Listing from Australia.*

Scott's CV of \$50,000. Here is the note in the catalog: "Although Post Office records indicate that 2,463 examples of the 5c Garfield Special Printing were sold, almost all of these stamps appear to have been from supplies of the regular issue No. 205. The actual Special Printings, No. 205C, came from a small supply sent to the Third Assistant Post Master General before the regular issue was available. Only 22 examples have been certified as genuine Special Printings. While use of the No. 205C for postage was legal, no used examples are recorded."

Where to begin? Could this possibly be a Special Printing of No. 205C? It is remotely possible -- but highly unlikely. To think this could be a gem is fantasy in my opinion.

I own a special printing of No. 211B and it has a very particular look -- it is very tough to make that determination from even a high-resolution scan. One simply must see the "patient" in person to have any realistic chance of identification.

What do you think?



The Twelfth International Philatelic Exhibition
of the United States proudly presented by

Boston 2026 World Stamp Show, Inc.

May 23–30, 2026

at the Boston Convention & Exhibition
Center at the Boston Seaport



- The Boston Convention and Exhibition Center is located fifteen minutes from Boston Logan International Airport. It is ten minutes from South Station and Amtrak Acela Express to New York City and Washington DC.
- All show hotels will be within walking distance.
- In a 352,000 square foot contiguous exhibition area, BOSTON 2026 WORLD EXPO will be hosting a large dealer and postal administration bourse, as well as a large society presence and hundreds of meetings/events.
- There will be a competitive exhibition of approximately 3,500 frames, plus other special/court of honor exhibits, as well as a large literature competition.



Scan Our QR Code



Stay Up-to-Date on All the Show News,
by visiting

www.Boston2026.org

Contact us at
Boston 2026 World Stamp Show, Inc.
P.O. Box 904, Sudbury, MA 01776

See You in Boston!

Support our CFSC Members - Stamp Dealers



A & B STAMPS

BOB DOWRICK
US, CANADA
AUSTRALIA
PNCs, PLATE BLOCKS
COLLECTIONS, FDCs

PO Box 621665
OVIEDO, FL 32762

407-312-3788
BOB.DOWRICK@ATT.NET



A & R STAMPS

P.O. BOX 568334
ORLANDO, FL 32856-8334

US & WORLDWIDE STAMPS
AIRPOST, NAVAL & FDC'S
DISNEY
EBAY SALES "STAMP890"

ANN
FETTIG

PHIL
FETTIG



THE BROWSE HOUSE

Stamps for the Collector

KATHY TIGER-SEVEDOW

Owner

MARK TIGER

Manager/Buyer

1501 Ridgewood Ave., Suite 108

Holly Hill, FL 32117

browsehousestamps@gmail.com

Jim Archbold Stamps

FSDA Member

U.S. & Worldwide Stamps. Souvenir Sheets, Covers

452 Drage Dr Apopka FL 32703
jimarchboldstamps@cfl.rr.com

Feldman, Jr., Robert H

Feldman Enterprises, LLC.

P.O. Box 160986

Altamonte Springs FL 32716-0986 US

Phone: 352.345.3689

E-Mail: rfeldman4545@gmail.com

Specialization: Buyer & Seller U.S. Retail,
Wholesale & Promotion, U.S. Possessions,
Canada & Provinces, Worldwide

COLLECTORS EXCHANGE

Dealer in Stamps of Great Britain & The Commonwealth



"GREAT BRITAIN-GREAT BUYS"

John R Latter

1814-A EDGEWATER DR.
ORLANDO, FLORIDA 32804

www.CollectorsExchangeOnline.com

E-mail: colex4stamps@cfl.rr.com

CELL PHONE: 407-620-0908



Robert M. Sazama

WORLDWIDE STAMPS

BUYING • SELLING • APPRAISALS

www.floridastampbuyer.com
bob@bobsazama.com

Robert M. Sazama

WORLDWIDE STAMPS
BUYING • SELLING • APPRAISALS



(931) 561-7167

3277 Mayberry Court
The Villages, FL 32163

www.floridastampbuyer.com
bob@bobsazama.com

Search for 12bob on eBay



NORMAN C. HINDS, JR. PHILATELICS



P.O. Box 700273
Wabasso, FL 32970

Phone: 772-589-3741

Email: nch143@aol.com

NORMAN C. HINDS, JR.
EBAY STORE: STORES.EBAY.COM/
NORMANHINDSPHILATELICS

Postage Stamps

Bought and Sold
Member FSDA, GPS, GCCG



APS # 083032

Goldberg, Michael Wilton Stamp Company

300 Cub Ct., Greenville, SC 29609

Main Phone: 407.593.1680

Website: https://www.wiltonstamp.com

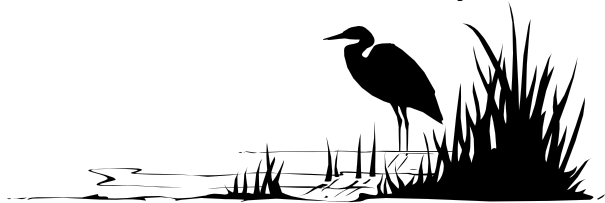
E-Mail: mike@wiltonstamp.com

Specialization: High Quality Worldwide & U.S.
on Approval, Online Store

The Central Florida Stamp Club is a 75+ year old organization governed by a Board of Directors elected by the general membership every two years and dedicated to the enjoyment of the hobby of stamp collecting.

- Membership is a reasonable \$25 per year, \$6 for youth.
- Meetings are twice a month on the first and third Thursdays.
- The Membership of the CFSC includes many diverse interests that cover the range from A-Z.
- The meeting is centrally located to downtown Orlando and can be easily accessed from SR 50 (Colonial Drive) and I/4.
- The Marks Street Senior Center has been our host for more than 25 years and provides a pleasant meeting room with easy access and plenty of free parking.
- The informal part of the meeting is prior to 6:00pm. The business side of things will be brief. Cried auction and/or presentation to start at 6:15 until 7:15 Followed by auction wrap up and informal discussions. We must be out of the building by 8:00 without exception.
- The Membership of the CFSC participates as the host and sponsor of the one day shows in February, April, June & September. In addition, we are the resident hosting club for FLOREX which is held in the Central Florida area.
- The CFSC maintains a website: CentralFloridaStampClub.org
- Benefits of membership include; monthly newsletter, access to loaner equipment & catalogs, participation in door prize drawings, the right to submit and bid in cried/silent auctions — and much more.
- As of 01.2023

Central Florida Stamp Club



NOTE: Opinions expressed in this newsletter are solely those of the authors placing articles, and are not reflective of the CFSC or any members.

**The Editor of this newsletter, Mike Schumacher
can be reached at E-mail address
Editor@CentralFloridaStampClub.org**

CFSC Officers (2022/2024)

President	Mike Schumacher
VP-Programs	Mike Smith
VP-Operations	Carlos Guffain
Treasurer	Rick Cohen
Secretary	Mel Borofsky
Director-at-Large	Jerry Eller
Director-at-Large	Newt Kulp
Director-at-Large	James Cooney
Director-at-Large	A. Stephen Patrick