

# Classifying Stamped Envelopes

By Newt Kulp

Central Florida Stamp Club

May 16, 2024

# What is a Stamped Envelope?

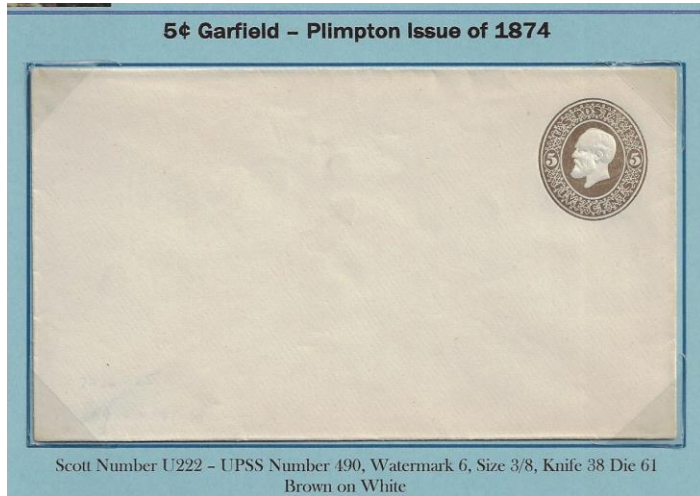
- One of the items classified as postal stationery
  - Also called embossed envelopes
  - Envelope with a pre-printed indicium
- Other types of postal stationery
  - Wrappers
  - Letter Sheets (also called aerograms if used for air mail)
  - Postal Cards
  - Special Use Envelopes
  - Official Envelopes

# How to Collect Stamped Envelopes

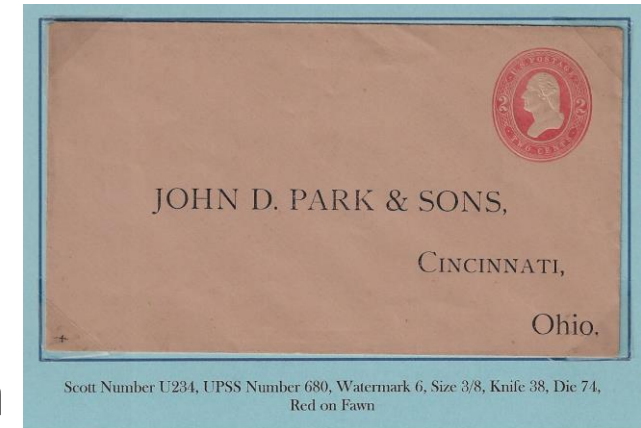
- Formats
  - Entire
  - Cut Squares
- Conditions
  - Mint entire items have four conditions
    - Mint – no printing and no cancellation
    - Mint – corner card
    - Mint – printed address
    - Mint – with both corner card and printed address
  - Used
    - Has a cancellation and address (either pre-printed or hand written)
    - May have a corner card (either pre-printed or hand written)

# Illustrations of various collecting formats

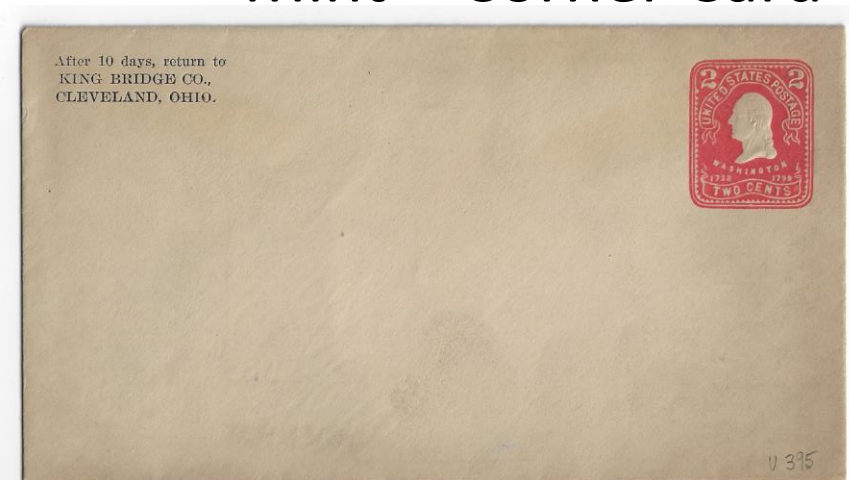
- Mint



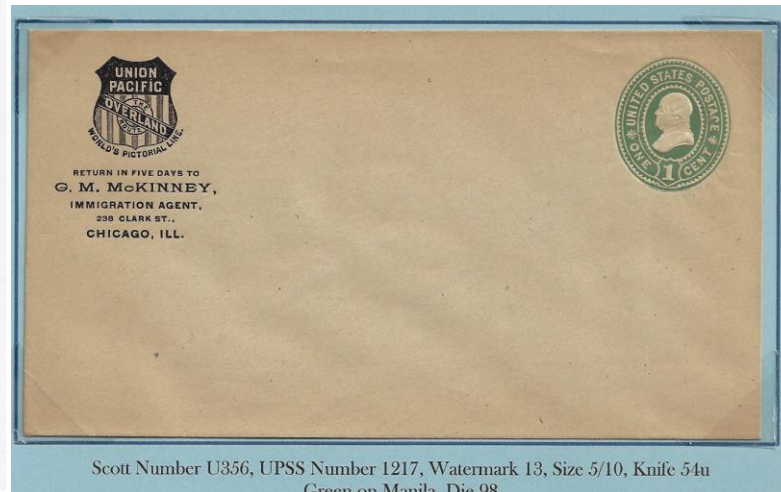
- Mint – Pre-Printed Address



- Mint – Corner Card



- Mint - Both





# Illustrations of Cut Squares

- Mint



- Used



# Tools Needed to Identify a Stamped Envelope

- Basic tools same as for stamps
  - Magnifying glass, tongs, color chart, accurate ruler in millimeters and inches, etc.
- Specialized tools for stamped envelopes
  - Color chart for envelopes (different than a stamp color chart)
  - Indiciem die illustrations with detailed descriptions
  - Size chart for the size of the envelope
  - Watermark illustrations – different from a stamp watermark listing
  - Recycle logo illustrations
  - Sample chart of the knife used to cut out blank envelopes
  - For a specialist – a detail reference catalogue



# Color Chart for the Envelope

**UPSS 19th CENTURY**

**UNITED STATES STAMPED ENVELOPES & WRAPPERS COLOR CHART**

Designed by Bill Cottun

<b>BLuish - WHITE - CREAMY</b> Laid - 1853-1915	<b>AMBER</b> Laid - 1870 - 1915	<b>BUFF</b> Laid - 1853 - 1870
	<b>FAWN</b> Laid 1874 - 1886	<b>LEMON</b> Laid 1874 - 1878
<b>ORANGE</b> Laid 1861 - 1883	<b>CREAM</b> Laid - 1870-1878	<b>ORIENTAL BUFF</b> Laid - 1874 - 1915
<b>BLUE</b> Laid - 1861 - 1862 1874 - 1915	<b>AMBER MANILA</b> Laid - 1878 - 1894	<b>LIGHT - MANILA - DARK</b> Laid Envelope - 1886-1915 Laid Wrapper - 1861-1915

Buff and Manila wrappers cannot be distinguished by color

Truest colors observed in direct noon time day light or in full spectrum fluorescent light (such as OttLight Lamp)

Designed by Bill Cottun  
© Copyright 2012 - bcottun@bcottun.com

**UNITED POSTAL STATIONERY SOCIETY**

**UNITED STATES STAMPED ENVELOPES & WRAPPERS COLOR CHART**

<b>BLuish - WHITE - CREAMY</b> Bluish - Laid - 1853-1915 Creamy Wove - 1915 to Present Wove Extra Quality - 1915 - 1944	<b>WHITE</b> Laid - 1915 Wove - 1914-1919 "War Paper"	<b>AMBER</b> Laid - 1870-1915 Wove - 1915-1920 / 1929-1944 Wove Extra Quality - 1930 - 1944
<b>BLUE</b> Laid - 1875 - 1915 Wove - 1915 - 1944 Wove Extra Quality - 1930 - 1944	<b>BUFF</b> Laid - 1853 - 1870	<b>AMBER MANILA</b> Laid - 1886 - 1893
<b>CREAM</b> Laid - 1870-1877	<b>BUFF (Oriental)</b> Laid - 1886-1915 Wove - 1915-1920	<b>LIGHT - MANILA - DARK</b> Laid - 1870-1915 Wove - 1915-1934
<b>ORANGE</b> Laid 1870 - 1885	<b>FAWN</b> Laid 1878 - 1885	<b>LEMON</b> Laid 1874 - 1878
		<b>BROWN PAPER</b> Wove Glazed Wrapper - 1920

Truest colors observed in direct noon time day light or in full spectrum fluorescent light (such as OttLight Lamp)

Designed by Bill Cottun  
© Copyright 2012 - bcottun@bcottun.com

**ENVELOPE PAPER COLOR 19th Century**

Contract	1st Quality	2nd Quality	3rd Quality
1853	White (4)	Buff	
To			
June 1870		Amber	Cream
July 1870		Amber	Orange
			(1)
1874			Blue (3)
1878		Fawn	
1882			
1886		Oriental buff (2)	Amber Manila
1890			
1894			
1899			

**NOTES**

1. Buff & Dark Buff are Post Office designations after 1870 for envelopes classified by collectors as orange.
2. Buff was also a Post Office designation for Oriental buff after 1886.
3. Blue paper was added to the schedules July 1, 1875.
4. Amber is not mentioned prior to 1870 but some collectors have come to consider some of the yellow-tinted, more calendared buff envelopes to be amber.

20th/21st Century Envelopes

**ENVELOPE PAPER COLOR 20th Century (1)**

Contract	White	Amber	Oriental buff	Blue	Buff	Dark Buff
1900						
1903						
1907						
1911						
1915						
1918						
1923						
1927						
1929						
1932						
1936						
1941						
1944						
1948						
1952						
1954						
To Present						

**NOTES**

1. Laid paper was generally used to 1915 and then wove paper thereafter.
2. Post Office designation for Oriental buff was Buff.
3. Blue paper was added to the schedules July 1, 1875.
4. Brown paper is a 1920 war emergency paper that is either thin and glazed on one side or coarser than grocery bags and unglazed.

20th/21st Century Envelopes



# Indicium Die Illustrations

### Reay & Plimpton Issues

**Reay**

**Die 36** Two cents Jackson; well formed '2's within circles, square periods in 'U.S.', network in 'O' of 'TWO.'

**Dies 36, 48 to 51** brown only (except for scarce vermilion of Dies 48 and 51).  
**Die 52** both brown and red.  
**Dies 53 to 55** red only.

-----**Plimpton 1874**-----

**Die 48** Two cents Jackson; thin, narrow '2's within circles, round periods in "U.S.", network in 'O' of 'TWO.'

**Die 49** Two cents Jackson; '2's in tall (5 mm) ovals, 'O' of 'TWO' has a plain center.

**Die 50** Two cents Jackson; similar to die 49 except the tail of the left '2' touches the oval, 'O' of 'TWO' has a plain center.

**Die 51** Two cents Jackson; similar to die 49 except the 'O' of 'TWO' has a network in the center.

**Die 52** Two cents Jackson; similar to die 49 except for short, thick '2's in small ovals.

**Die 53** Two cents Jackson; similar to die 52 except a line of engine work extends from the 'U' to the outer frame line; circles around the '2's are thicker than Die 52.

**Die 54** Two cents Jackson; similar to die 52 except the diagonal stroke of the 'N' of 'CENTS' is thin.

**Die 55** Two cents Jackson; the bottom of the bust forms a quarter circle.

### The Circular Dies 1915 to 1950

**Die 134(A)** Head large (9¼ mm from tip of nose to nape of neck); base line of both '2's horizontal; 'E' of 'CENTS' closer to inner circle than the 'N' of 'CENTS'; heavy well-formed lettering.

**Die 135(B)** Head large (9¼ mm from tip of nose to nape of neck); 'U' of 'UNITED' far from value circle (1 mm); the base line of both figure '2's slopes downward to the right.

**Die 136(C)** Head large (9¼ mm from tip of nose to back of head); inner circle much thinner than the outer; lettering and numerals thin and clear cut; both '2's slope downward to the right; 'U' far from left circle of value.

**Die 137(D)** Head large (9¼ mm from tip of nose to back of head); 'C' of 'CENTS' close to circle; baseline of right figure '2' slants downward to the right; left numeral '2' larger than right '2'; 'T' and 'S' of 'CENTS' close together at bottom (<1 mm); lettering heavy and well-formed.

**Die 138(E)** Head small (8¼ mm from tip of nose to back of head); 'T' and 'S' of 'CENTS' widely spaced at bottom (1 mm); the 'N' of 'CENTS' is narrow; baseline of left figure '2' slopes downward to the right; heavy strands of hair resemble bumps; nose bluntly rounded at tip; side flaps have square ends.

**Die 139(F)** Head small (8¼ mm); 'T' and 'S' of 'CENTS' widely spaced at bottom (1 mm); the 'N' of 'CENTS' is narrow; baseline of left figure '2' slopes downward to the right; heavy strands of hair resemble bumps; nose bluntly rounded at tip; side flaps have square ends.

**Die 140(H)** Head is 9 mm wide; clear sharp impression; all 'T's have short top strokes (1½ mm); both figure '2's slope downward to the right (left '2' slopes more strongly); 'U' of 'UNITED' is ½ mm from left value circle.

**Die 141(H2)** Similar to Die 140(H) but 'T's have long top strokes (1½ mm).

**Die 142(I)** Both large (9¼ mm) and small (8¼ mm) heads (from tip of nose to nape of neck); The letters 'C', 'U', 'O' and 'G' are very narrow and oval shaped.

### The Circular Dies 1915 to 1950

20th/21st Century Envelopes

CIRCULAR DIE	KNIFE	2¢ CARMINE														
		134	134	135	135	137	138	139	140	141	142					
7 35	LB	W	W													
8 41	HB	W	A	B												
9 42	LB	W	A	O	B											
10 57	HB	W	A	B												
10 57x		W	A	B												
10 57w		W	A	B												
10 58	LB ROTARY	W	A			W	A	O	B	W						
59	LB	W	A	O	B											
59w		W	A	O	B											
60	LB R,TF 54		W	A	B	W										
11 65	LB	W	A													
13 78	HB	W	A	B												
78u		W	A	B												
78x		W	A	B												
78w		W	A	B												
79	LB ROTARY	W	A			W	A	O	B	W						
79w		W	A			W	A	O	B	W						
80	LB TF 54	W	A	O	B											
80w		W	A	O	B											
81	LB R,TF 59		W	A	O	B										
14 84	W	W														
84x		W														
17 89	W	W														
89x		W														
19 91	HB	W	A	B												
91x		W	A	B												
20 92w	LB	W	A	B												
92w	HB	W	A	B												
21 100	HB	W	A	O	B											
100u		W	A	O	B											
100x		W	A	B												
100w		W	A	B												
103	LB	W	A	B												
103w		W	A	B												
104	LB R,TF 60		W	A	O	B										
23 106	HB	W	A	B												
106u		W	A	B												
106x		W	A	B												
106w		W	A	B												
106w		W	A	B												
110	LB ROTARY	W	A			W	A	B								
110w		W	A			W	A	B								
111	LB R,TF 63		W	A												
112	LB	W	A	B												
112w		W	A	B												
116	HB, w/mks	W														
116x	42 & 43	W														
116w		W														
116w		W														
25 124	HB	W	A	B												
124u		W	A	B												
124x		W	A	B												
WP WS		W	U													

**To use this chart for envelope identification:**

- Determine the envelope size.
- Determine the knife type.
- Determine the paper color.
- Use the chart to determine which dies exist for your envelope.
- Determine the watermark, this may narrow die choices.
- If more than one die, look up the few dies that match the criteria.

**Abbreviations**  
TF xx = Height of top flap in mm.  
HB = High Back  
LB = Low Back  
LB Rotary = Low Back with "feather" cuts and more square side flap ends.

**Paper Colors**  
W = White  
A = Amber  
B = Blue  
O = Oriental buff (orange-bm)  
M = Manila  
U = Unglazed bm



# Watermark Illustrations

## 19<sup>th</sup> Century Watermarks



1a - 1853 Nesbitt Issues  
Letters perpendicular to laid lines.

1 - 1853 to 1869 Nesbitt Issues  
Letters at 30 to 48 degree angle to laid lines.

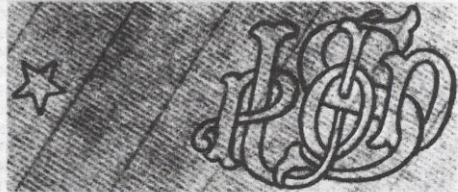
2 - 1870 to 1878 Reay & Early  
Plimpton Issues.



3 - 1876 Centennial Watermark  
Intended only for Centennial issues though paper remainders used for some regular and War Department issues.



4 - 1877 Post Office Watermark  
Intended only for Post Office envelopes but also used for some regular and War Department issues.



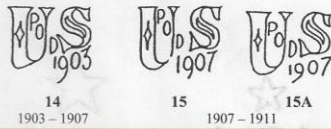
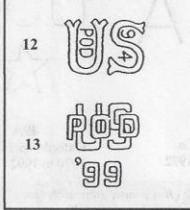
5 - 1878 to 1881 Plimpton Issue to distinguish standard paper, used frequently for specimens, bidders samples and other special printings. *Note: only a paper disturbance may be observable for the star on some papers, especially manila.*



6 - 1882 to 1885 Plimpton Issue to distinguish envelopes made under 1882-5 contract.

## 20<sup>th</sup> Century Watermark Illustrations

### 19<sup>th</sup> Century Watermarks on 20<sup>th</sup> Century Envelopes

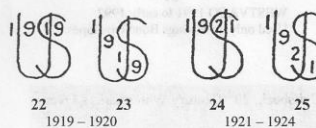


The '9' of 15A is thicker, has a smaller, round circle at top and the stem curves around under the '1' unlike the '9' of 15; bottom of vertical line of '7' curves right on wmk 15.



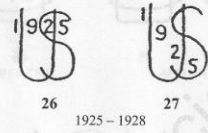
Watermarks 17 & 18 are more widely spaced than shown.

Previous watermarks (18 & prior) on laid paper while following watermarks (19 & after) are on wove paper.



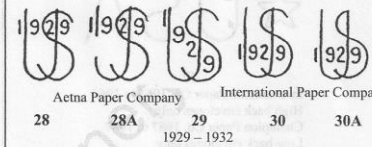
Aetna Paper Company American Writing Paper Company

For more information on watermarks see Bill Geijsbeek, *Postal Stationery* Vols. 55(5) pp 292-293, 303 Sept Oct 2013 and 55(6) p 341 Nov Dec 2013.



26 1925 - 1928

27 1925 - 1928



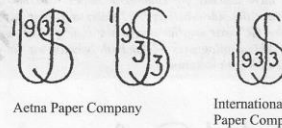
28 Aetna Paper Company

28A 1929 - 1932

29 1929 - 1932

30 International Paper Company

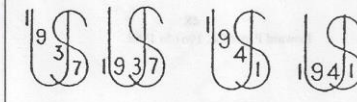
30A 1929 - 1932



31 Aetna Paper Company

32 1933 - 1936

33 International Paper Company

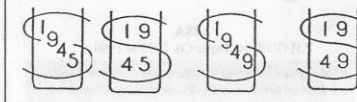


35 1937 - 1940

36 1937 - 1940

38 1941 - 1944

39 1941 - 1944



40 1945 - 1948

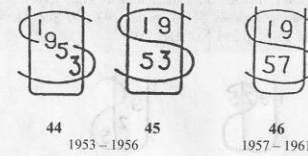
41 1945 - 1948

42 1949 - 1952

43 1949 - 1952

Watermarks 34 & 37 were assigned but never issued.

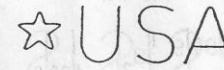
## 20<sup>th</sup> Century Watermarks



44 1953 - 1956

45 1953 - 1956

46 1957 - 1961



47

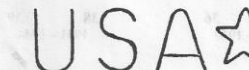
International Paper Co. 1961 to 1965  
High back envelopes only  
Champion Paper Co. 1967 to 1987  
Low-back envelopes only

Some have labeled the Champion paper watermark as 47A since the star was larger (20 versus 16 mm across) and the "A" was smaller across the base (14 versus 18 mm). This catalog uses 47 for both because no die was issued with both watermarks.



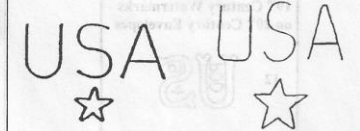
48

Howard Paper Co. 1961 to 1968



48A

P.H. Glatfelter Paper Co. 1970 to 1990  
Rubber plate watermark rather than dandy roll watermark as all previous; larger star than watermark 48.



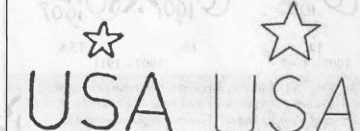
49

Oxford Paper Co. 1965 to 1970, 1972

49A

Oxford Paper Co. 1970 to 1992

Watermark 49A has a more square bottom of "U" and larger star than watermark 49.



50

Crown-Zellerbach Paper Co. 1965 to 1967

50A

Westvaco, 1985 to 1992

The Westvaco watermark 50 is 6 mm taller, the star is larger and the bottom of the "U" is more square.



51

WESTVACO 1991 to early 1992  
Used only on Savings Bond envelopes.

For more information on 20<sup>th</sup> Century watermarks see Bill Geijsbeek, *20<sup>th</sup> Century Watermarks - Overview*. *Postal Stationery* Vol 51(2) pp 34-37, 2009.



# Envelope Size Charts

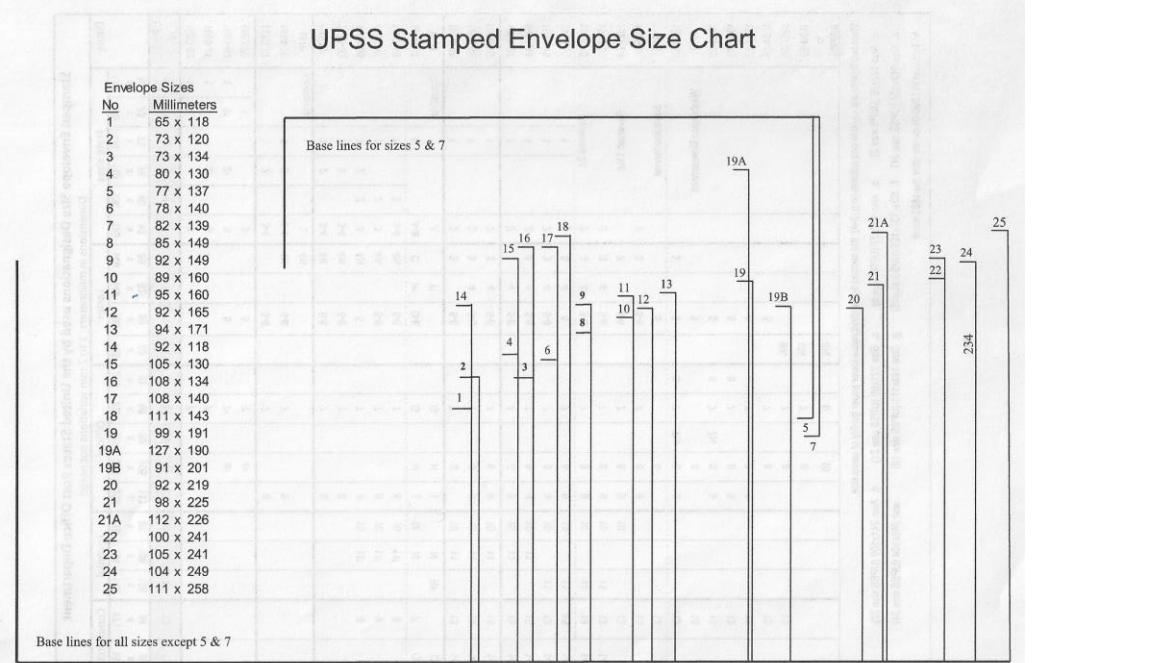
Stamped Envelope Size Designations used by the United States Post Office Department																						
Dimensions in millimeters; 1 to 2 mm variations not noted																						
Dates	Note sizes						Letter					Official				Baronial			Commercial			
	118 x 65	120 x 73	134 x 73	140 x 78	130 x 80	139 x 82	149 x 85	149 x 92	160 x 89	165 x 92	219 x 92	225 x 98	191 x 99	241 x 105	258 x 111	118 x 92	134 x 108	140 x 108	171 x 94	160 x 95		
UPSS Size	1	2	3	6	4	7	8	9	10	12	20	21	19	23	25	14	16	17	13	11		
1853-60	1	1				3						7 <sup>c</sup>										
1860-61	1	1		2 <sup>b</sup>		3						7 <sup>c</sup>										
1861-63	1	1 <sup>a</sup>		2 <sup>b</sup>		3				5		7 <sup>c</sup>		8 <sup>d</sup>								
1863-70	1	1				3				5		7		8 <sup>e</sup>								
1870-74			1	2		3-4				5-6		7								8		
1874-76			1	2		3-4	4%			5-6		7								8		
1876	Centennial					3	4%															
1878			1	2		3-4	4%			5-6		7								8		
1879-83			1	2		3-4	4%			5-6		7								8		
1883-86			1	2	2	3	4%			5		7				8	10	11 <sup>f</sup>		9		
1886-87			1		2	3	4%			5-6		7				8	10	11 <sup>f</sup>		9		
1887-89			1		2	3-4	4%			5-6		7				8	10	11 <sup>f</sup>		9		
1890-94			L			A-B	C	P <sup>h</sup>	D-E		G	H	I	M	N	N	R <sup>g</sup>		F	Q <sup>i</sup>		
1893	Columbian					A	P				G	H	I		N					Q		
1894-95			1			2	3			5-6		7				8	10	11		13	14	
1895-98			1			2	3	4		5-6		7				8	9	10	11	13	14	
1899-02			1			2	3	4		5-6		7				8	9	10	11	13	14	
1903-07			1			2	3	4		5-6		7				8	9	10	11	13	14	
1907-11			1			2	3	4		5-6		7				8	9	10	11	13	14	
1911-15			1			2	3	4		5-6		7				8	9	10		11	13	14
1915-16			1			2	3	4		5		7				8	9	10		11	13	14
1916-19		Revalued 2¢				2	3	4		5-6		7				8	9	10		11	13	14
1919-20						2	3	4		5-6		7				8	9	10		11	13	14
1921-24		Revalued 1½¢					3			5-6		7				8	9	10			13	
1925-28						2	3			5-6		7				8	9				13	
1926		Sesqui-centennial								5						8					13	
1929-32							3			5		6	7	7½		8	9				13	
1932		Washington Bicentennial								5						8					13	
1933-36										5		6	7	7½		8	9				13	
1937-40										5		6	7			8	9				13	
1941-53										5		6	7			8	9				13	
1954-56										5						7					13	
1957-58											6%					7					13	
1959-60											6%					7					13	
to present											6%					9					10	

When two figures are used in one column (e.g. 3-4), the second figure designates lower paper quality of same size  
a. Also 122x76 (UPSS size 2)    b. Also 137x77 (UPSS size 5)    c. Size 221x99 (UPSS size 21)    d. Also 241x100 (UPSS size 22)  
e. Size 249x104 (UPSS size 24)    f. Size 130x105 (UPSS size 15)    g. Size 143x111 (UPSS size 18)    and 249x104 (UPSS size 24)  
h. Included in 1890-94 series after the 1893 issue

Above – UPSS size chart – put envelope on chart to get size  
Also gives size and dimensions in millimeters

Right - USPS size dimensions in inches

Left - UPSS size to USPS size



## ENVELOPE SIZES

Since 1853, envelopes have been produced in nearly 30 different sizes. Each size served a purpose at the time it was used. Styles change; most of these sizes are now obsolete. Since 1958, we've used basically two sizes....the UPSS size 12 (also known as the "letter" size or "6 3/4") and the UPSS size 23 (also known as the "legal" size). They exist both PLAIN, and with windows.

Before 1958, however, the picture was more complicated. We've run a gamut of sizes from very small (for "ladies' letters") to very large (for certain oversized documents). In between, special sizes were used for invoices, Savings Bonds, greeting cards, and other documents & forms.

Here are the measurements: you'll need this information when considering what types of albums, sleeves, or mounts to use.

Size 1	4 3/8" x 2 1/2"	Size 10	6 1/4" x 3 1/2"	Size 19	7 1/2" x 3 7/8"
Size 2	4 3/4" x 2 7/8"	Size 11	6 3/8" x 3 3/4"	Size 20	8 5/8" x 3 5/8"
Size 3	5 1/4" x 2 3/4"	Size 12	6 1/2" x 3 5/8"	Size 21	8 7/8" x 3 7/8"
Size 4	5 1/8" x 3 1/8"	Size 13	6 3/4" x 3 3/4"	Size 22	9 1/2" x 3 1/2"
Size 5	5 3/8" x 3"	Size 14	4 5/8" x 3 1/2"	Size 22A	7 1/2" x 5"
Size 6	5 1/2" x 3 1/8"	Size 15	5 1/8" x 4 1/8"	Size 22B	8 7/8" x 4 3/8"
Size 7	5 1/2" x 3 1/4"	Size 16	5 1/4" x 4 1/4"	Size 23	9 1/2" x 4 1/8"
Size 8	5 7/8" x 3 1/4"	Size 17	5 1/2" x 4 1/4"	Size 24	9 3/4" x 4 1/8"
Size 9	5 7/8" x 3 5/8"	Size 18	5 5/8" x 4 3/8"	Size 25	10 1/4" x 4 3/8"
		Size 18A	7 7/8" x 3 1/2"		


For MOST Scott #'s, several different sizes exist, and the Scott Catalog prices the most common size. These are USUALLY the sizes 10 and 13. Other sizes, especially WINDOW envelopes, are less common and command premium prices.

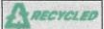
Many sizes were produced for commercial purposes and not personal use. These sizes can often be found ONLY with RETURN ADDRESSES.





# Recycle Logo Illustrations


## Recycled Logo Type Illustrations

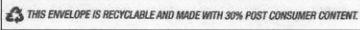
**Type A**  Printed under flap

**Type B**  Printed lower right on back

**Type C**  Printed on recycled paper in keeping with our commitment to the environment

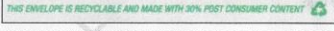
**Type D**  Printed on bottom flap in two lines


**Type E**  Printed on bottom flap in two lines


**Type F**  Printed on center of bottom flap in one line.

**Type G** as Type F, printed on top, right side flap in one line (hidden when flap closed).

**Type H** as Type F printed on the left of the bottom flap in one line.

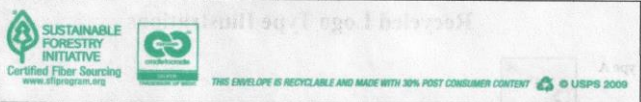
**Type I**  Printed on the left of the bottom flap in one line. Logo appears after text.

**Type J**  With Sustainable Forestry Initiative logo

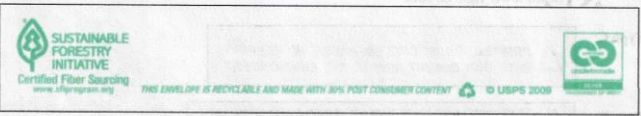
**Type K**  As J but with recycle logo ahead of text


421


## Recycled Logos Continued


**Type L**  As K but with Cradle-to-Cradle logo between SFI logo and text

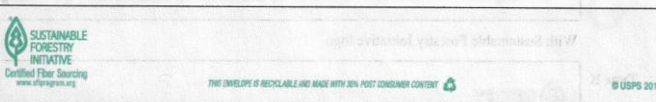
Note: The Sustainable Forest Initiative images on Recycle Logos Type J and L for the earlier issues of Seabiscuit and Liberty Bell vary in height according to the size of the envelope - Size 12 = 16 mm, size 21 = 18 mm and size 23 = 20 mm. All subsequent issues are printed with a SFI logo height of 16 mm.

**Type M**  As L but with Cradle-to-Cradle logo at right

**Type N**  As M but with copyright year of 2011

**Type O**  As N but without Cradle-to-Cradle logo

**Type P**  As O but with copyright year of 2012

**Type Q**  As P but with copyright year of 2013





A couple of pages showing knife die numbers after they are folded.

# Sample Charts of Knives

There are over 130 different knives

Knives

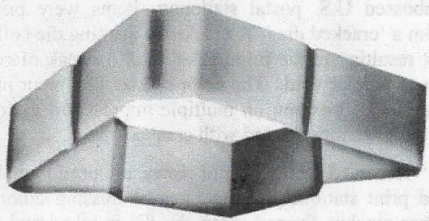
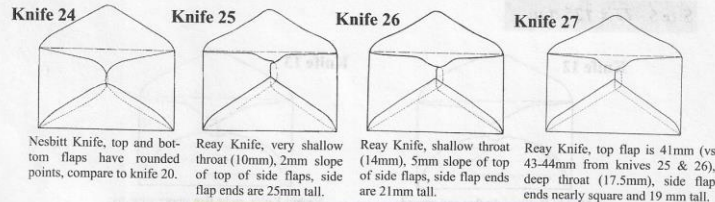
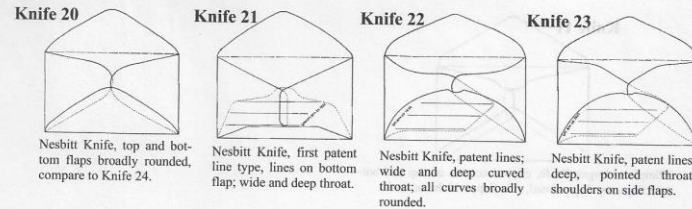


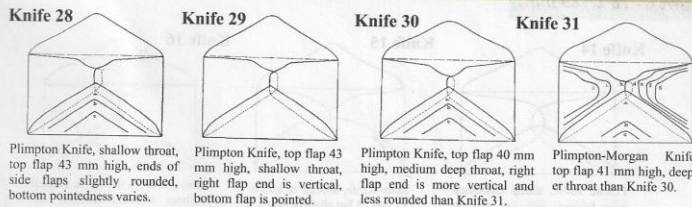
Figure 4. Typical envelope cutting knife form (die) with cutting edge on bottom, top flap of envelope at lower rear. Below, a man is laying the knife die on a pile of sheets which will be moved forward into the hydraulic press to force the knife through the pile of sheets cutting the blanks.



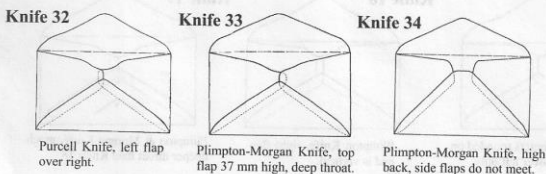
Size 7 - 83 x 139 mm



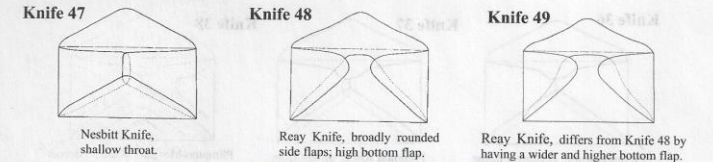
Knives 25, 26, and 27 are very similar and, perhaps, should have been combined as minor variations but are presented for historical and reference value.



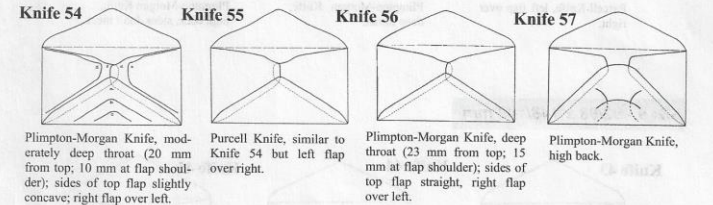
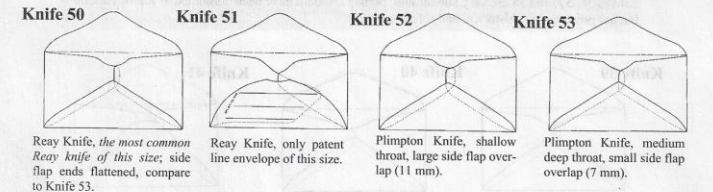
Knives 28, 29, and 30 are very similar and, perhaps, should have been combined as minor variations but are presented for historical and reference value.



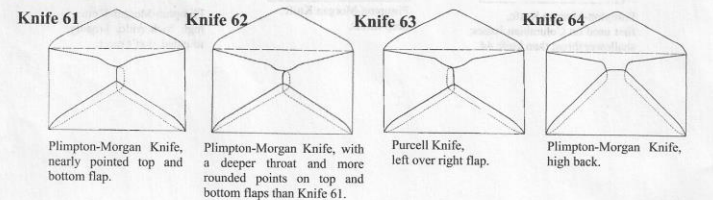
Size 10 - 87/92 x 161 mm



Knives 48 and 49 were made for use on unstamped government envelopes and were inadvertently used on some 2¢ and 3¢ envelopes; rarely found.



Size 11 - 95 x 160 mm



# Basic Catalogue

## *Scott Specialized Catalogue of United States Stamps and Covers*

Section on Stamped Envelopes and Wrappers is 31 pages (2024 edition) including reference material

Lists one entry for each indicium/color envelope  
Lists different dies with small letter

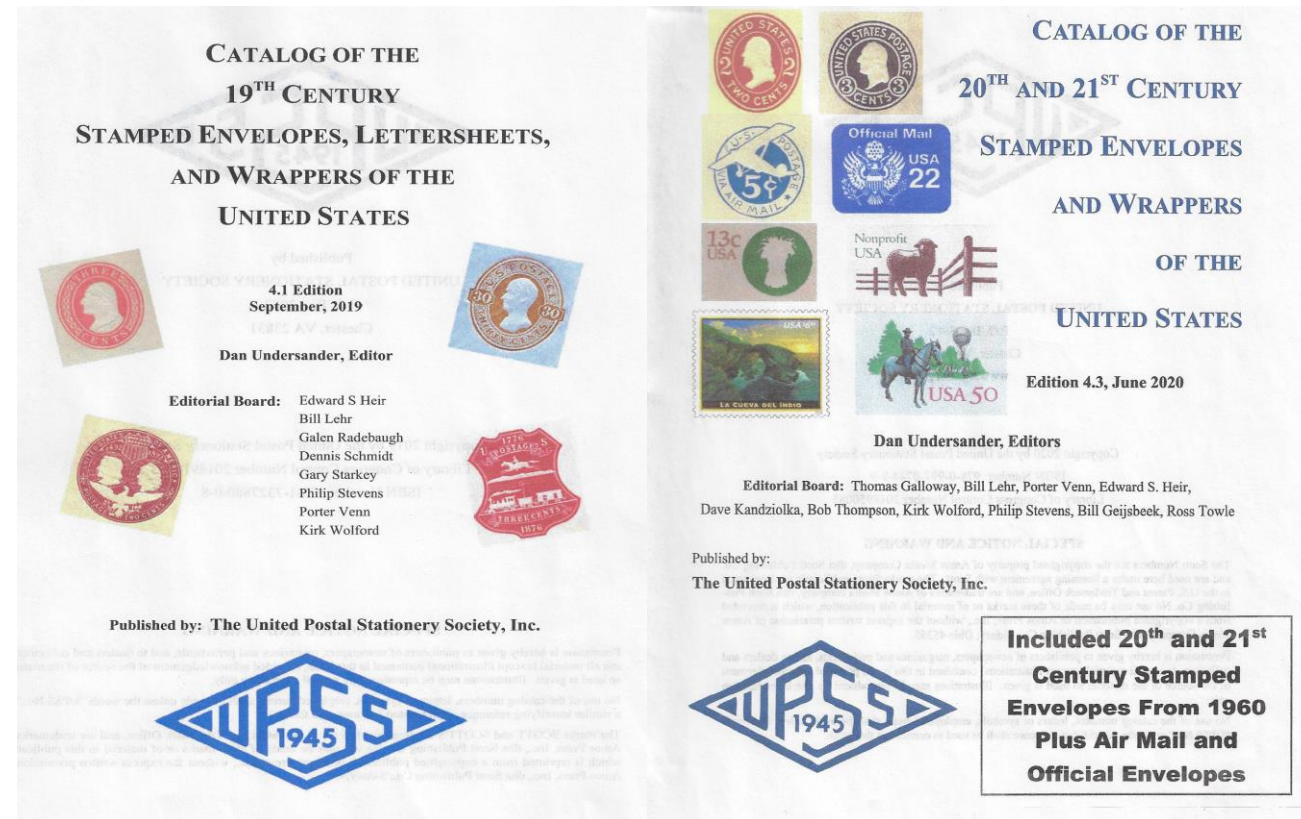
Pricing for mint and used cut square and entire  
(no separate listing for envelope size or watermark)





# More Detailed Reference That I Use

- *United Postal Stationery Society (UPSS) 2 Volume Catalogues*
  - One for 19<sup>th</sup> Century
  - Second for 20<sup>th</sup> and 21<sup>st</sup> Century
  - The 2019-2020 editions have 795 pages including many appendices of reference materials
  - Pricing for mint and used entire envelopes only
  - Breaks down each by Scott number, their number, die, color of indicium, color of envelope, watermark/recycle logo and knife





# Comparision

## **Scott's Specialized**

- Lists only 1 entry per die type/color of envelope
- 2024 edition has 24 pages
- A total of 702 unique numbers
- Basic information to identify different dies

## **UPSS Catalogues**

- Lists multiple entries per die type/color of envelope
- Additional entries include various envelope sizes and watermarks/recycle logos
- The 2019-2020 editions have 305 pages of price listings
- A total of 4035 unique numbers

# Division of Difficulty Identifying Envelopes

- This is totally my own divisions based upon my experience
- There are exceptions in each division, but the vast majority fall into each division
- Easiest to identify
  - Envelopes issued from 1960 to the present
  - Usually 1 die and easily identifiable watermark or recycle logo
- Slight challenge to identify
  - Envelopes issued from the beginning (1853) to 1919
  - Some have multiple dies but usually not hard to distinguish between them
  - Color of envelope sometimes hard to determine due to age
- Often a challenge to identify
  - Envelopes issued from 1907 to 1962
  - Relatively few new issues with many different dies of the same indicium and watermarks
  - Due to the number of envelopes produced, the dandy rolls (used to create the watermark) often wore out making it hard to determine the watermark

# Sample of a Challenging Envelope Group – U429-U432 2¢ Washington – Carmine – on 4 different colored envelopes

## **Scott Catalog**

- Has 34 entries (not including errors)
- Takes 2 columns (2/3's of a page) to list
- This includes simple identification pictures of the different dies with explanations

## **UPSS Catalog**

- Over 800 entries (not including errors)
- Takes 32 pages to list all varieties
- Differences caused by multiple dies, watermarks, sizes and knives
- Two pages in the identification section illustrate and explain differences in dies



# How Do I Catalogue an Envelope?

- Using the tools I have presented previously I fill in a wrapper strip with the information.
- Then I check to see if I have this envelope already in my album
- If not, I create an album page and mount it
- If I already have it, I add it to my duplicates box.



# How Do I Keep Track of My Inventory?

- I have created an Excel Spreadsheet with Envelopes I Have Listed

Stamped Envelopes															
Date Issue	Scott #	UPSS #	UPSS Wmk #	UPSS Knife	Description	Face	USPS Size	UPSS Size	Mint Entire	Cut Square	Entire	Mint Cut Sq Used	ArtCraft FDC	Other FDC	Cachet Maker
		1018	8	75	Washington - Green on Amber - Manila - Die 88 - Specimen	2	13	13	x		6.00				
		1019	7	100	Washington - Green on Amber - Manila - Die 88	2	7	21	x		7.00				
		1020	8	106	Washington - Green on Amber - Manila - Die 88 - Light Green	2	10	23	x		10.00		moderate		
			8	106	Washington - Green on Amber - Manila - Die 88 - Dark Green	2	10	23	x		10.00		moderate		
	U318									x	110.00				
	U319									U		27.50			
	U320									x	40.00				
unlisted	1031	12	74	Washington - Green on White - Die 88b	2	13	13	xCC			30.00		moderate		
unlisted	1032	12	31	Washington - Dark Green on Amber - Die 88b	2	3	7	x			30.00		moderate		
unlisted	1034	12	87	Washington - Green on Manila - Die 88b	2	3	7	U			20.00		moderate		
	1053	12	76	Washington - Dark Green on White - Die 90	2	13	13	U			40.00		moderate		
	1057	7	100	Washington - Green on Amber - Die 90	2	7	21	x			50.00		expensive		
	1058	7	100	Washington - Green on Oriental Buff - Die 90	2	7	21	x			50.00		expensive		
		8	100	Washington - Green on Oriental Buff - Die 90	2	7	21	x			100.00		very expensive		
	1061	7	100	Washington - Green on Manila - Die 90 - No Ear Variety	2	7	21	x			50.00		expensive		
	U324	1066	7	100	Jackson - Carmine on White - Die 91	4	7	21	x	x	25.00	3.25	moderate		
		8	100	Jackson - Carmine on White - Die 91	4	7	21	x			7.00				
		8	100	Jackson - Carmine on White - Die 91	4	7	21	x			7.00				
		12	100	Jackson - Carmine on White - Die 91	4	7	21	x			6.50				
		1068	12	106	Jackson - Carmine on White - Die 91	4	10	23	x		6.00				
	U324a	1070	8	123	Jackson - Lake on White - Die 91 - Purcell - Wells Fargo	4	9	25	x		7.50				
		1071	8	124	Jackson - Carmine on White - Die 91 - Purcell	4	9	25	x		7.00				
		8	124	Jackson - Carmine on White - Die 91 - Purcell - Wells Fargo	4	9	25	x			7.00				
		12	124	Jackson - Carmine on White - Die 91 - Purcell	4	9	25	x			7.00				
	U325	1074	7	74	Jackson - Carmine on Amber - Die 91 - Plimpton & Morgan	4	13	13	x	x	8.00	3.25			
		1075	8	100	Jackson - Carmine on Amber - Die 91 - Plimpton & Morgan	4	7	21	x		8.00				
		12	100	Jackson - Carmine on Amber - Die 91 - Plimpton & Morgan	4	7	21	x			9.00				
		8	106	Jackson - Carmine on Amber - Die 91 - Plimpton & Morgan	4	8	23	x			9.00				
		1078	7	123	Jackson - Carmine on White - Die 91 - Plimpton & Morgan	4	9	25	x		10.00		moderate		
		8	124	Jackson - Carmine on White - Die 91 - Plimpton & Morgan	4	9	25	x			10.00		moderate		

Stamped Envelopes															
Date Issue	Scott #	UPSS #	UPSS Wmk #	UPSS Knife	Description	Face	USPS Size	UPSS Size	Mint Entire	Cut Square	Entire	Mint Cut Sq Used	ArtCraft FDC	Other FDC	Cachet Maker
7/5/1976	U579	3594	47	69	Rectangle Non Profit	2.7	6 1/2	12	x	x	2.50	0.25			
		3595	47	115	Rectangle Non Profit	2.7	6 1/2	12	x		0.50		x		
			47	115	Rectangle Non Profit	2.7	10	23	x		0.50				
			48A	115	Rectangle Non Profit	2.7	10	23	x		1.00		x		
			49A	115	Rectangle Non Profit	2.7	10	23	x		1.50				
5/22/1978	U580	3610	47	89	Eagle	A	6 1/2	12	x	xU	0.80	0.40	0.25	x	
		3611	47	69w	Eagle	A	6 1/2	12	x		1.00			no FDC	
			48A	69w	Eagle	A	6 1/2	12	x		1.25				
		3612	47	115	Eagle	A	10	23	x		0.60				
			48A	115	Eagle	A	10	23	x		17.50			moderate	
			48A	115	Eagle	A	10	23	x		0.80			x	
		3613	47	115w	Eagle	A	10	23	x		2.00			no FDC	
			48A	115w	Eagle	A	10	23	x		2.50				
			49A	115w	Eagle	A	10	23	x		5.00				
6/3/1978	U581	3614	47	69	Uncle Sam - Tagging Design	15	6 1/2	12	x	xU	0.80	0.40	0.25	x	
			48A	69	Uncle Sam - Tagging Design	15	6 1/2	12	x		0.80				
			48A	69	Uncle Sam - Tagging Design	15	6 1/2	12	x		0.50				
		3615	47	69w	Uncle Sam - Tagging Design	15	6 1/2	12	x		0.75			no FDC	
			48A	69w	Uncle Sam - Tagging Design	15	6 1/2	12	x		1.00				
		3616	47	115	Uncle Sam - Tagging Design	15	10	23	x		0.75				
			48A	115	Uncle Sam - Tagging Design	15	10	23	x		0.80			x	
			48A	115	Uncle Sam - Tagging Design	15	10	23	x		0.80				
		3617	47	115w	Uncle Sam - Tagging Design	15	10	23	x		1.00			no FDC	
			48A	115w	Uncle Sam - Tagging Design	15	10	23	x		0.75				
			49A	115w	Uncle Sam - Tagging Design	15	10	23	x		3.50				
		3618	47	115w	Uncle Sam - Bar Tag Left Design	15	10	23	x		20.00				moderate
			49A	115w	Uncle Sam - Bar Tag Left Design	15	10	23	x		20.00				
10/15/1976	U582	3596	48A	69	Centennial Envelope (Shield)	13	6 1/2	12		xU	0.35	0.25			
			49A	69	Centennial Envelope (Shield)	13	6 1/2	12	x		0.75			xblack	
			49A	69	Centennial Envelope (Shield)	13	6 1/2	12	#					xcolor	
		3596a	49A	69	Centennial Envelope (Shield)	13	6 1/2	12							
		3597	47	115	Centennial Envelope (Shield)	13	10	23	x		1.50			x	
			48A	115	Centennial Envelope (Shield)	13	10	23	x		3.00			x	No Cachet
			49A	115	Centennial Envelope (Shield)	13	10	23	x		1.00				
4/7/1977	U583	3598	49A	69	Golf	13	6 1/2	12	x	xU	0.75	0.65	0.25	x	
		3599	49A	69w	Golf	13	6 1/2	12	x		1.00			no FDC	
		3600	48A	115	Golf	13	10	23	x		1.00				
			48A	115	Golf	13	10	23	x		0.75				
		3601	48A	115w	Golf	13	10	23	x		1.00			no FDC	
		3602	49A	69	Energy Conservation	13	6 1/2	12	x	xU	0.80	0.45	0.25	x	
10/20/1977	U584	3603	49A	69w	Energy Conservation	13	6 1/2	12	x		1.00			no FDC	
		3604	49A	115	Energy Conservation	13	10	23	x		0.80			x	
		3605	48A	115w	Energy Conservation	13	10	23	x		1.00			no FDC	
		3606	49A	69	Energy Development	13	6 1/2	12	x	xU	0.60			x	
10/20/1977	U585	3607	49A	69w	Energy Development	13	6 1/2	12	x		1.00	0.45	0.25	no FDC	
		3608	49A	115	Energy Development	13	10	23	x		0.80			x	
		3609	49A	115w	Energy Development	13	10	23	x		1.00			no FDC	
7/28/1978	U586	3619	47	69	Olive Branch & Star Revalued	15(16)	6 1/2	12	x	xU	0.75	0.40	0.25	x	
			48A	69	Olive Branch & Star Revalued	15(16)	6 1/2	12	x		0.75				
			48A	69	Olive Branch & Star Revalued	15(16)	6 1/2	12	x		1.00				
		3620	47	69w	Olive Branch & Star Revalued	15(16)	6 1/2	12	x		3.50			no FDC	
			48A	69w	Olive Branch & Star Revalued	15(16)	6 1/2	12	x		0.75				
			49A	69w	Olive Branch & Star Revalued	15(16)	6 1/2	12	x		0.75				
		3621	47	115	Olive Branch & Star Revalued	15(16)	10	23	x		0.75			x	



This is a picture of one of my book cases which houses just my basic stamped envelope collection. The 3-ring notebooks being passed around came from this book case.





The End

Any Questions?