

Back of the Book Scott's Second Letter and Other Non-Scott Categories

By Newt Kulp
Central Florida Stamp Club
March 19, 2026

Presentation Will Be in Two Parts

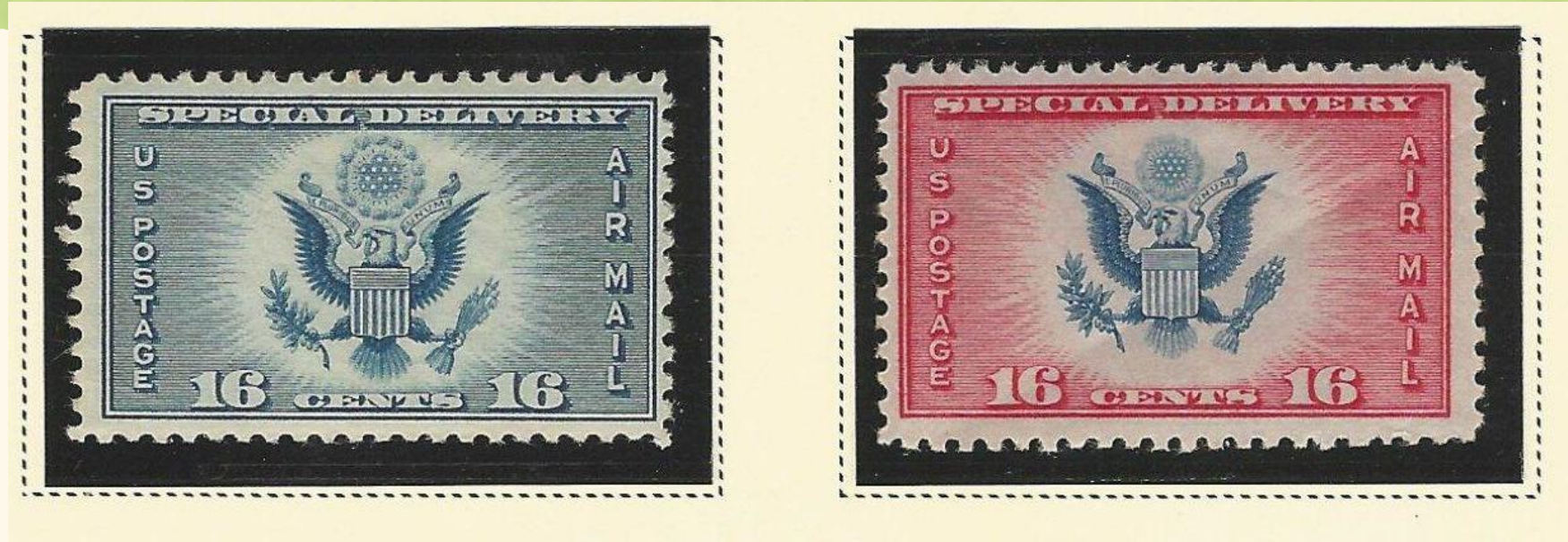
Part 1 – Examples of Scott Listed Categories

Part 2 – Examples of Non-Scott Listed (Not in Specialized Catalogue)

Review of Scott's First Letter Usage

- B – Semi-Postals
- C – Airmail
- E – Special Delivery
- F – Registration
- J – Postage Due
- K – Offices in China
- L – Local
- O – Officials
- P – Postal Money
- Q – Parcel Post
- R – Revenues/Documentary
- S – Savings
- T – Telegraph
- U – Envelopes
- W – Wrappers
- X – Postmaster Provisionals

CE – Air Post Special Delivery



Air Post Special Delivery

CE – Only 2 Stamps

F - Registration

FA - Certified Mail –
Only 1 Stamp

FX - Registry Exchange
Labels – Not to be
shown – numbered via
City of Origin – Most
expensive and up

CERTIFIED MAIL

1955



O – Officials – Many Types as Listed

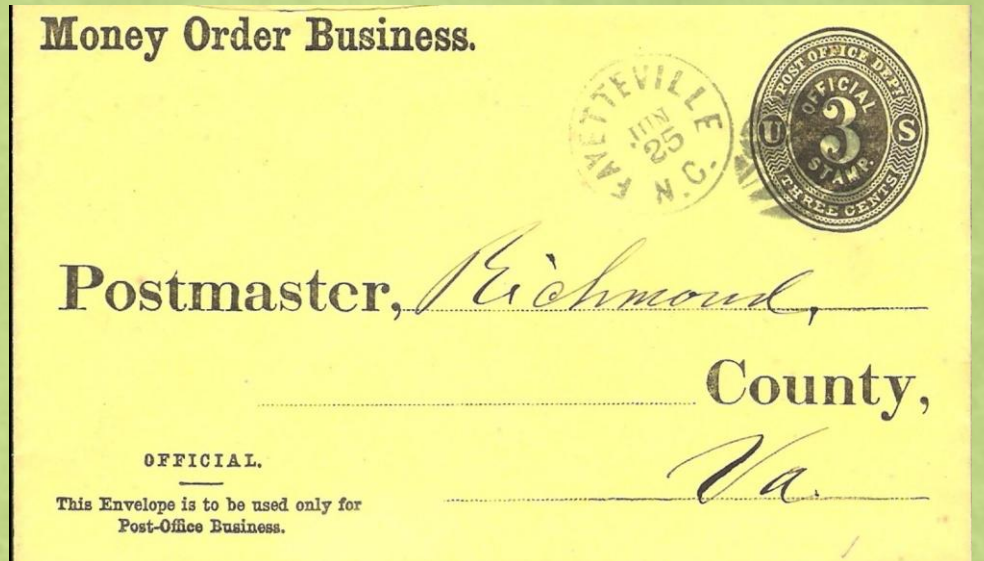
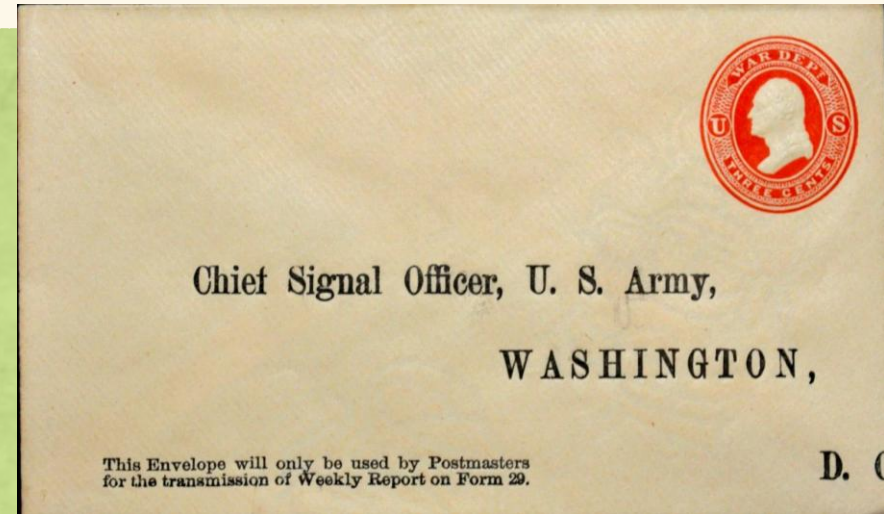
- Stamps by Cabinet Department – to 1879
 - Agriculture
 - Executive
 - Interior
 - Justice
 - Navy
 - Post Office
 - State
 - Treasury
 - War
- Other Categories
 - Official Mail – After 1983
 - Official Postal Savings
 - OX – Seals
 - UO – Envelopes
 - WO – Wrappers
 - UZ – Postal Cards
 - O#S – Special Printing – 1875
 - The # indicates a sequence number which were assigned to the Cabinet Department for which the stamp was issued (i.e. 83-93 for War Department)

Officials From 1873 to 1875

- Stamps

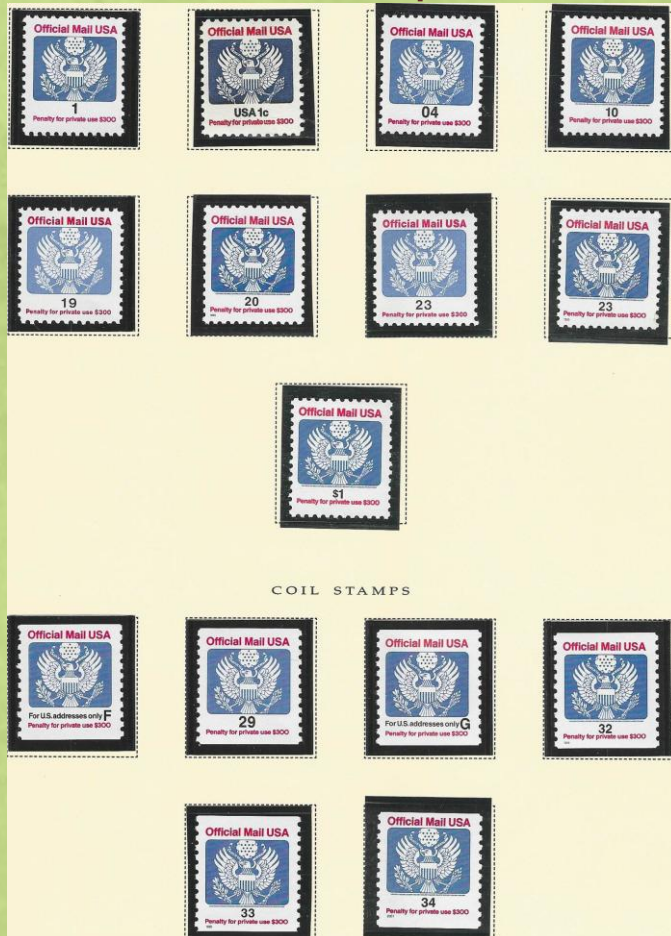


- Envelopes

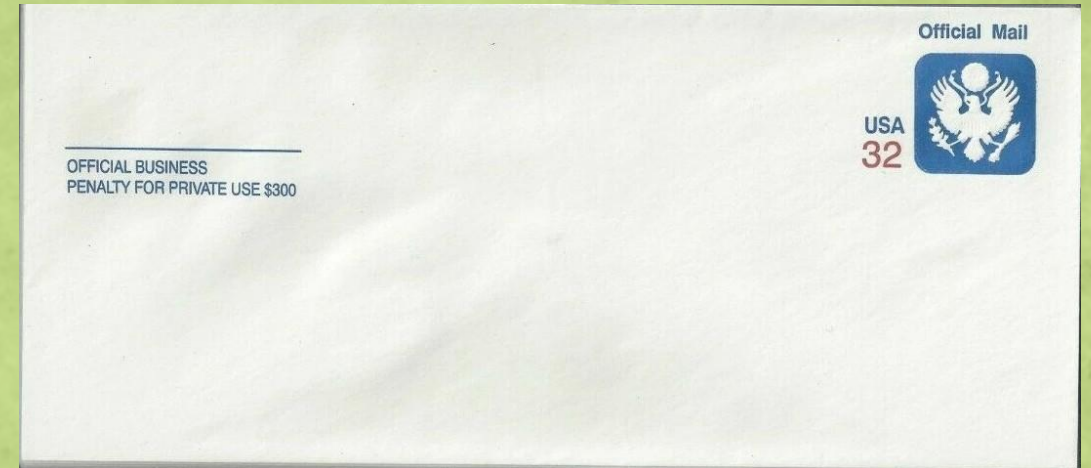


Officials 1983 to 2010

- Stamps



- Envelopes and Postal Cards



P - Postal Money

- PC – Postal Currency
- PN – Postal Notes
- PS – Postal Savings



Q – Parcel Post

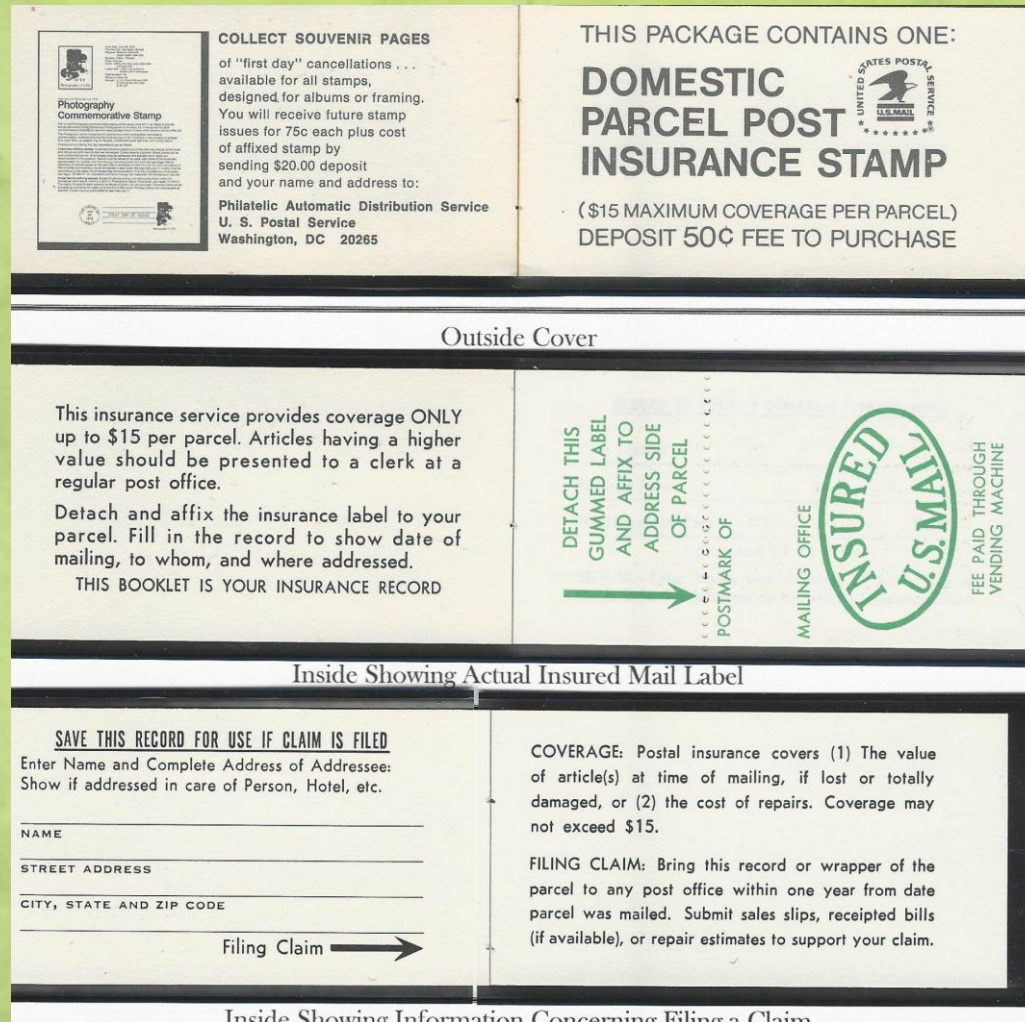
QE – Special Handling

QI – Postal Insurance

JQ – Parcel Post
Postage Due



QI - Postal Insurance



- Issued in booklet form – 1 insurance “policy” per booklet
- Left shows the 3 parts of the booklet

T - TELEGRAPH

- Technically used as a second entry in the catalog number
- First entry was a number which was assigned to a company
 - 1 for American Rapid Telegraph Company to 17 for Telegraph-Cable-Radio Carriers
 - Most common and largest number of identifiable entries was the number 16 assigned to Western Union
 - There are 115 different Western Union Telegraph Stamps
- Second entry was the letter "T"
- Third entry was the sequence number

Two Examples of Telegraph Stamps

- American Telegraph



- Western Union



U & W – Envelopes and Wrappers

Envelopes

- UO – Official Envelopes
- UX – Postal Cards
- UY – Reply Cards
- UZ – Official Postal Cards

Wrappers

- W – Regular Wrappers
- WO – Official Wrappers

X – Postmasters' Provisionals

XU – Postmasters' Provisionals Envelopes

Local Postmasters created handstamps that were applied to envelopes to indicate that the amount due was pre-paid at the point of origin. Each office created a unique and identifiable "logo" showing from which post office the envelope originated. A few rare examples exist where a postmaster had envelopes printed with such a indicum.

I do not own any examples of these categories since their catalog values are from hundreds to hundred of thousands of dollars.

They are numbered like the telegraph stamps with a number (indicating the City – total of **11**), the letter X followed by a sequential number.

R - Revenue

- Largest non-postage group
- Almost every letter is used as a second letter to designate the revenue topic
- Will only illustrate a few from my collection
 - RI – Potato Tax
 - RM – Embossed Revenue Stamped Paper
 - RZ – Rectification Tax
 - RE – Wines and Cordials
 - RW – Duck Hunting

RE – Wines and Cordials

Small Wine Samples



Larger Wine Samples



RI - POTATO TAX STAMPS

Tax Paid – 13 stamps – full set illustrated below - Issued in sheets of 50



Tax Exempt – 5 stamps – Issued in panes of 12 bound in booklets (rarely found and expensive) of 24, 96 and 192 stamps



RM - Embossed Revenue Stamped Paper



- Used in the pre-stamp period to officially show that a tax was paid.
- Mostly issued by states with a few examples at the federal level.
- Scott lists example from 1757 to 1856
- The center usually shows the amount paid – range from 4¢ to about \$6 with a few higher
- Pre-1766 stamps in British currency
- At left are examples from Maryland used between 1845 and 1856

RW - Ducks



The U.S. Fish & Wildlife Service

2008-2009
Migratory Bird
Hunting & Conservation Stamp
75th Anniversary

Artist: Joseph Hautman
Northern Pintails



Peel Here

If applicable, sign, peel, and attach to hunting license.



Certificate of Appreciation



The U.S. Fish and Wildlife Service Thanks You for Buying Duck Stamps and Putting Your Stamp on Conservation

With each Federal Duck Stamp you purchase, you're buying considerably more than just a beautiful work of art by one of America's outstanding wildlife artists. You're helping to conserve acres of wetland habitat necessary for healthy and sustainable waterfowl populations and also the enjoyment of people. Since 1934, thanks to collectors like you, we've used \$750 million generated by Duck Stamps sales to protect more than 5.2 million acres of waterfowl habitat at hundreds of national wildlife refuges. In addition, Junior Duck Stamp sales support environmental education programs and awards for all American schoolchildren. In 2008, nearly 30,000 students from kindergarten through high school participated in the Junior Duck Stamp conservation education program now in its second decade.



H. Dale Hall
Director
U.S. Fish and Wildlife Service

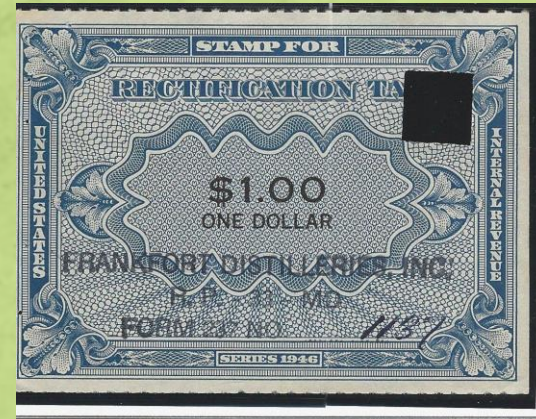


PROMOTING CONSERVATION THROUGH THE ARTS

28,000 PRINTED

RZ - Rectification Tax

- Used to show that an additional tax was paid on liquor blended or further distilled to enhance the product
- The square hole in the top stamp indicated that the item it was attached to had been inspected and tax paid
- Most stamps simply were stamped and signed (bottom)



Based on historical regulatory records, federal rectification spirits has traditionally cents (\$0.30) per proof. This tax was levied to the standard excise distilled spirits and were rectified, purified, refined, or mixed in a manner that the product so was considered a

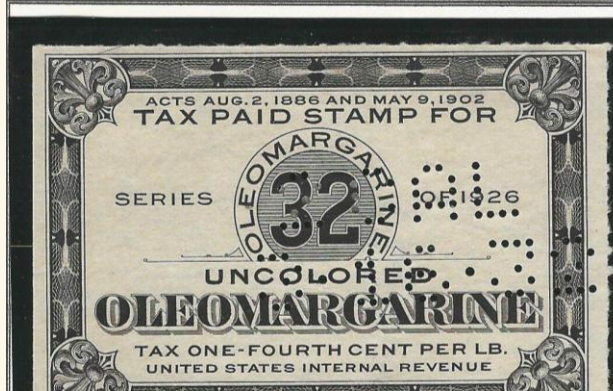
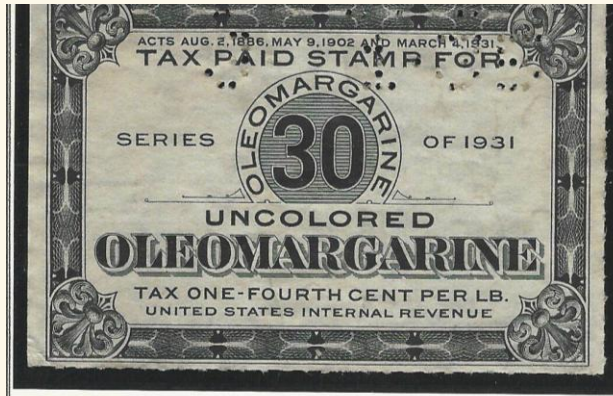


A Few Non-Scott Listed Items

Items Associated with Revenues

- Oleomargarine
- Distillery Warehouse Tax
- Special Occupational Tax

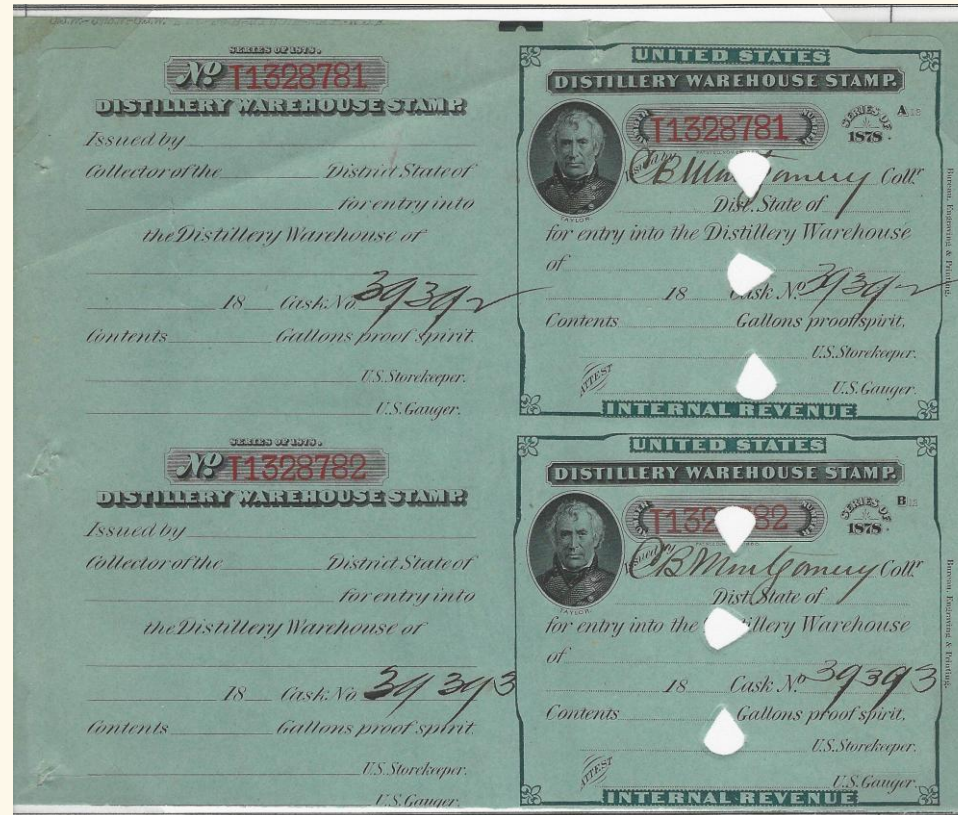
Oleomargarine



Stamps were put on cases of oleomargarine that were shipped in various weights and either were uncolored or colored. To the left are stamps for 30 and 32 pound uncolored and a vertical pair of 12-pound colored

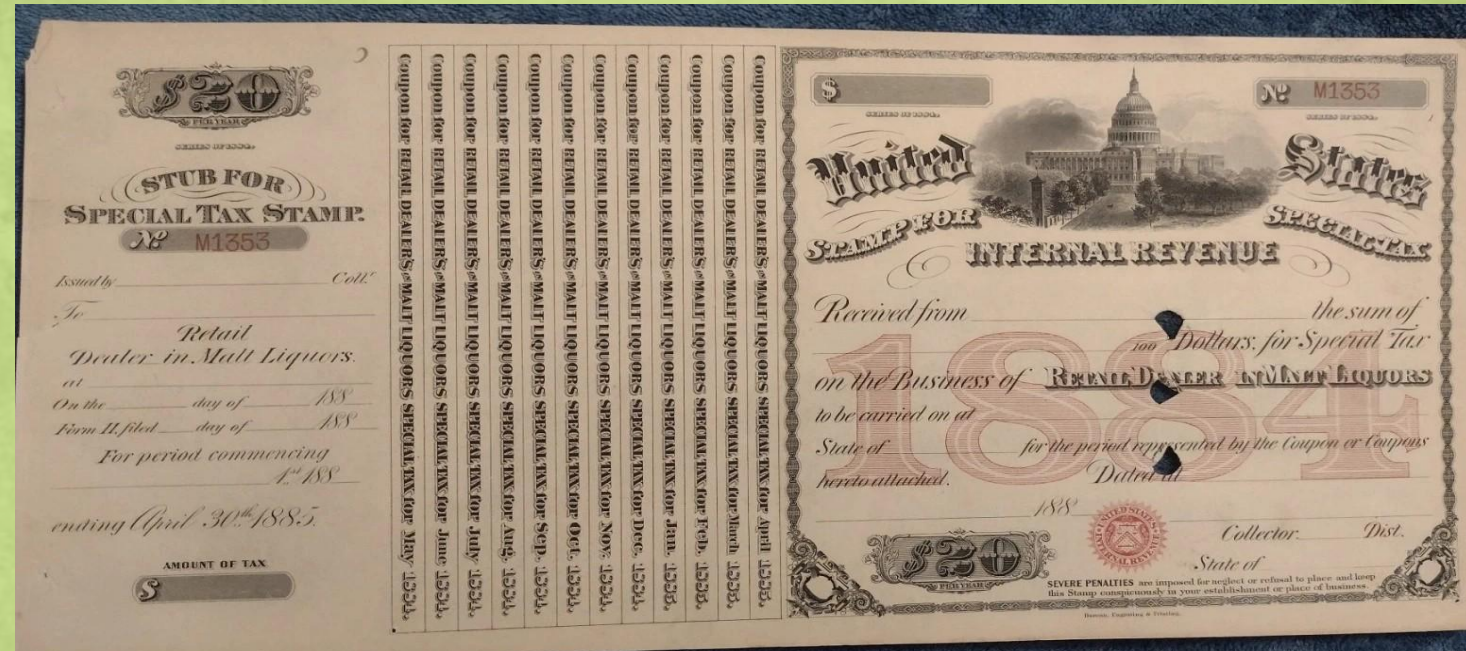
Distillery Warehouse Tax

- Primarily issued between 1873 and 1885.
- Used to track and tax spirits stored in bonded warehouses.
- These large, ornate, engraved documents featured a portrait of Zachary Taylor



SPECIAL OCCUPATIONAL TAX

- Large size certificates from 1873 to 1885 (as shown right).
- Some classifications were taxed to 1960's
- Licensed certain businesses and occupations at federal level
 - Retail and wholesale liquor dealers
 - Operators of stills
 - Retail and wholesale tobacco dealers
 - Cigar makers and dealers
 - Various types of peddlers
 - Opium products dealers
 - Owners of pleasure boats, coin-operated amusement devices, billiards halls, bowling alleys and others



THE END