

Transports C25-C31

A little of this and a little of that.....

F. Ferguson 04.2026

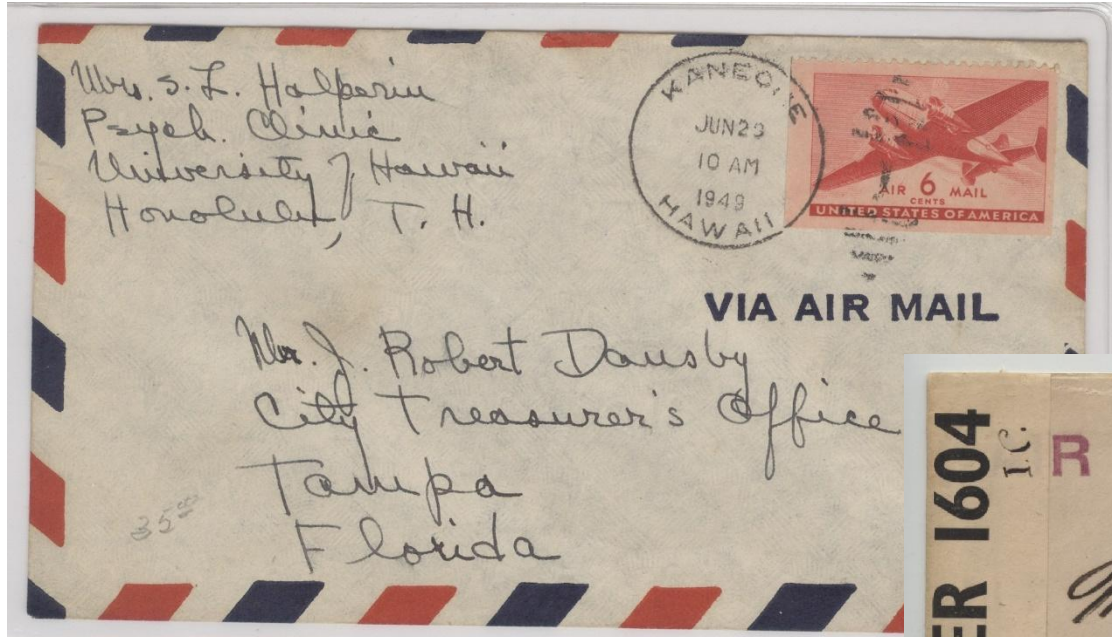
THE TRANSPORTS



by
G.H. Davis

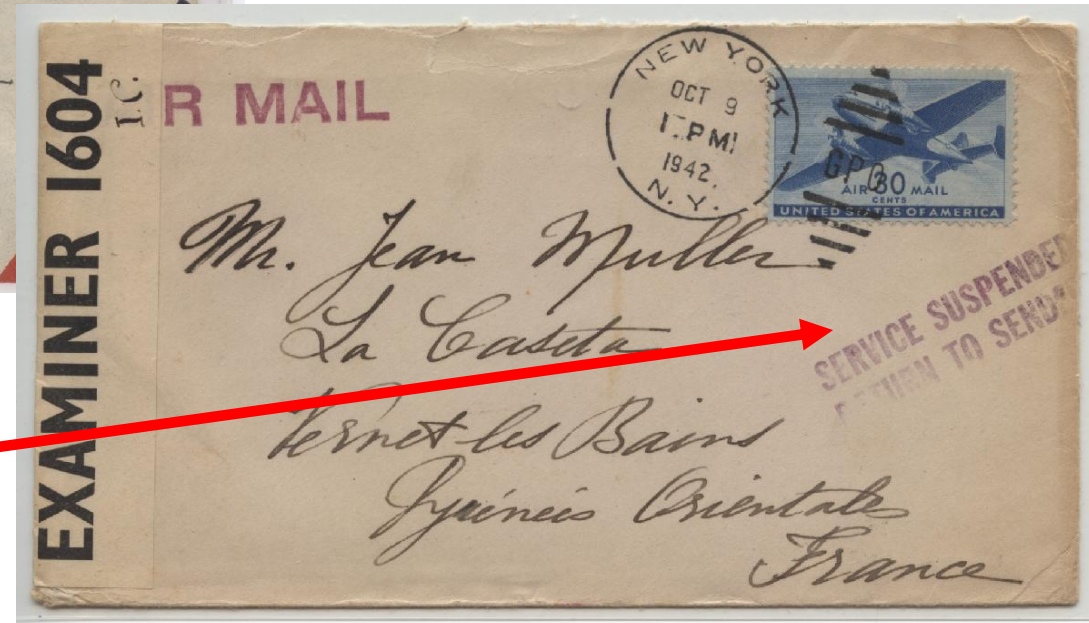
**The
Reference
Bible for
Transports
<<1999**

How it all started.....



A cover like this was what I first saw as a youngster. From my father in San Diego to my mother in Clark Mills, NY.

Service
Suspended
10.09.42 TO
FRANCE



The Details.....

Name	Scotts	Printing Qty	Color	Plates
6 cent	C25	4.75 billion	Red	40
8 cent	C26	1.74 billion	Olive	22
10 cent	C27	67.1 million	Purple	4
15 cent	C28	78.4 million	Brown	2
20 cent	C29	42.4 million	Green	2
30 cent	C30	59.9 million	Blue	2
50 cent	C31	11.2 million	Orange	2
		6,750,358,850		74 plates / 296 All positions

Transport Series – Singles



This work horse of a series of seven stamps served to take United States mail around the globe. Had there been inter-planetary travel during that time period -- who knows what may have occurred! Every value saw a wide variety of usage from domestic to foreign ports of call. While roughly 6.750 billion of these stamps were produced, the average centering of the vast majority of the production is very evident. The truly wonderful look of an exceptionally well centered set, mint or used, is very special.



Transport Series – Blocks of Four



Transport Series – 6 Cent Matched Plates



Upper & Lower
Left

This is the lowest value in the Transport Series with a printing total of 4.75 billion.

A total of 40 plates from #22752 to #23349 were used from June 2, 1941 until final production on December 4, 1959.

Upper & Lower
Right

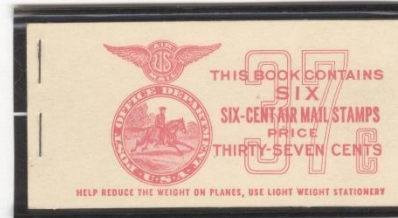


Transport Series – 6 Cent Booklets

With a printing quantity of 3,753, 186 sheets that contained 180 subjects (60 panes) there is a significant volume of material produced.

SIX-6c AIR MAIL STAMPS

These stamps are valid for use on air mail matter only, but they may be used in the payment of registry, insured, and C.O.D. fees on air mail.



Complete Booklet BC10, 37 cents.

TWELVE-6c AIR MAIL STAMPS

Air mail stamps are valid for use on air mail matter only.



Complete Booklet BC10, 73 cents.



The 37 cent book is composed of 2 panes like the one to the left, while the 73 cent has 4 panes.

Transport Series – 8 Cent Matched Plates



Upper & Lower
Left

This is the second lowest value in the Transport Series with a printing total of 1.74 billion.

A total of 22 plates from #23121 to #23357 were used from March 1, 1944 until final production on December 31, 1948.

Four additional plates 23431, 23432, 23441, and 23442 are noted, but none are known to exist.

Upper & Lower
Right



Transport Series – 10 Cent Matched Plates



Upper & Lower
Left

This is the third value in the Transport Series, with a printing total of 67.1 million.

A total of 4 plates from #22756 to #22759 were used from June 9, 1941 until final production on December 31, 1948.

The last two plate numbers have a very low number of impressions; with only 12,050 -- making them relatively difficult to locate.

Upper & Lower
Right



Transport Series – 15 Cent Matched Plates



Upper & Lower
Left

The fourth value in the
Transport Series, with a
printing total of 78.4
million.

A total of 4 plates from
#22764 to #22767 were
used from June 2, 1941
until final production on
December 31, 1948.

The last two plate numbers
have an extremely low
number of impressions;
with only 7,600 -- making
them the toughest of all
plate numbers to obtain.

Upper & Lower
Right



Transport Series – 20 Cent Matched Plates



Upper & Lower
Left

The fifth value in the
Transport Series, with
a printing total of 42.4
million.

Only 2 plates #22760
& #22761 were used
from June 2, 1941
until final production
on December 31,
1948.

Two additional plates
#22762 & #22763 are
noted, but none are
known to exist.

Upper & Lower
Right



Transport Series – 30 Cent Matched Plates



Upper & Lower
Left

The second highest value in the Transport Series, with a printing total of 59.9 million.

Only 2 plates #22774 & #22775 were used from June 23, 1941 until final production on June 28, 1950.

Two additional plates #22776 & #22777 are noted, but none are known to exist.

Upper & Lower
Right



Transport Series – 50 Cent Matched Plates



Upper & Lower
Left

The highest value in
the Transport Series,
with a printing total of
11.2 million.

Only 2 plates #22778
& #22779 were used
from July 29, 1941
until final production
on December 28,
1959.

Two additional plates
#22780 & #22781 are
noted, but none are
known to exist.

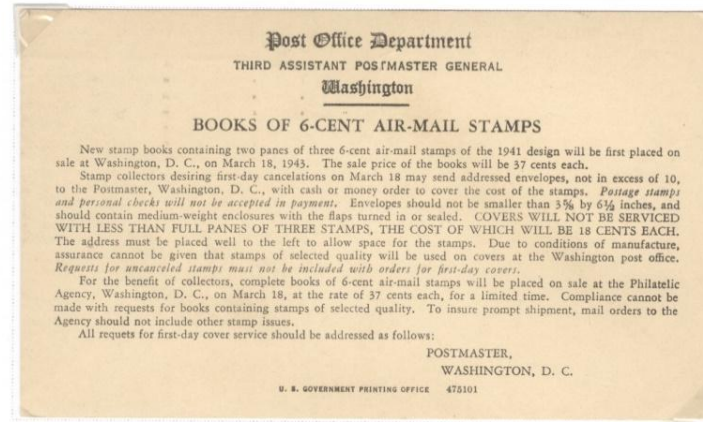
Upper & Lower
Right



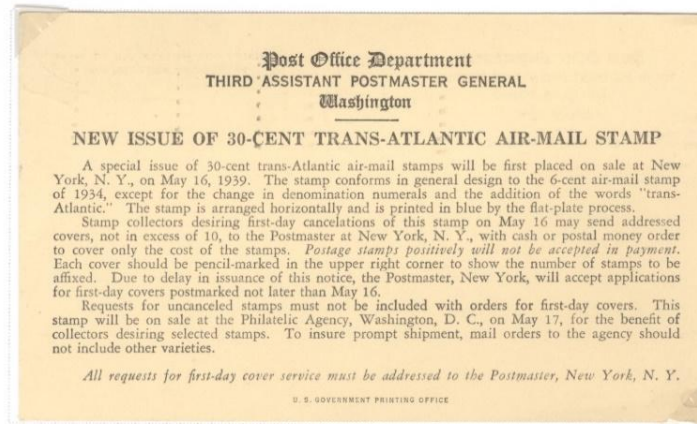
Odd Stuff

What can one find?

Transport Series –EFO material First Day of Issue Announcement Cards



These announcement cards were sent out by the Post Office Department to alert the local post offices of the impending arrival of new issues. These cards are surprisingly cheap – and very tough to find. The disposable nature – meant a great deal of them where tossed out. The top card is for the 6 cent booklet released on March 18, 1943 (mailed on February 19) while the card below is for the 30 cent stamp to be released on May 16, 1939 (mailed May 12).



Transport Series – Plate Singles – Used



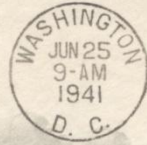
Transport Series – Plate Blocks -- Used



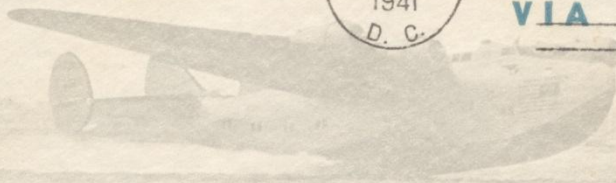
First Day Covers

This is fun!

NEW
AIR MAIL
SERIES



—FIRST DAY OF ISSUE—
VIA AIR MAIL



Theodore Waxberg
1664 Lopham Avenue
New York, 53, N. Y.



—FIRST DAY OF ISSUE—

Mrs. Ruth E. Walker
420 Genesee Ave;
Warren, Ohio.

AIR MAIL



FIRST DAY COVER FROM WASHINGTON, D.C.

WASHINGTON MAR. 18 9:00 AM 1943 D. C.

W.J. Ramsey P.O. Box 183 Glenbrook, Conn.



C-25a-41 2502

FIRST DAY 6c AIR MAIL

Booklet Pane Stamp Issue Washington, D. C.



WASHINGTON MAR. 18 9:00 AM 1943



AIR MAIL

SPECIAL DELIVERY

Leon G. Tedesche, Inc. Box 1, Station F Cincinnati, Ohio

Cincinnati, Ohio



WASHINGTON
MAR 21
9-AM
1944
D. C.



—FIRST DAY OF ISSUE—

1st Lt. William H. Weigand
AES #1, USMCAS,
Quantico, Va.





AIRMAIL

NEW ISSUE

1941

SERIES



VIA AIR MAIL

M. G. Thomas,
Waterloo,
Wisconsin.

AMERICAN AIR MAIL SOCIETY



**TWELFTH ANNUAL CONVENTION
HOTEL CLARIDGE • AUG • 15-17 • 1941**

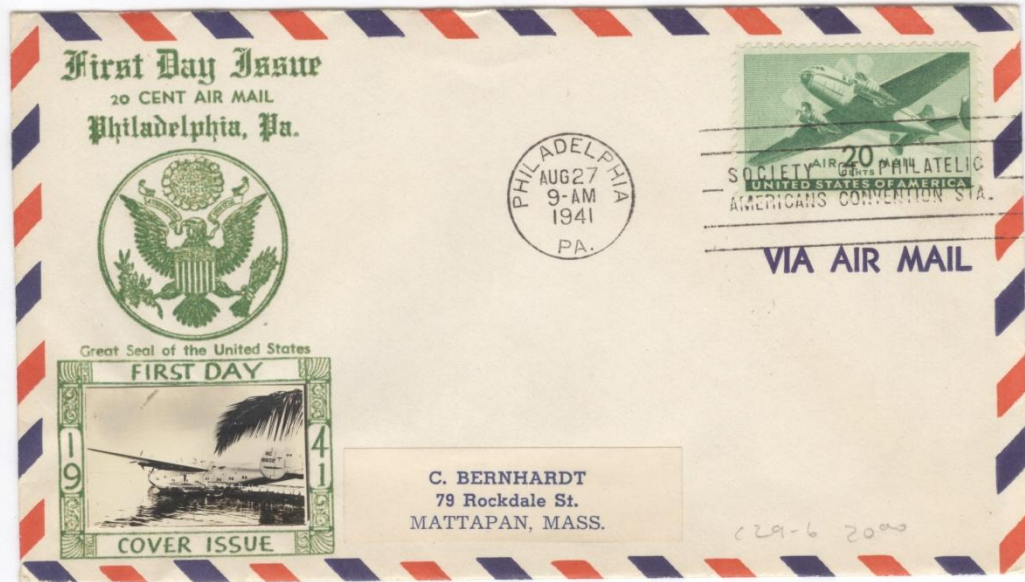
FIRST DAY 10c AIR MAIL STAMP



STATION

VIA AIR MAIL







DEVELOPMENT
OF
**UNITED STATES
AIR MAIL**

WASHINGTON TO NEW YORK - 1918
CHICAGO TO NEW YORK - 1919
TRANS-CONTINENTAL SERVICE - 1920
U.S. TO SOUTH AMERICA - 1930
TRANS-PACIFIC AIR MAIL - 1935
TRANS-ATLANTIC AIR MAIL - 1939

© STEPHEN ANDERSON



TRANS-MISSISSIPPI PHILATELIC
SOCIETY CONVENTION STA.

UNCLAIMED

Mr. Harry Tyers
S. S. Kaimoko
Isthmian Steamship Co.
San Francisco, California

SEAMEN'S UNIT FERRY POST OFFICE

1941 AIRMAIL SERIES



TRANS-MISSISSIPPI PHILATELIC
SOCIETY CONVENTION STA.

*Lunna Fohler,
19 Warren St.,
Minden, Conn.*



VIA AIR MAIL

M. Brill
888 So. 20th St.
Newark, New Jersey



Mr. Louis B. Fairbanks,
Bainbridge,
New York.

AIR 50 MAIL
CENTS

Jaw Morgan

NEW REGULAR
AIRMAIL SERIES



WILBUR WRIGHT ORVILLE WRIGHT

WRIGHT BROTHERS' FIRST SUCCESSFUL
AIR PLANE FLYING AT KITTY HAWK
NORTH CAROLINA, DECEMBER 17, 1903

First Day of Issue

20



4979 H. Walter Leavitt
7 Park Street
Orono
Maine

SPECIAL DELIVERY REGISTERED

NEW REGULAR
AIRMAIL SERIES

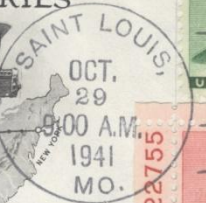


JACK KNIGHT
PILOT

THE FIRST COAST TO COAST AIRWAY
WAS STARTED IN 1921

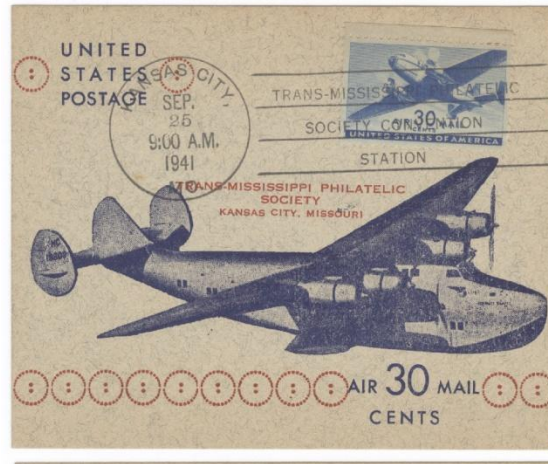
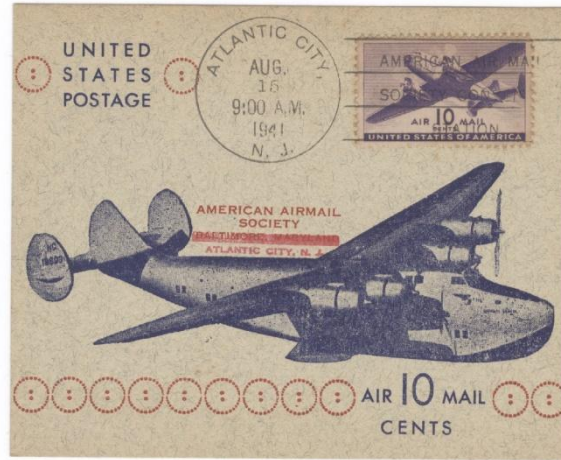
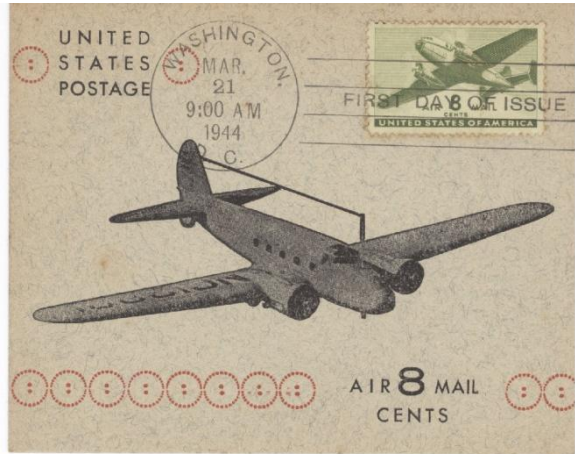
First Day of Issue

20



4888 H. Walter Leavitt
7 Park Street
Orono
Maine

SPECIAL DELIVERY REGISTERED



Dorothy Knapp



C25a & C26





Dorothy Knapp

C27 & C30



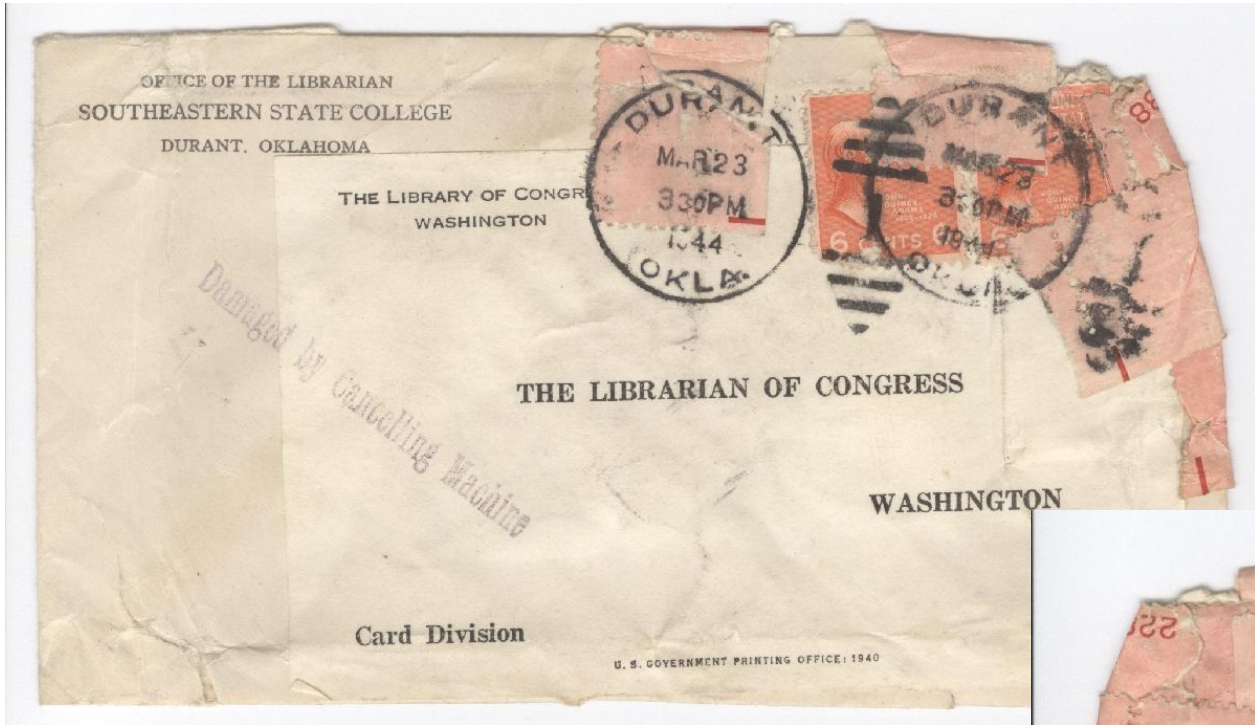
Dorothy Knapp



C31

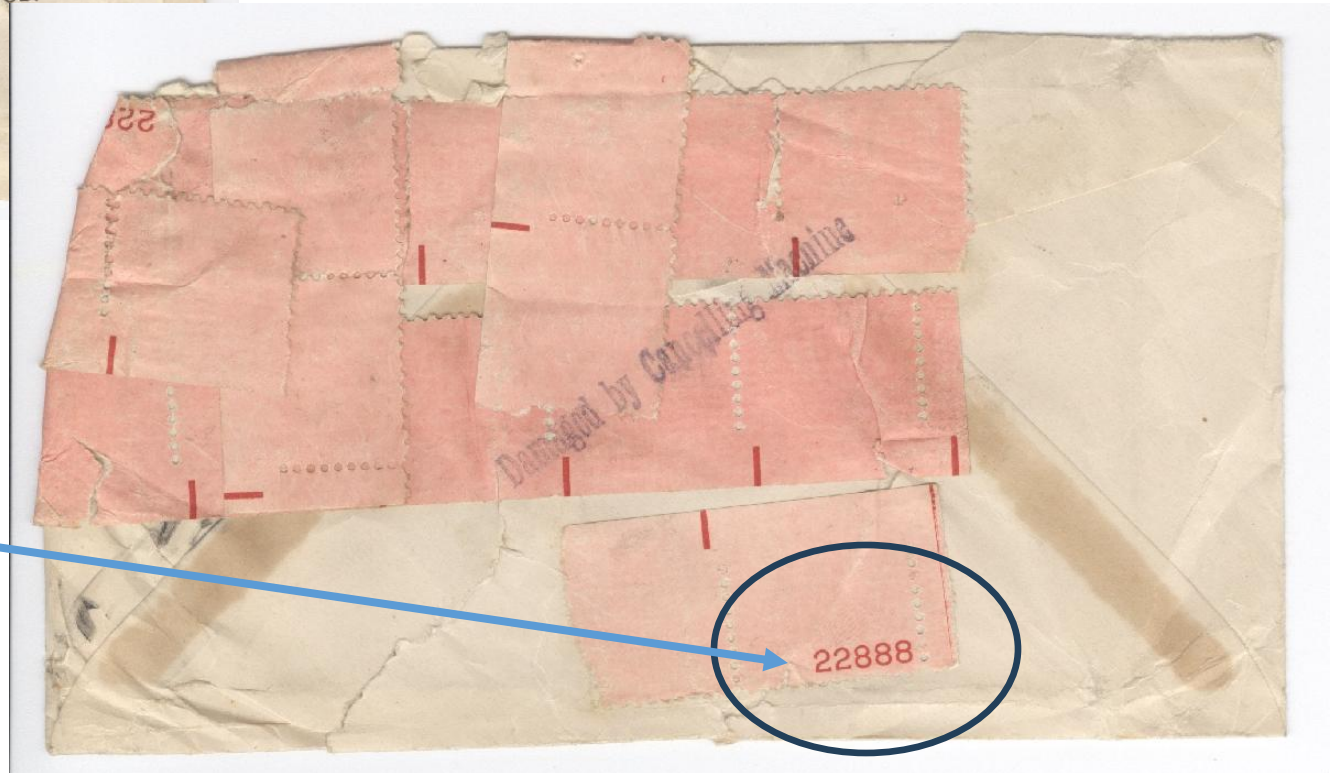
Postal History

What is that?



**Ugly – that is
the only thing
you can say!**

A Cover Dealer who knows
of my interest in Transports
saved this for me.



Philatelic in Nature? I would guess yes!



EXAMINED BY



INDIANAPOLIS IN
1942
CALIF.

VIA AIR MAIL

MR. HENRY SCOTT,
BOX 1696,
BALBOA,
CANAL ZONE.

OAKLAND
JUN 15
12 M
1942
CALIF.

6

OPENED BY

UNITED STATES ARMY.

Letter must not be used for money or valuables; cannot be registered, and will not be censored by company or postal censors, but by the Base Censor.

Verify that the inclosed letter or letters were written by me, and only to personal or family matters, and do not refer to other matters forbidden by censorship regulations.

CPL. WM. E. DALTON 35354984
Grade and signature of writer.

1489 M. CO. SER. GP (AVN)
Organization address.

A.P.O. No. 634 New York City.

MS
RECEIVED BY
SER. GP
ARMY
NOV 20 1942

SOLDIER'S

Blue Envelope
DEC 20
A.M.
1942



If more than one letter inclosed, address this envelope to : -
BASE CENSOR, U. S. ARMY.

MR. S CHAS. K. PALMER
4410 BARING AVE.
EAST CHICAGO
INDIANA
U.S.A.

HONOLULU, HAWAII
AUG 20



Miss Helen Walker
3934 N. Stowell Ave.
Milwaukee, Wisconsin.
(Please Forward) *[Signature]*

UNIVERSAL WINDING COMPANY

P. O. BOX 1605

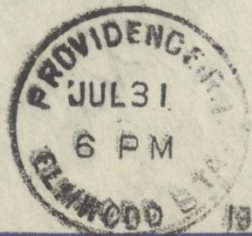
PROVIDENCE, R.I.

LEESONA
REG. U.S. PAT. OFFICE



41

MR ROBERTO ZANDER
345 JUAN JAURES 347
BUENOS AIRES
ARGENTINA S A



PAR  AVION

A
J. W. Hughan
27 Pierrepont Street
Brooklyn 2 NY



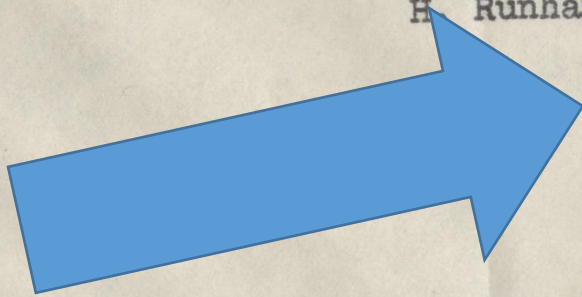
VIA AIR MAIL

H Runham Brown

11 Abbey Road

Enfield, Middlesex,

ENGLAND.



FRANCIS T. NAPIER
3350½ Imperial Highway
LYNWOOD, CALIFORNIA



AIRMAIL

ex A. 9015
L Klein
16 Okeover Manor
North Side
London SW 4, ENGLAND

*Mr. Frank Kolos Sr.
0-218721
Hq + Hq Det. Sect I.
Camp Sibert. ALA.
USA.*



*International Red Cross
Geneva.
Switzerland*

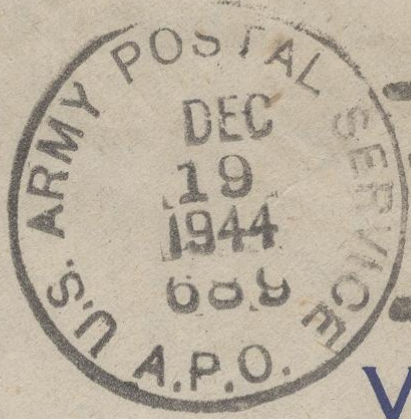


Returned for Additional Postage



AFTER FIVE DAYS RETURN TO

T/Sgt. W. N. Henry - 14026955
8.8th Ltr Sqdn.
A.P.O. 689 4/0 P. M., N.Y.



VIA AIR MAIL

Miss Natalie S. Henry
218 East Huron St.
Chicago, Illinois
U. S. A.

PASSED BY
J 13275
ARMY EXAMINER

1 stamp
IMPERF.
MERT. ?

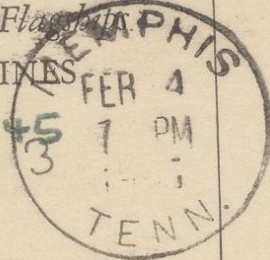


En route to San Francisco
Volando Por la Ruta de los "Flagships"

In Flight, Route of the Flagships

AMERICAN AIRLINES

14 February 1945



I

POSTAGE



Dear Folks -

Finally got away from La Guardia field at 7 A.M. today, travelling on high war department priority. Am due in Frisco Wednesday morning via Texas, New Mexico, Arizona and Los Angeles.

Si, los "Flagships" también vuelan a México. Excelente servicio a la Ciudad de México y Monterrey.

Yes! Flagships Fly down Mexico Way—excellent service to Mexico City and Monterrey.

Done got away safely. Love. Bob

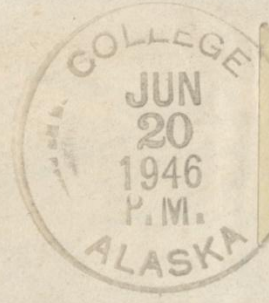
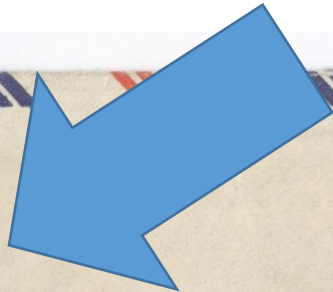
Mr. and Mrs. F. A. Burlingame

Eldora

Iowa

Air mail

T-150A PRINTED IN U.S.A.



Hugh & Brandt -
College -
Alaska

Dean and Mrs. C. M. Pinfrock.
Oak Road -
Cleveland Heights -
Ohio.

Territorial Use



EXAMINED BY

A. H. RIISE

ST. THOMAS APOTHECARY HALL
ST. THOMAS, V. I., U. S. A.



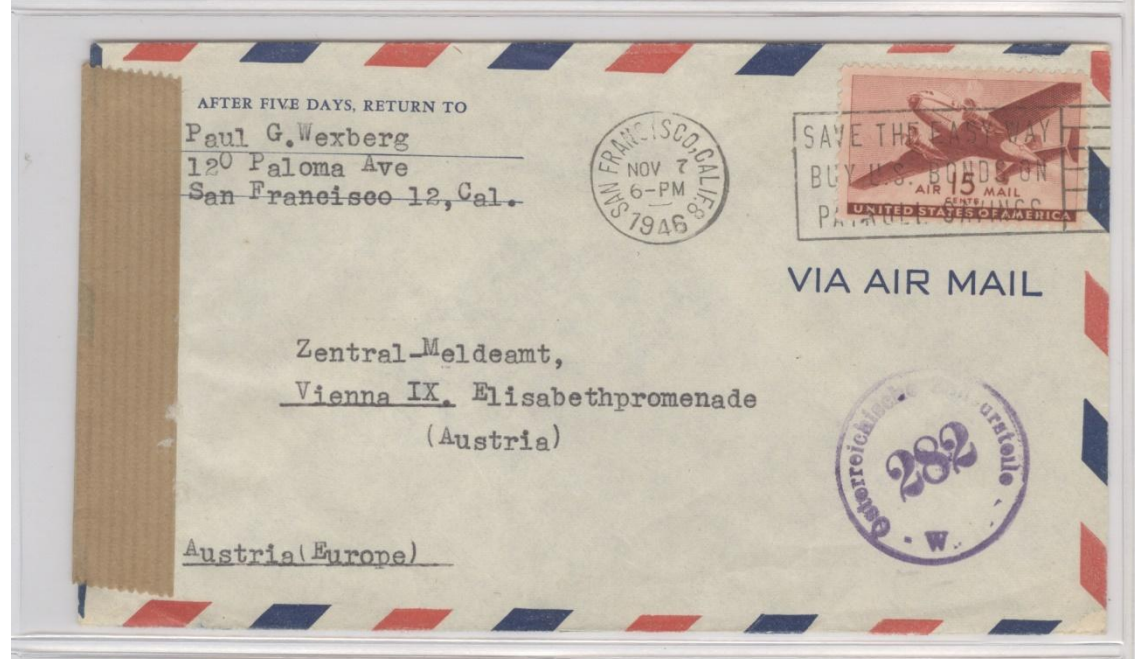
EXAMINED

COME TO
THE VIRGIN ISLANDS

Snyder & Co.
440 Fourth Ave.
New York.

VIA AIR MAIL

VIA AIR MAIL



EXAMINED BY

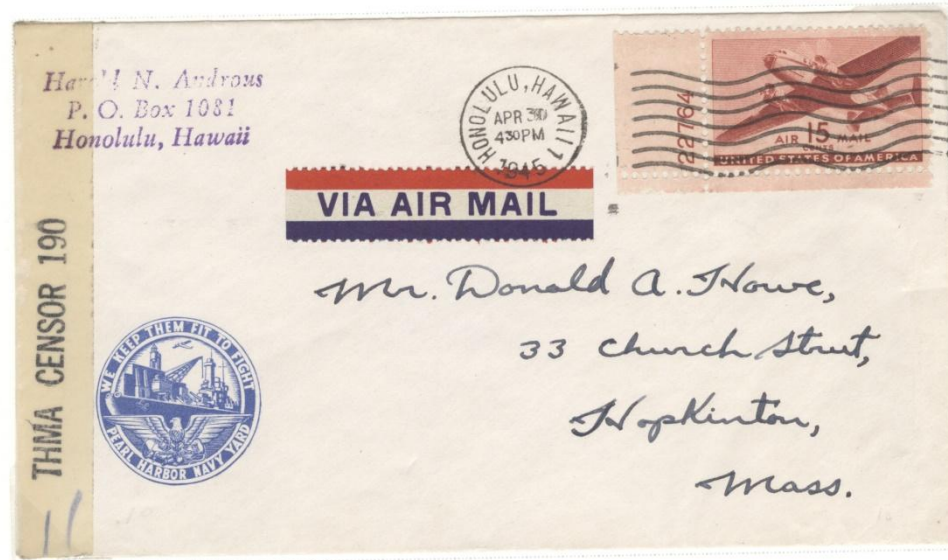
AFTER 5 DAYS, RETURN TO

Mr. L. Scottino
210 E. 65th. New York



VIA AIR MAIL

Mr. A. E. Scottino
Box 1696 Balboa
Canal Zone



US Territory use, Examined by Censor 190, postmarked April 30, 1945 from Honolulu, HI to Hopkinton MA. Plate block single #22764.

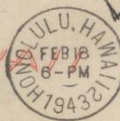
Back of cover with nice Cinderella label pictured below.



EXAMINED



HAWAII



VIA AIR MAIL

DEFENSE SAVINGS BONDS AND STAMPS



Mrs Flo Lynch
636-20th Street
Brooklyn
New York

AFTER FIVE DAYS RETURN TO

Henry Potter
Box 83 Lanikai, Oahu T.H.

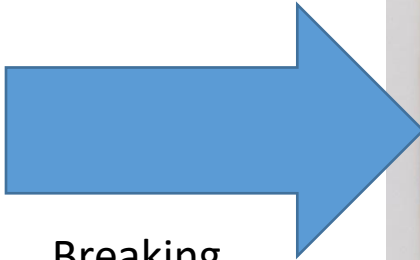


VIA AIR MAIL

Miss Pauline Manning
1010 Monaco Hwy.
Denver, Colorado
U. S. A.

6607

U. S. A.



Breaking
down of
tape.
Age!



This sender/receiver combination is very common and can be easily found on covers that obviously had a lot of paper!



AFTER FIVE DAYS, RETURN TO

J. Bruynes

c/o North American Philips Co. Inc.
Dobbs Ferry, N.Y.



VIA AIR MAIL

Den Hr. F. D. Brinkman
Hendrik de Keizerplein 50
Eindhoven,
The Netherlands.

From
A. Runge & Co.,
18 S. Delaware Ave.,
Philadelphia, Pa.
U.S.A.

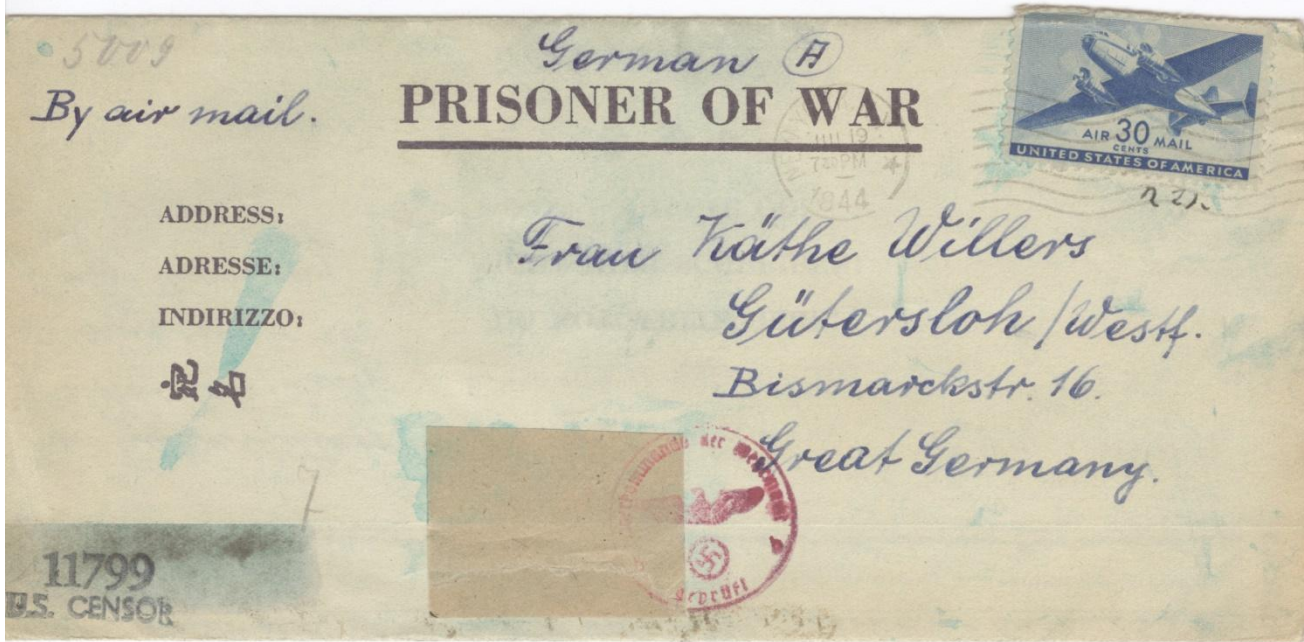
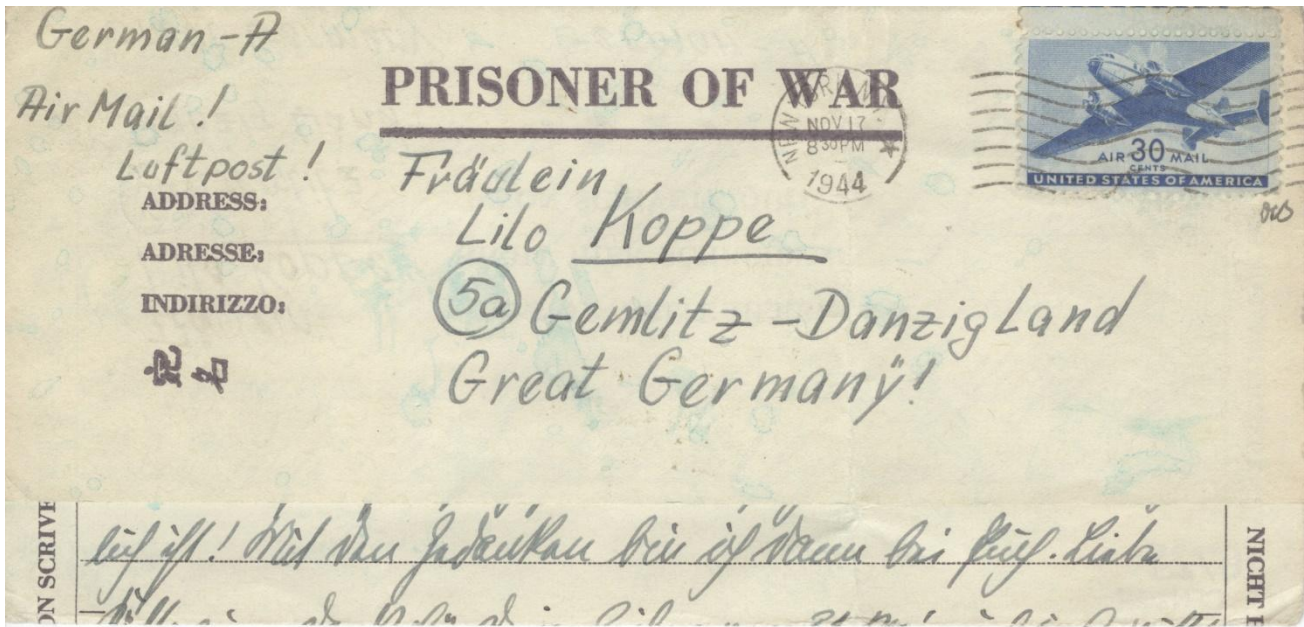


EXAMINED BY

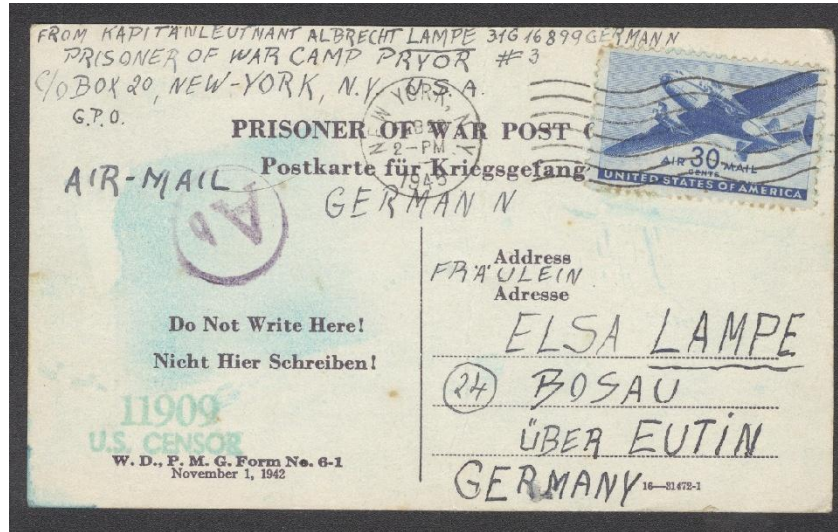


John Chapman, Ltd.,
P. O. Box 2659,
Johannesburg,

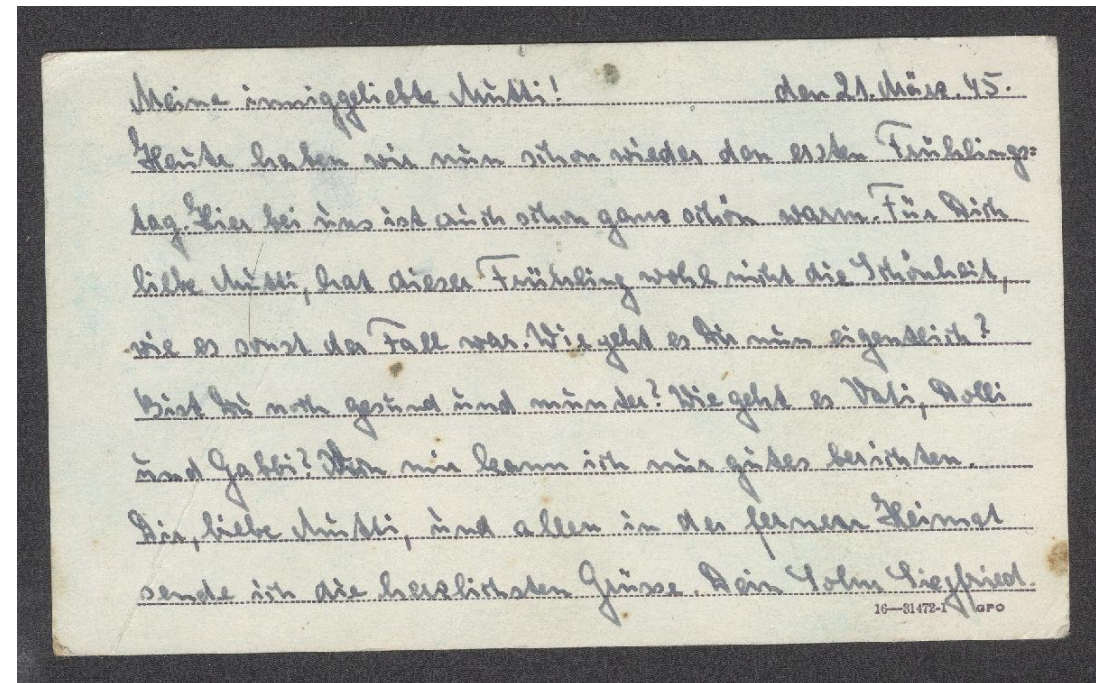
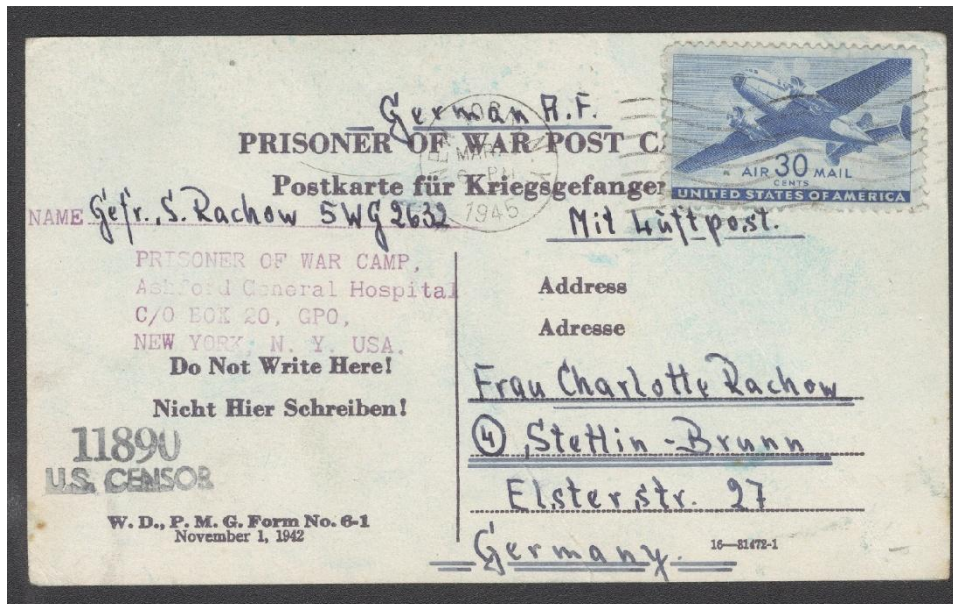
UNION OF SOUTH AFRICA.

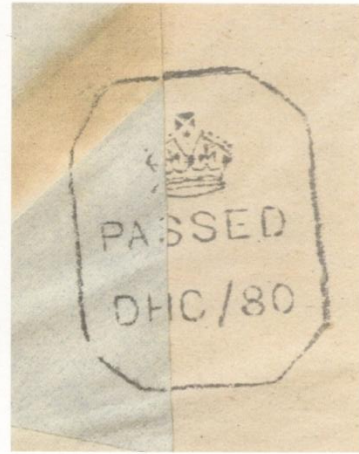


German
and U.S.
Censors
July 1944



Prisoner of War Post Cards.
 Not as common as one would
 expect. Precise writing!





Foreign use, postmarked
April 26, 1944 from

New York City, NY
to
Bombay, India.

Auxiliary mark; INSURANCE

Opened and passed by British
Crown Examiner #8198.

Strange to say the very least.

Sent from Cleveland to Cleveland? Red crayon marks.

With French stamps – Postage Due? No readable date cancel front or back.

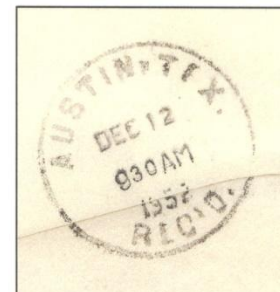
It is just a front of what was a 9 ½ by 11 full size envelope with a clasp.



**Domestic Use
Late Period
VERY TOUGH**



30^c Domestic Cover



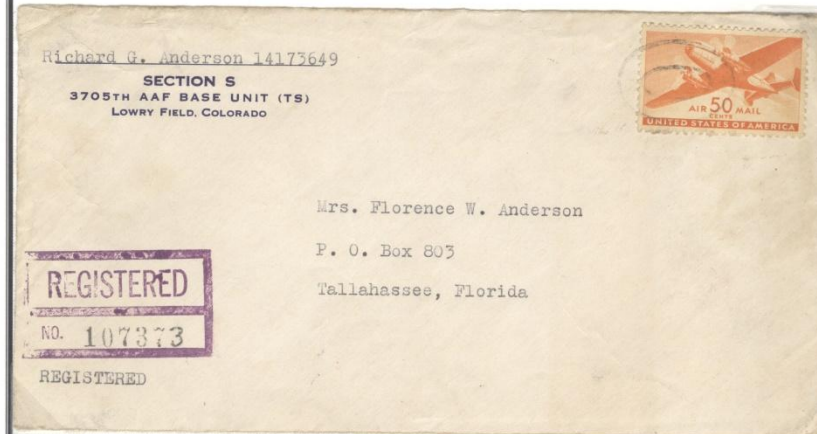
Postmarked
Houston, Texas
December 11, 1952

Auxiliary mark;
Air Mail Special Delivery

Receiving back stamp
Austin, Texas

**Domestic Use, in period 1944
Lowry Field CO to Tallahassee FL
Very RARE
Cover #1**

Transport Series – 50 Cent Cover

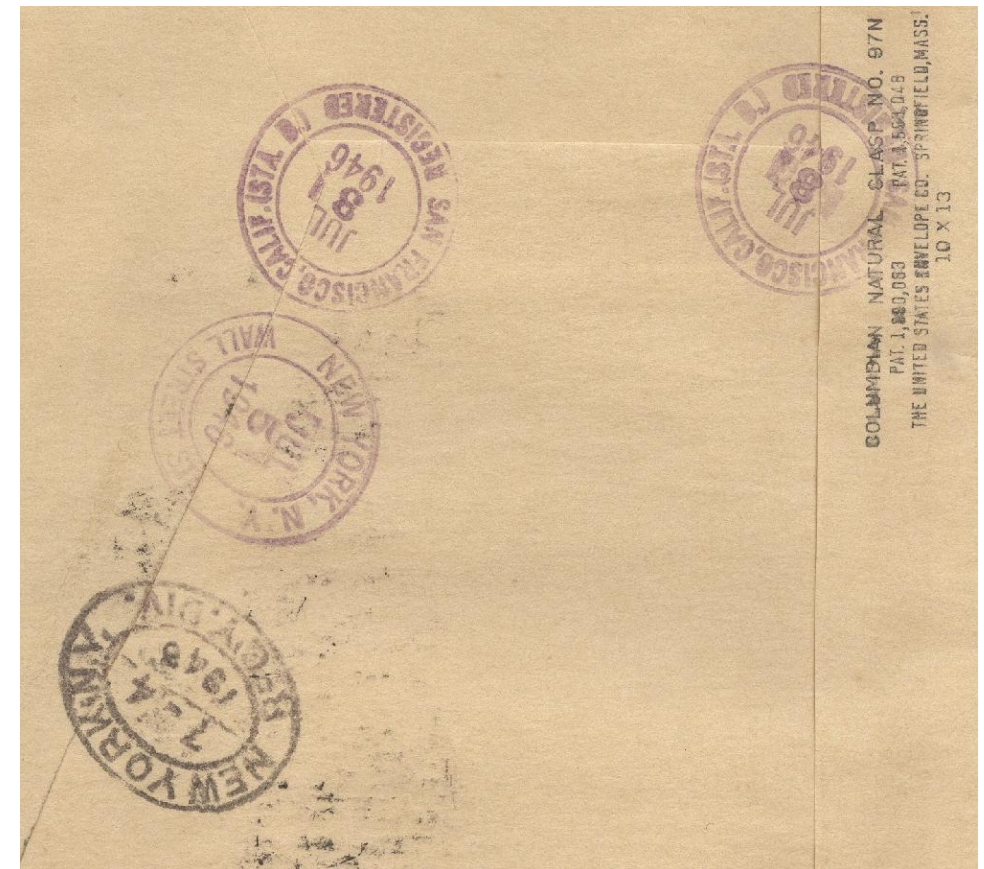


Domestic use, mute postmark on front, back-stamp August 15, 1944
From Lowry Field, CO to Tallahassee, FL.
Auxiliary mark: Registered No. 107373





Domestic Use, in period 1946
San Francisco, CA to NYC, NY
Very RARE
Cover #2



Things that happen. Dealer held this for me and I nearly said no when he quoted the price. Dense. I realized that night while looking at it —what it was!

OFFICE OF THE DEANS
WELLESLEY COLLEGE
WELLESLEY 81, MASSACHUSETTS

BOSTON, MA
JUN 10
10:30 P.M.
1946



Miss Choy Po-yui
99, Lane 1081
Bubbling Well Road
Shanghai, China

*Sarson
719 Rose St
Dubuque Ia*

EXAMINED BY
AIR MAIL
AIR MAIL

Miss Mary Burgess

ENGLAND

RETURNED
TO SENDER
BY CENSOR

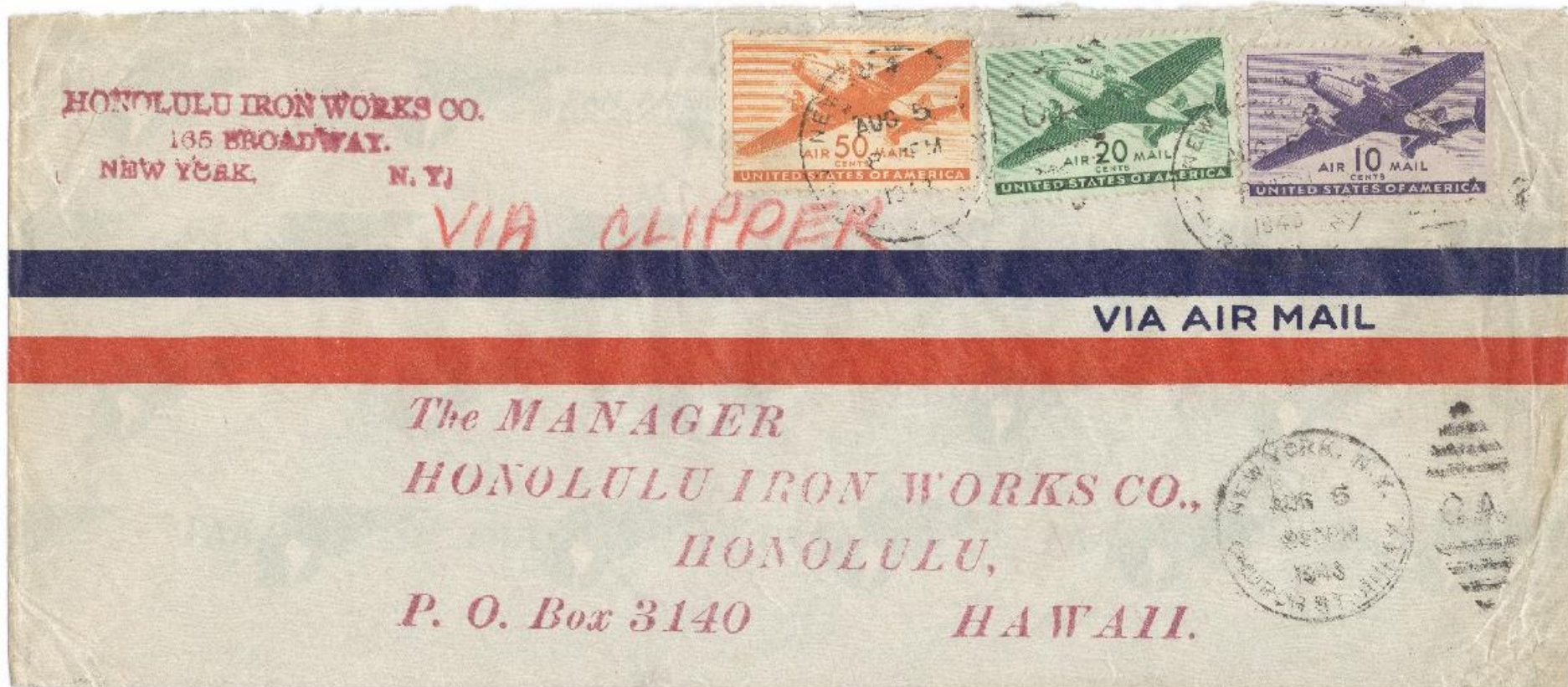
Par Avion
By Air Mail
FORM 297b



DUBUQUE
MAY 21
11 AM
1946
IOWA



A common territorial use from Hawaii to NY
Honolulu Iron Works – Thousands of these covers!



CHARLES SIM
3605 BROADWAY
NEW YORK 31, N.Y.



Mr. Ludwig Rosenbaum
416/57 Tongshan Road
Shanghai, China.

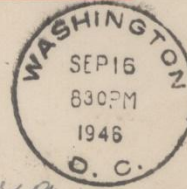
VIA AIR MAIL



VIA AIR MAIL



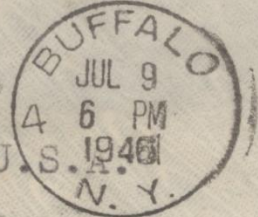
Michel S. Casulli
P. O. Box 1430
Alexandria
Egypt



Irene B. Meyer

83 Hodge Avenue,

Buffalo, 9 N.Y.U.S.A.



VIA AIR MAIL

Mr. D.G. Folts,

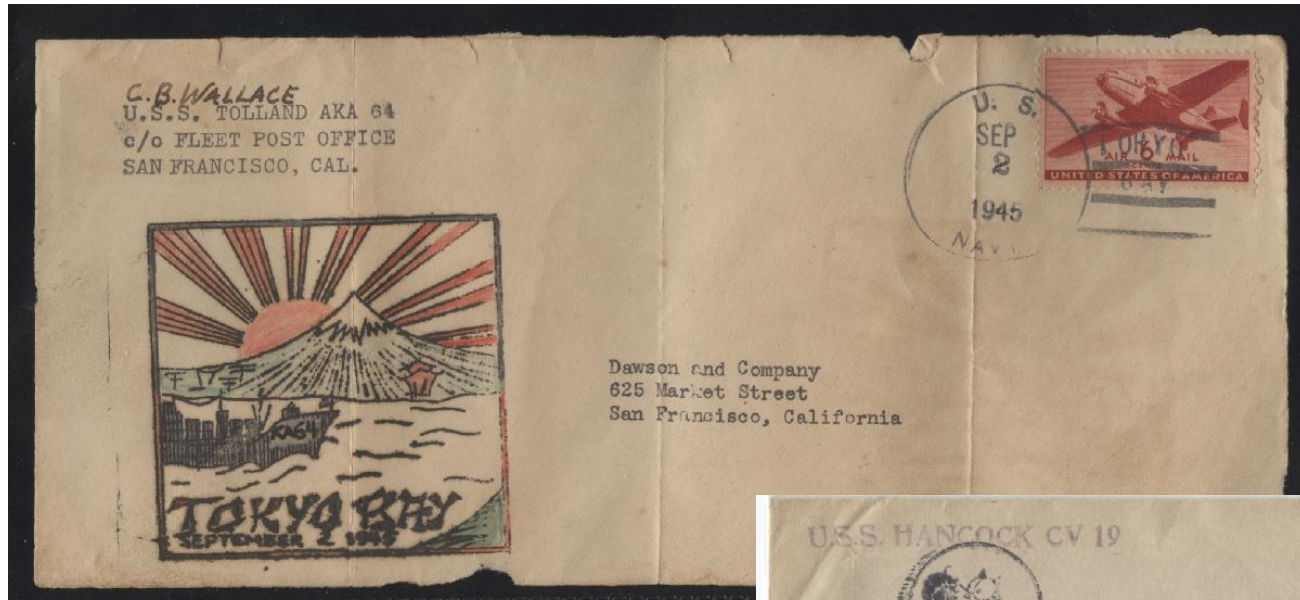
Standard Vacuum Oil Company,

94 Canton Road,

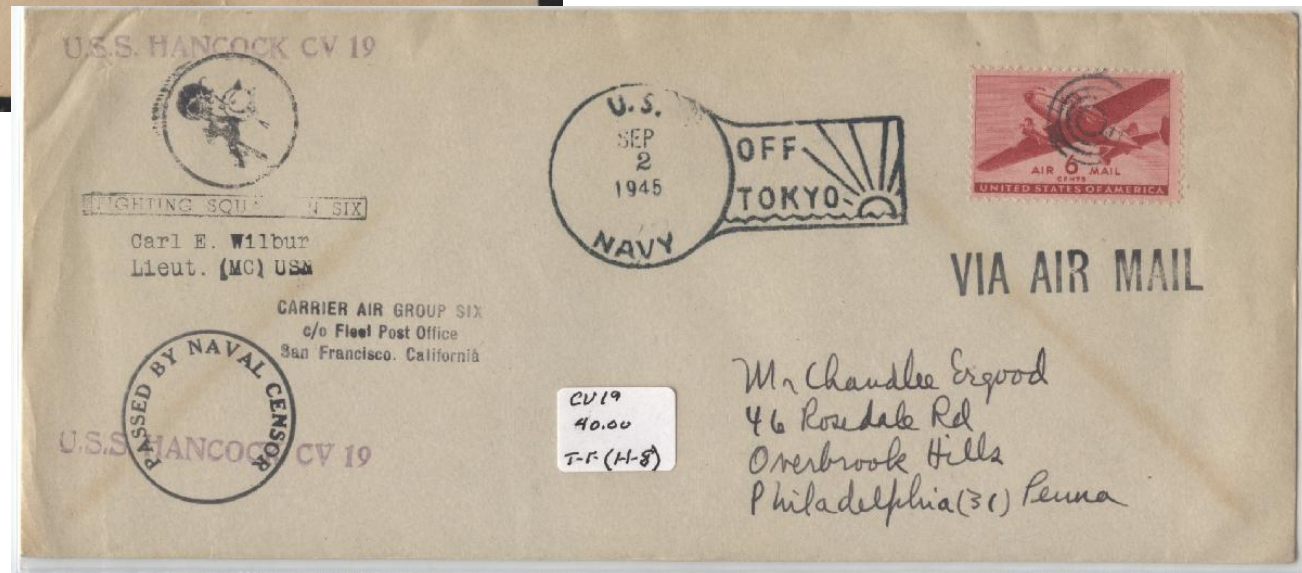
Shanghai, China.



C 31
29



Tokyo Bay Fleet WWII Surrender September 2, 1945





Tokyo Bay Fleet WWII Surrender September 2, 1945

COVER ABOVE HAD A LETTER ENCLOSED.

It reads: Tokyo Bay | 1 September 1945

This souvenir envelope will certainly tell you where our Destroyer is at present. We are waiting for the signing of the Peace Treaty Note also the cancellation of the stamp.

Rumors have it that shortly we'll be heading homeward. I am most anxious to see Washington and my friends again. Perhaps I'll be walking the streets of Tokyo soon. I'd enjoy that.

Received letters from both of you recently.



atson.
Kensington Dr.
San Diego, Calif.

San Diego, Calif.

SAN DIEGO
APR 16
3:30 PM
1945
CALIF.



SAN DIEGO
APR 16
3:30 PM
1945
CALIF.



Via Air Mail
Correo Aereo!

David Matson -
American Community School -
c/o. A. U. B.,
Beirut,

LEBANON

EXAMINED BY

Per Avion

291

International Combo Cover



International use, mute postmark on front, back-stamp August 19, 1947
 Postmarked Los Angeles, CA August 19, 1947 to Mexico D.F.
 Auxiliary mark: Registered No. 394245 & 138973; Return Receipt Requested; Via Air Mail
 Back stamped Los Angeles and receiving Mexico.



International Combo Cover



Postmarked
New York, New York
October 8, 1943
To
Hawick, Scotland

Auxiliary Mark;
VIA AIR MAIL

Errors, Freaks and Oddities

(none are common)

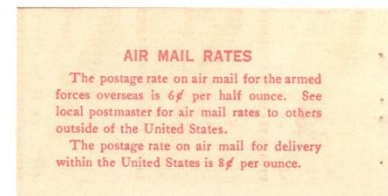
Transport Series – 6 Cent Booklets, EFO



Exploded booklet with partial plate numbers on all four panes. With a production of 948,322 sheets of 180 subjects (60 panes), this is the most common of the plate numbers found.

LL 22979 & LL 22980

Cover & back with inside view.





Fake RF overprints. Sadly, these both fooled a well-known cover dealer.



Transport Series – 6 Cent Booklets
Pane Mis-cuts & Full Booklet; with Plate Numbers



The three panes show substantial amounts of the plate number in the UL position; 22980 (90%), 22981 (50%) & 22982 (60%).

The unexploded booklet has four panes, all showing plate numbers in the LL position; 22982 (50%), 22981 (50%), 22981 (20%) & 22982 (20%).

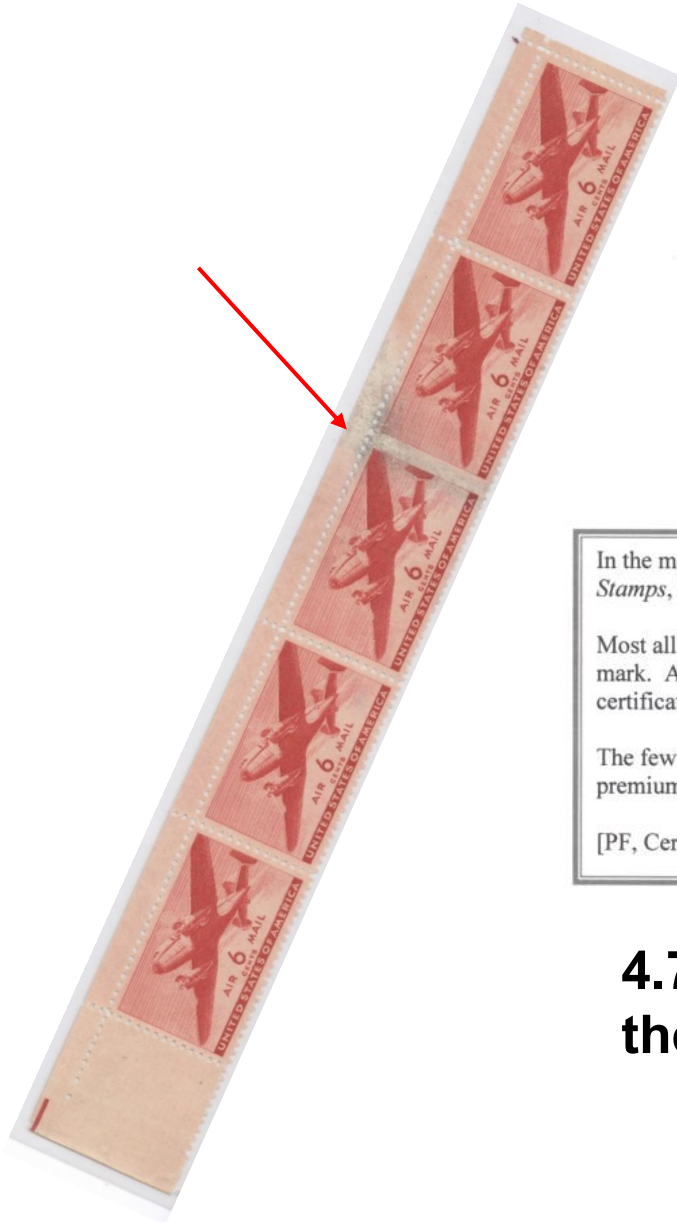
Transport Series – 6 Cent Booklets
Pane Mis-cuts; Major to Minor



Cutting anomalies on individual booklet panes can be found from really very minor to rather spectacular.

The wide range of available material shows, electric eye marks, parts of adjacent stamps, and even margin paper where there should not be any.

Transport Series –EFO material
Imperf Between Pair



In the most recent edition of Stephen R. Datz's, *Errors on U.S. Postage Stamps*, the details are given.

Most all of the known 20 pairs of this error have an inspector's blue crayon mark. Attempts to lighten that crayon mark on this pair are noted on the certificate.

The few known pairs with no trace of a blue crayon, command a healthy premium over the ones with crayon marks.

[PF, Certification September 10, 1973]

4.75 billion printed! Why is there so little EFO material?

Transport Series –EFO material
Tape Splices



Tape splice used in the production process to join rolls of paper to continue the printing process.

These are also a double paper variety from front splice down. While it is common to see red crayon rejection marks on these kinds of pieces, only one out of the three has such markings.



Transport Series –EFO material
Inking Problems



Two blocks show the extremes of over-inking and under-inking that can be found.

With 4.75 billion printed, it is curious why there is not more material to be found.



C25, Fully captured plate number



C28, with a strong solvent spill involving all ten vertical stamps. Extremely rare.

Transport Series – 6 Cent EFO material

With a printing quantity of 4.75 billion, one would think that EFO material would be fairly common. The sad truth is that nearly 70 years since the original introduction, very little EFO material has reached the philatelic world for collectors to enjoy. This upper right margin block of 32 (4x8) shows a dramatic over-inking that could be categorized as moderately severe.



The End!